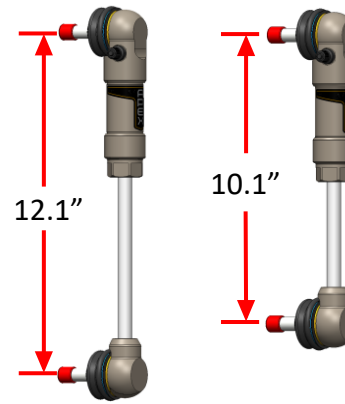




INSTRUCTIONS

airLYNXS Ram 2500 rear



MORE INFORMATION AND VIDEOS

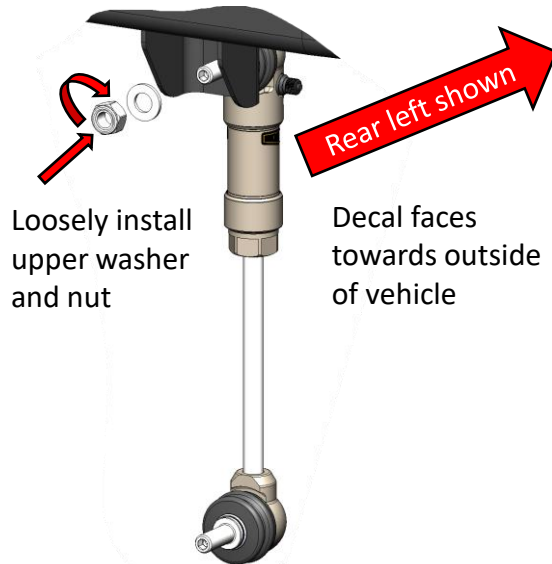


Note: measurements are with top out and bottom out bumpers compressed, your measurement will vary

1

Step 1: Remove factory links on both sides

Install airLYNX links

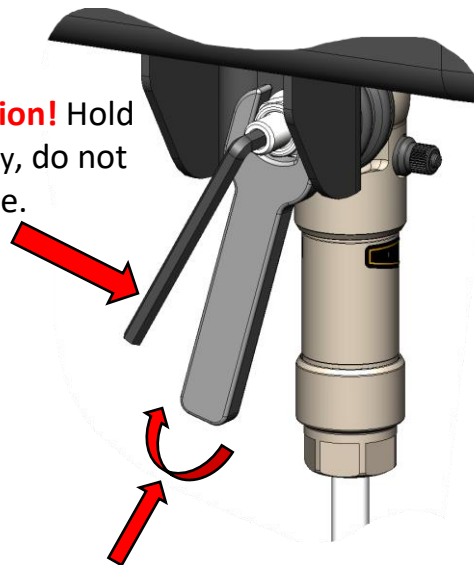


Loosely install upper washer and nut

Decal faces towards outside of vehicle

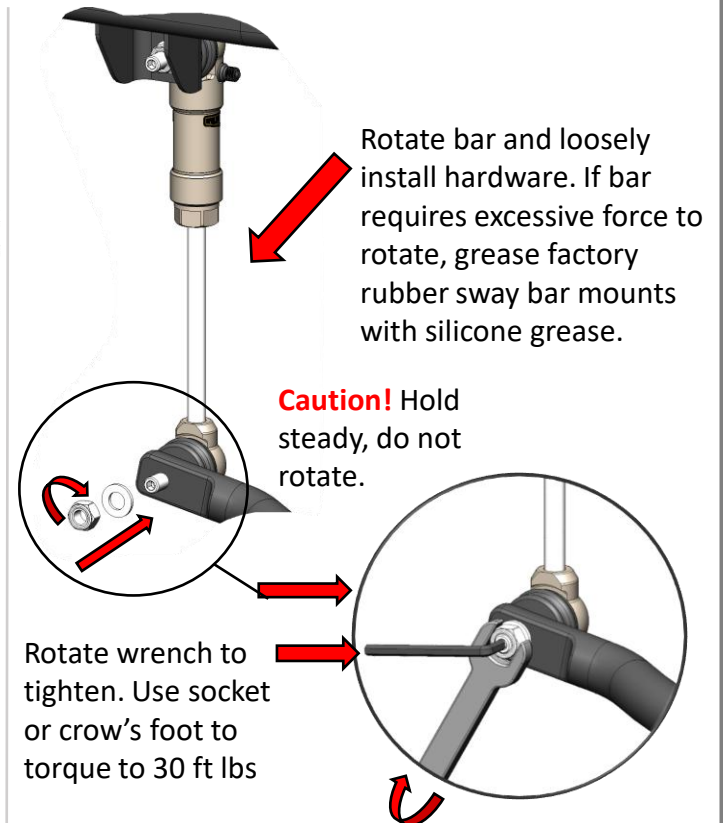
Step 2: Insert links into upper location

Caution! Hold steady, do not rotate.



Rotate wrench to tighten. Use socket or crow's foot to torque to 30 ft lbs

Step 3: Tighten upper hardware



Rotate bar and loosely install hardware. If bar requires excessive force to rotate, grease factory rubber sway bar mounts with silicone grease.

Caution! Hold steady, do not rotate.

Rotate wrench to tighten. Use socket or crow's foot to torque to 30 ft lbs

Step 4: Install lower hardware

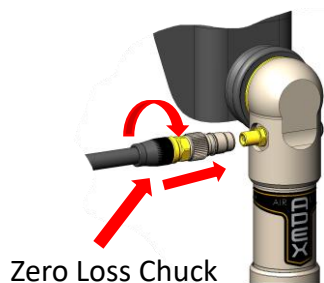
IMPORTANT! The airLynxs must be charged using a **zero loss** chuck. Zero loss chucks allow for the Schrader valve to close before releasing pressure. The airLynxs volume is small, so pressure will leak off when a standard chuck is removed.



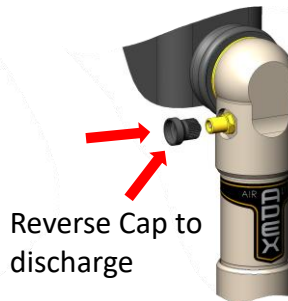
Apex zero loss chuck with hose to 1/4" NPT (Part Number X02-12-008)



Bike shock pump with zero loss chuck (Part Number 027-00-017)



Zero Loss Chuck



Reverse Cap to discharge

Attach Chuck and inflate with pump to desired pressure, reverse cap to discharge:

Street pressure = Minimum of 150 PSI, 300 PSI MAX.

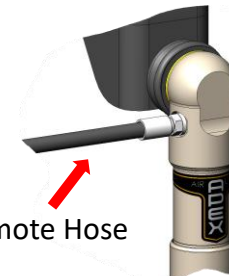
Trail Pressure = 0 PSI and up – Tune to what's comfortable.

Do not use at zero pressure on the street.

IMPORTANT: Charge LYNX every 6 months if it has not been discharged

Step 7: Setting Pressure

Use Optional Apex remote connect kit (X02-09-020) to inflate remotely



Remote Hose



Remote fill port

Optional Kits

Pressure Cannot be Checked After Charging LYNX

The airLYNX is a small volume. When connecting a pump, air volume will be lost causing the pressure to drop. Because of this, **you cannot check the current pressure by reattaching your pump.**

Install Difficulty



Installation time: .5-1 hours

Care and service:

The finish is highly resistant to salt and most chemicals. Avoid strong acids such as mag wheel cleaner.

The link is rebuildable, but it is unlikely that it will be required if it used properly. If there is crash damage and it is worthwhile to rebuild, contact APEX for replacement parts.

By purchasing any item sold by Apex Designs, LLC, the buyer expressly warrants that he/she is in compliance with all applicable, State, and Local laws and regulations regarding the purchase, ownership, and use of the item. It shall be the consumers responsibility to comply with all Federal, State and Local laws governing the sales of any items listed, illustrated or sold. The buyer expressly agrees to indemnify and hold harmless Apex Designs, LLC for all claims resulting directly or indirectly from the purchase, ownership, or use of the items.