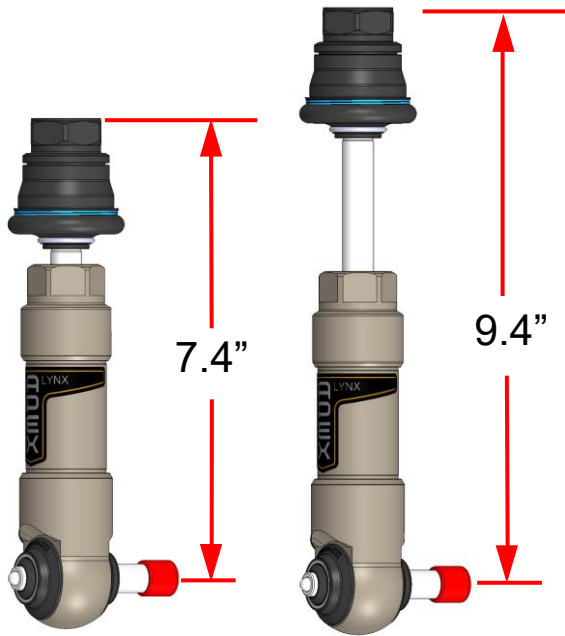




INSTRUCTIONS

airLYNX for Tacoma, 4Runner, GX, FJ



MORE INFORMATION AND VIDEOS



Pressure Cannot be Checked After Charging LYNX
The airLYNX is a small volume. When connecting a pump, air volume will be lost causing the pressure to drop. Because of this, **you cannot check the current pressure by reattaching your pump.**

Note: Your measurements may vary as the bottom and top out bumpers can compress under load.

Install Difficulty



Installation time: 2-3 hours

Care and service:

The finish is highly resistant to salt and most chemicals. Avoid strong acids such as mag wheel cleaner. The link is rebuildable, but it is unlikely that it will be required if it used properly. If there is crash damage and it is worthwhile to rebuild, contact APEX for replacement parts.

By purchasing any item sold by Apex Designs, LLC, the buyer expressly warrants that he/she is in compliance with all applicable, State, and Local laws and regulations regarding the purchase, ownership, and use of the item. It shall be the consumers responsibility to comply with all Federal, State and Local laws governing the sales of any items listed, illustrated or sold. The buyer expressly agrees to indemnify and hold harmless Apex Designs, LLC for all claims resulting directly or indirectly from the purchase, ownership, or use of the items.

INCLUDED HARDWARE



Torque Specifications:

6mm screws 10Nm/7 ft lbs

8mm screws 25Nm/18 ft lbs

12mm bolts 100Nm/75 ft lbs
(sway bar mount)

It is required that the sway bar be relocated forward at least .6"

Relocating the bar forward is a common practice to gain clearance for larger coil overs springs

If you have already moved your sway bar forward using a typical bracket (as needed for larger coil overs) as shown, you may proceed without using the supplied relocation kit.

Typical style



If you have NOT moved your sway bar forward you must use the supplied relocation kit or purchase another type that moves it forward at least .6".

This style relocation keeps the bar at factory height and so eliminates any interference issues with skid guards.

APEX style, included



1

Link removal (both sides)

Safely support vehicle on jack stands and remove wheels. Chalk rear wheels.

Discard factory links.

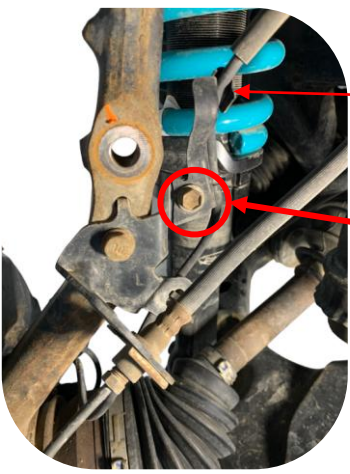


Hold steady center of stud
2X 6MM HEX KEY

Remove nut
2X 17MM WRENCH

2

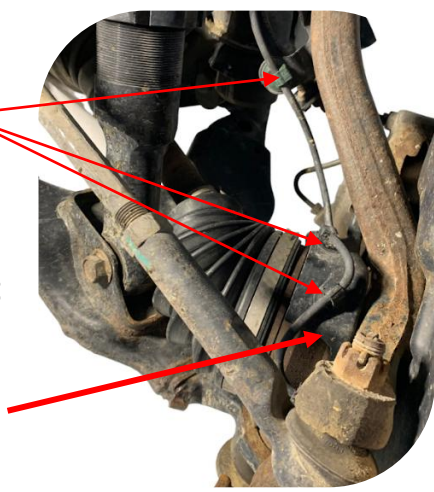
**Remove ABS sensor brackets
Drivers side shown, passenger similar**



Undo ABS line from clips

Remove screw and associated bracket

Remove screw and associated bracket



**Parts removed
May differ from model to model**

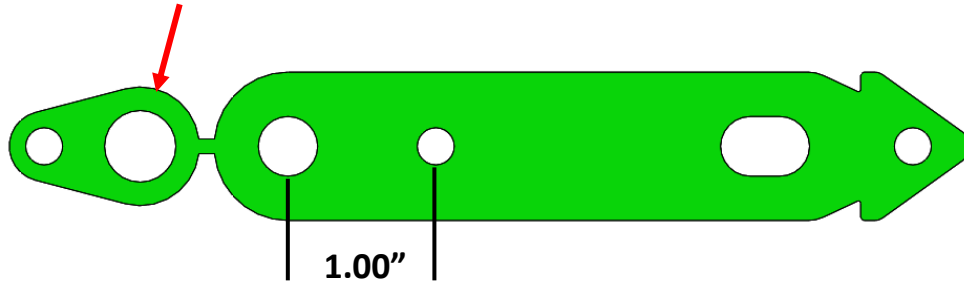


Sway Bar relocation kit install

If using another type of sway bar relocation omit this page

3

Break off this tab from drill guide and discard



Kit relocates sway bar
1.00" forward

- a) Safely support vehicle on jack stands and remove wheels. Chock rear wheels.
- b) Remove sway bar from vehicle

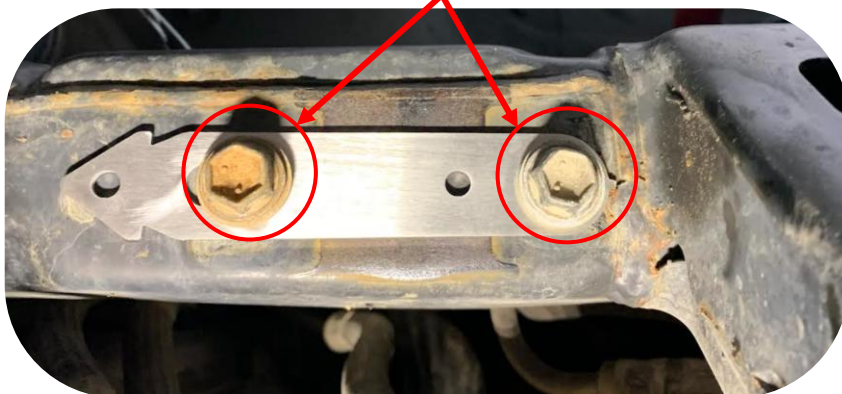
4

Drill guide install onto sway bar mount

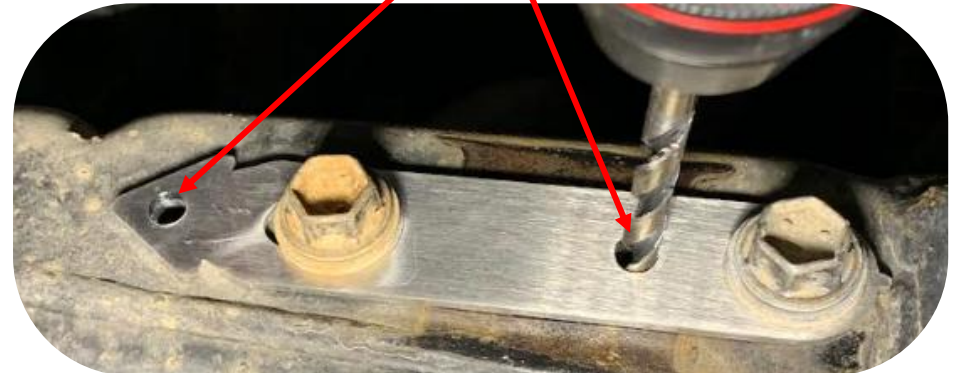
front



Use 14mm Factory bolts to mount drill guide (both sides)
(Drives side shown)



Drill through .250" 2X each side



Sway Bar relocation kit install

If using another type of sway bar relocation omit this page

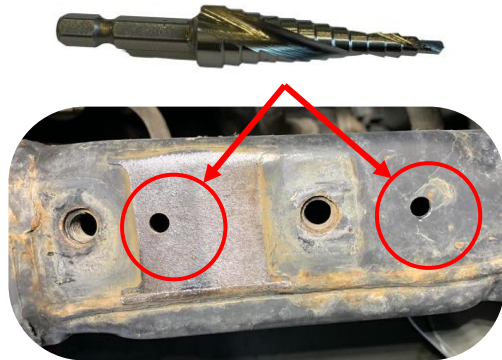
5

Recommended step drill

APEX part number T06-01-002, Max 13mm

(Sold separately)

Drill through 4X 13mm



Notes:

A ½ drill is very close to 13mm but may need a little more effort to install nut into hole. Make sure nut is pushed tight to surface while installing or it may not clamp correctly. An extra rivet nut is included in case there is a learning curve.

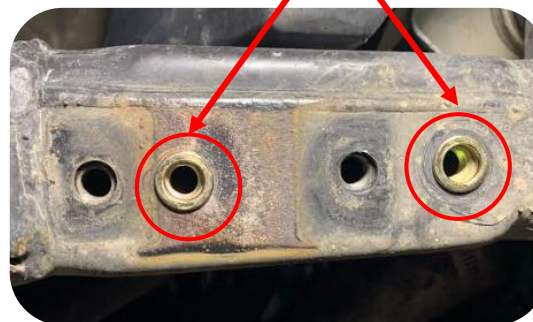
Recommended rivet nut tool

M10 X 1.5 Thread

Other styles for rivet nut install tools may be used as well



Install rivet nuts 4X



Reinstall sway bar and links.

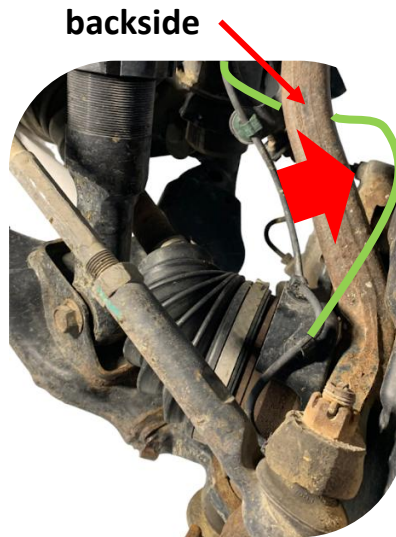
**Reroute ABS line
Drivers side shown**

**Unlock ABS sensor plug
using flat blade screwdriver**



**(Optional) Remove bolt and sensor
if clip is difficult to remove**

**Move ABS line
Behind spindle**



Lower ABS bracket mount



**Zip tie
mount**

**Use factory screw to new
fasten ABS mount**



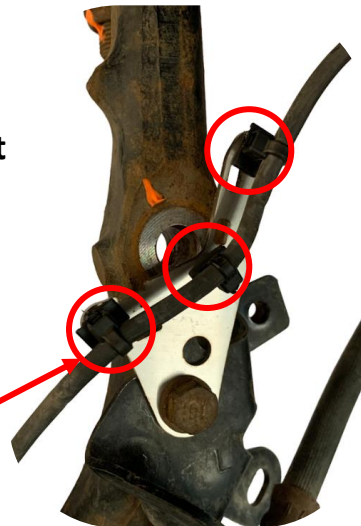
**Use supplied zip
Ties. Mount as
Shown. Leave
some slack**



Upper ABS bracket mount (above axle shaft)



**Use factory
screw to Fasten
new ABS mount**



**Use supplied zip ties
Mount as shown
Leave some slack**

Check!

**Make sure ABS line does not rub wheel
or other parts. Turn lock to lock to check
for rubbing a limits.**

**Normal zip ties may be used on grooves
should a replacement be needed**



Remove ball joint nut

Check upper ball joint stud length! (factory styles will be ok) There are a few aftermarket stud that are long as shown below

0.900" Max!



Remove nut

Factory stud is M14 x 1.5 pitch

Trim length if required



If uniball is used the thread must be M14 X 1.5. USE ONLY GRADE 10.9 min.! BOLT MUST NOT EXTEND MORE THAN .900" FROM BOTTOM OF SPINDLE SURFACE.

Most Icon ball joints are 2.0 pitch.

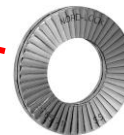
Install sway bar

Reinstall sway bar to frame using supplied relocation kit to new rivet nut location (deferent thread pitch than stock) or other type.

Install airLYNX



a) Slide lower link stud into sway bar mounting hole



b) Screw ball joint onto stud with supplied nordlock lock washer first

c) Tighten 19mm nut to 30 ft lbs with washer between nut and sway bar. Hold stud steady with 6mm allen key.

Torque airLYNX

The airLYNXs are side specific. The Schrader valve should be facing the front of the vehicle.

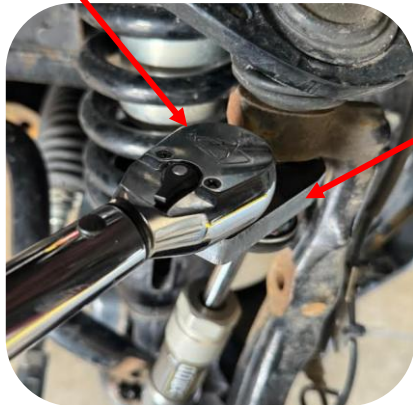


Schrader valve faces front of vehicle on both sides.

Torque airLYNX

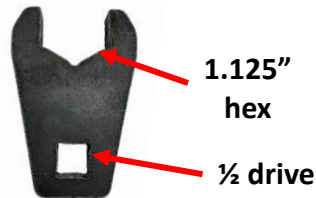
INSTALL AIRLYNX ON BOTH SIDES OF VEHICLE

Torque wrench



Turn steering to full lock left for drivers and right for passenger

Torque to **70 ft lbs** using supplied crows foot. **MUST USE TORQUE WRENCH**



Tighten all hardware on the links and the anti-sway bar frame brackets.



WARNING: DO NOT TIGHTEN AIRLYNX WITH AN IMPACT GUN. POWER TOOLS WILL CAUSE DAMAGE TO THE BOOT BY TWISTING IT AND POSSIBLE DAMAGE THE JOINT. HAND TOOLS ONLY.

Charge both links using a bike **SHOCK** pump with a zero loss chuck. **IMPORTANT!** Zero loss chucks allow for the Schrader valve to close before releasing pressure. The airLYNX volume is small, so pressure will leak off when a standard chuck is removed.

PART# 027-00-017
Other brands may be used as well.



Use bike **shock** pump with zero loss chuck



Street pressure = Minimum of 150 PSI, 300 PSI MAX.
Trail Pressure = 0 PSI and up – Tune to what is comfortable.
Do not use at zero pressure on the street.

IMPORTANT: Charge LYNX every 6 months if it has not been discharged