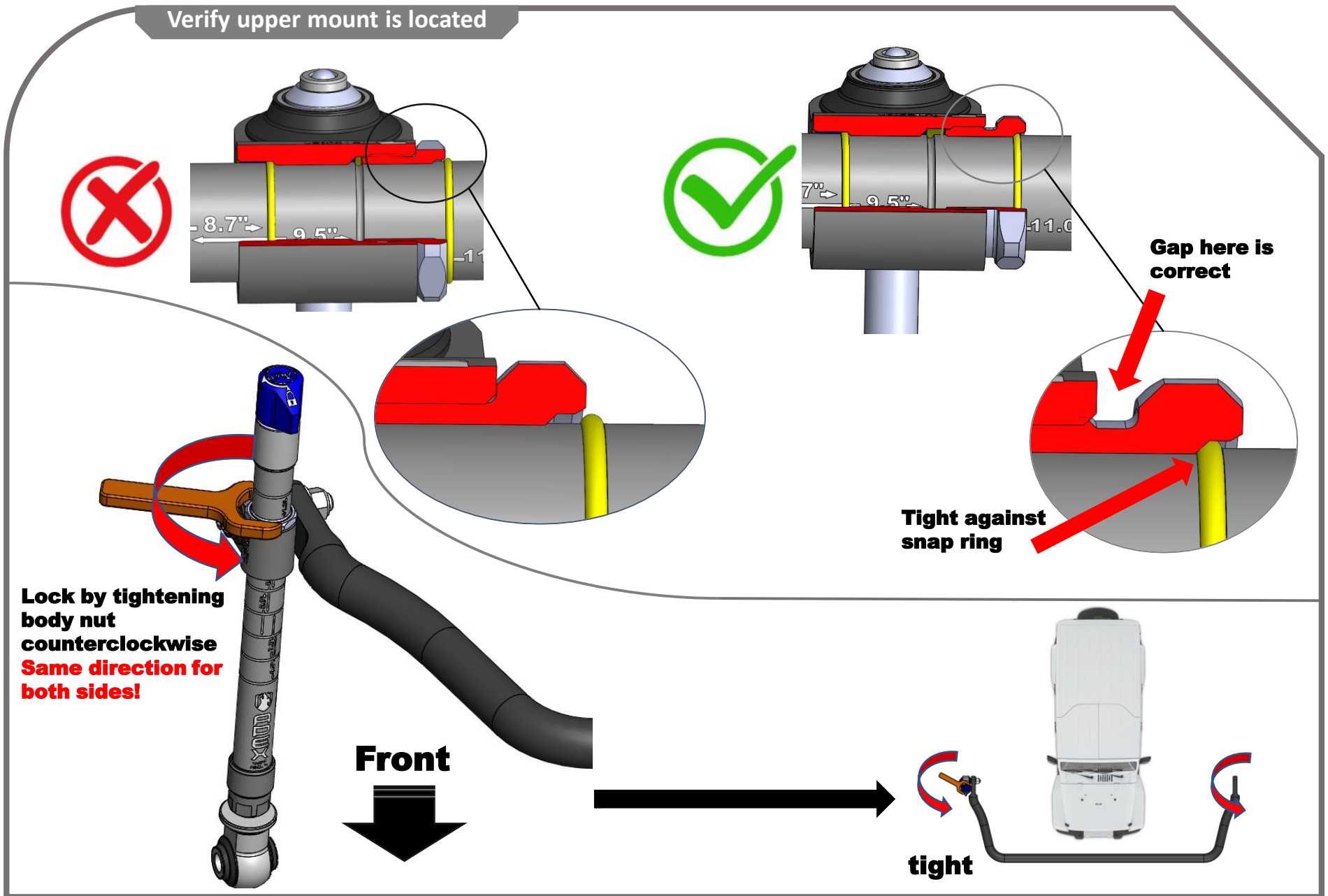


# Troubleshooting install issues:

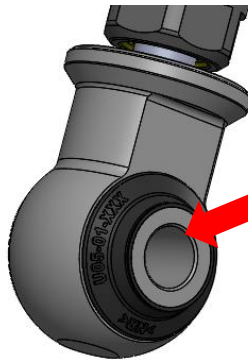
**Rattles or noise while going over bumps.**  
**Body rotates while locking or unlocking.**



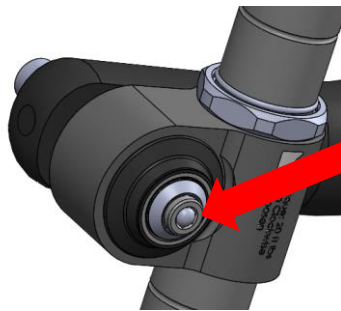
# Troubleshooting install issues:

**Rattles or noise while going over bumps.**

## Step 1



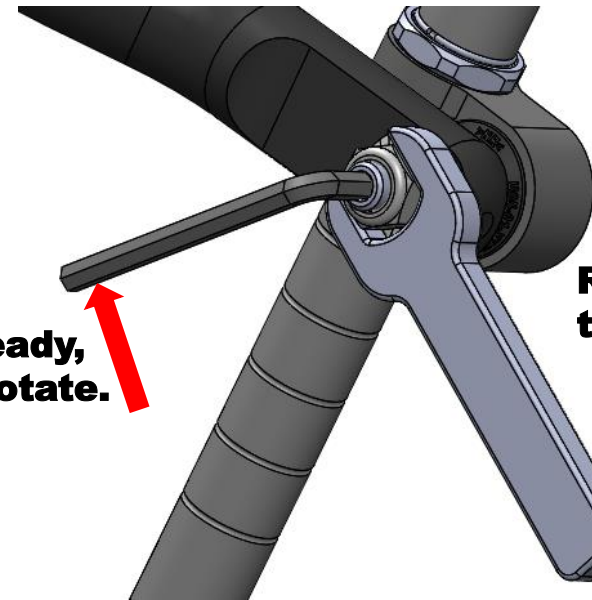
**Tighten bolt that goes here 60 ft lbs.**



**DO NOT REMOVE this plastic tamper proof ball !!**

**Doing so will void the warranty. The hex to tighten the nut is on the other side.**

## Step 2



**Hold steady, do not rotate.**

**Rotate wrench to tighten.**

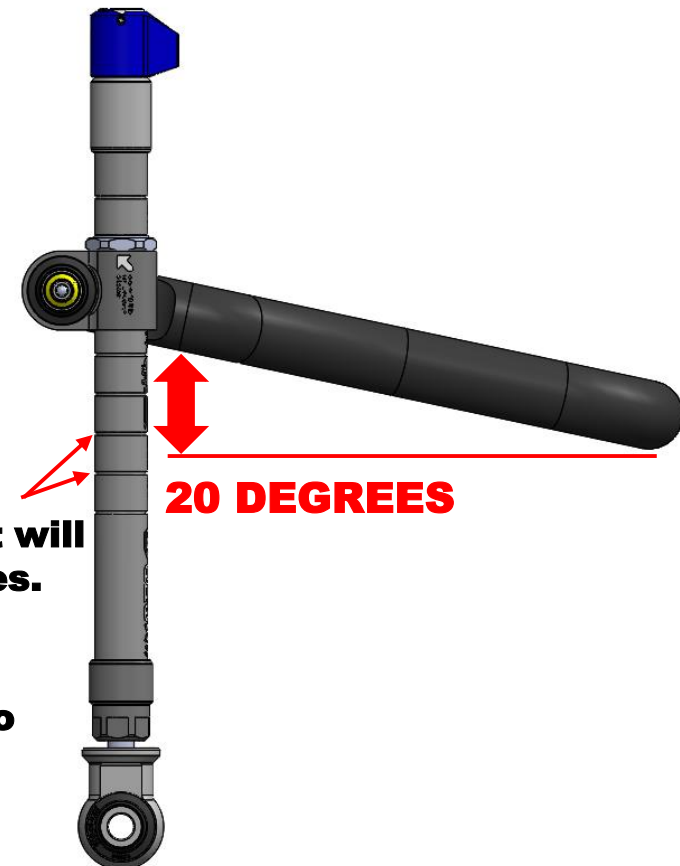
**Use socket or crows' foot to torque to 30 ft lbs.**

## Stock height to 1.5" lift. Right/Left alignment if needed. All Models

Stock jeeps have a lot of variation from model to model and **no lift to small lifts** allow the top of the link to move more with this variation.

Sometimes the axle is not centered on the jeep. This may cause tilting of the link. The link is capable of being tilted with no harm. If it is causing interference or you just don't like it check the following.

- 1) Loosen the sway bar mount and slide bar right or left to best suit you application.
- 2) If your jeeps axle is not centered you can use washers on the upper mount to accommodate. See page 5 for details.

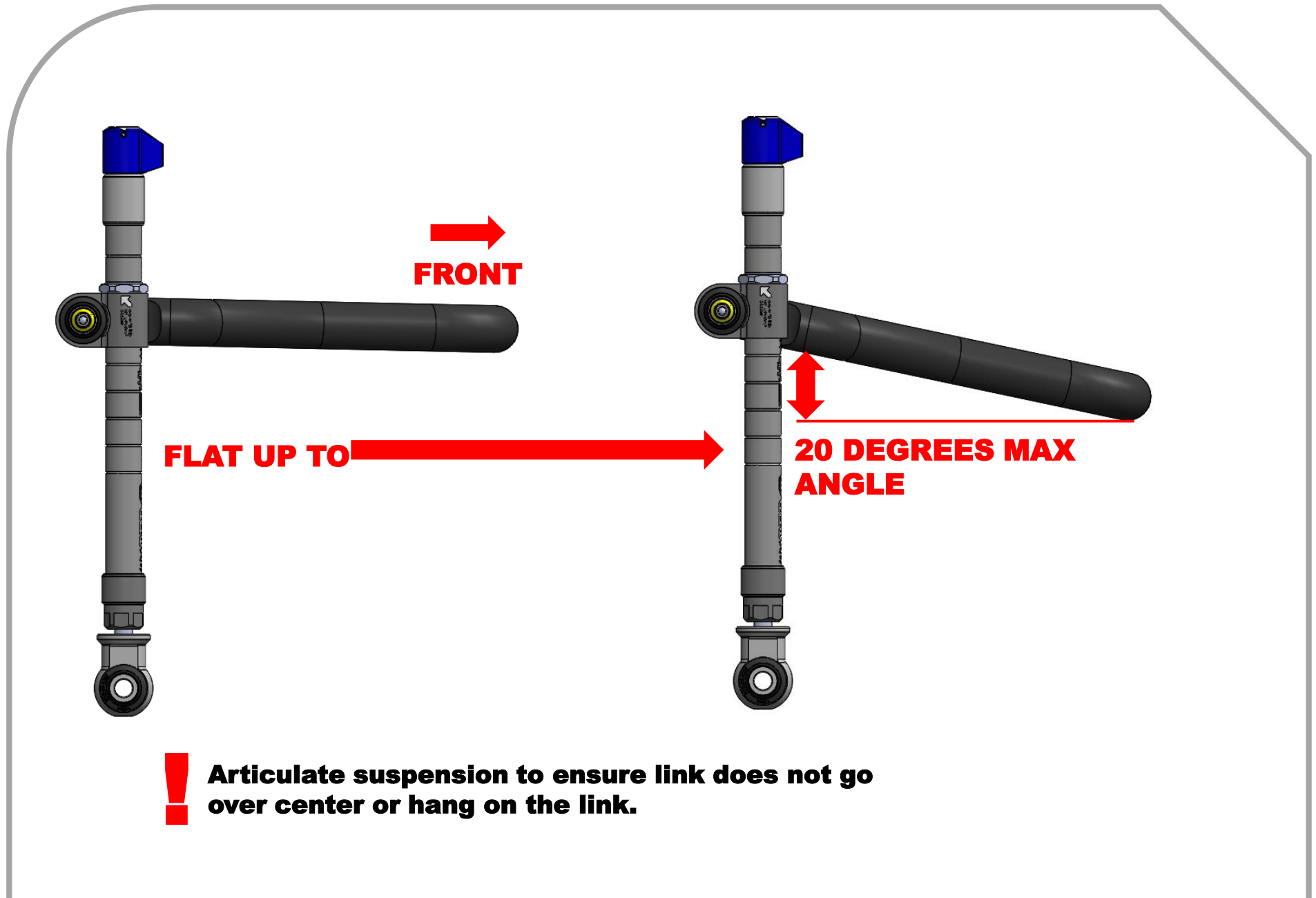


Select one of these that will get closest to 20 degrees.  
Models vary

It is better to have the sway bar angled up than to match the stock length sway bar link

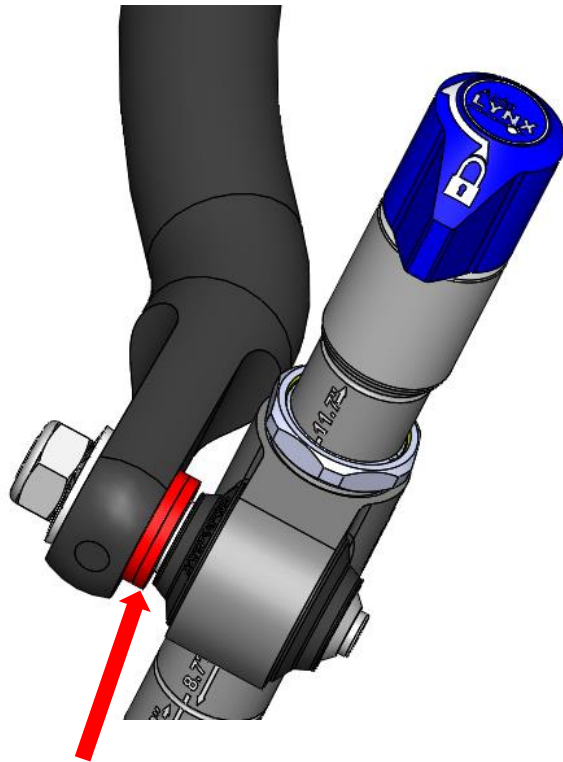
# Anti-Sway Bar Angle

Mounting reference if no links are provided from your lift kit

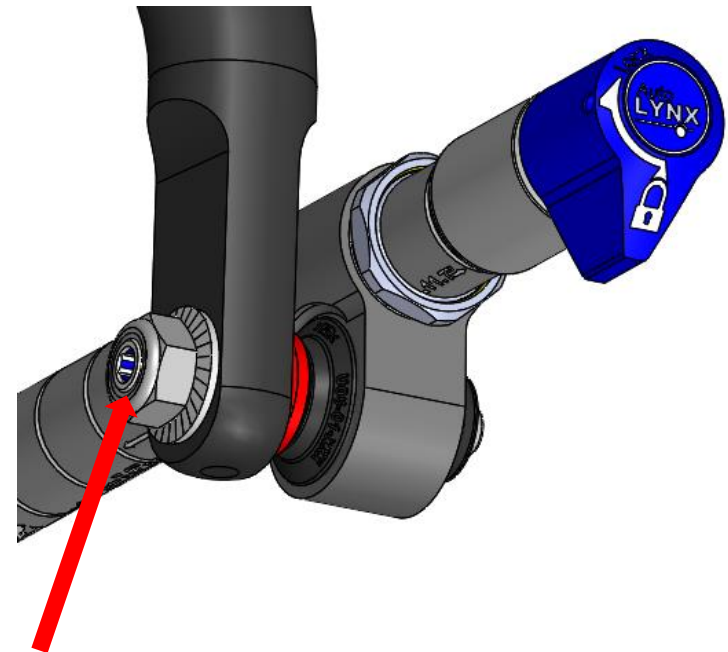


**Stock height to 1.5" lift. Right/Left alignment if needed.  
All Models**

**The autoLYNX comes with an extra long mounting stud to allow alignment with washers**



**Add washers to align link.  
Use washers that fit tightly  
to threaded pin. Max hole ID  
.530". This is a standard 1/2" washer.**



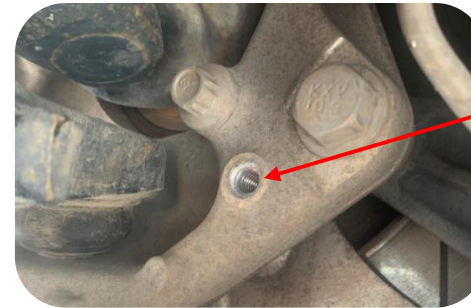
**Ensure that nut does not  
extend beyond threads. !**

# JL/JT STEERING STOP ADJUSTMENT. JK similar

**Mounting reference if no links are provided from your lift kit**

1

Remove steering stop bolt. Located rearward of axle. 15mm socket, passenger side shown. When adjusting for the right wheel the stop will be on the left side.



Bolt removed as shown



Use common washers to space out steering stop bolt. Use .415' ID washer, this is a common size. Must be a tight fit.

2

Place washer as shown and tighten. Use as many washers as need to prevent the tire rubbing on the AutoLynx. Do not exceed .300" so there is enough thread engagement. Use loctite blue or red to prevent unthreading.



Optional:  
Use a bolt with a M10 X 1.5mm thread and a length of 35-40mm long. Use nut as jam nut. Use loctite blue or red to prevent unthreading. This arrangement is easier to fine tune adjustment.

