



Part Number: **TAD106**
Product **FRONTIER SERIES POLYMER FUEL TANK 178L**
Description:
Suited to **VDJ79R TOYOTA LANDCRUISER 79 SERIES DUAL**
vehicle/s: **CAB CHASSIS, 2012 on. SINGLE CAB 11/2016 on.**

WARNING

NOTE THE FOLLOWING:

- ◆ This product must be installed exactly as per these instructions using only the hardware supplied.
- ◆ In the event of damage to any component, contact your nearest authorised ARB stockist. Repairs or modifications must not be attempted.
- ◆ Do not use this product for any vehicle make or model, other than those specified by ARB.
- ◆ This product is designed to carry diesel fuel only and is not suitable for use in petrol applications.
- ◆ Do not remove labels from this product.
- ◆ When working with fuel, ensure correct work practices and suitable PPE is employed.
- ◆ Contain any spills and dispose of correctly.
- ◆ This product or its fixing must not be modified in any way.
- ◆ The fuel gauge and distance to empty indicator may vary from factory condition.
- ◆ The installation of this product may require the use of specialized tools and/or techniques
- ◆ It is recommended that this product is only installed by trained personnel
- ◆ State regulations vary, please check with your local authorities regarding documentation of this installation.
- ◆ Biodiesel fuels do not conform to a mandatory code of practice regarding the chemical make-up of the fuel, therefore use of biodiesel is not recommended in this tank.
- ◆ These instructions are correct as at the publication date. ARB Corporation Ltd. cannot be held responsible for the impact of any changes subsequently made by the vehicle manufacturer
- ◆ During installation, it is the duty of the installer to check correct operation/clearances of all components
- ◆ Work safely at all times
- ◆ Unless otherwise instructed, tighten fasteners to specified torque

ARB 4x4 ACCESSORIES

Corporate Head Office

42-44 Garden St
Kilsyth, Victoria
AUSTRALIA 3137

Tel: +61 (3) 9761 6622
Fax: +61 (3) 9761 6807

Australian enquiries
North & South American enquiries
Other international enquiries

sales@arb.com.au
sales@arbusa.com
exports@arb.com.au

www.arb.com.au

GENERAL CARE AND MAINTENANCE

By choosing a Frontier Series fuel tank, you have bought a product that is one of the most sought after 4WD products in the world. Your fuel tank is manufactured from a High Density Poly Ethylene (HDPE) product that has superior cross linking qualities. This cross linking polymer provides high impact resistance, high strength and rigidity and will not be effected by harsh chemicals and minerals. It is engineered to be a reliable high quality accessory that represents excellent value. To keep your fuel tank in original condition it is important to care and maintain it following these recommendations:



- It is recommended that following exposure to salt and or other contaminants, the fuel tank mounting straps, and fuel sender mounting area be thoroughly rinsed to prevent corrosion.
- As part of any Pre Trip Preparation, or on an annual basis, it is recommended that a thorough visual inspection of the vehicle is carried out, making sure that all bolts and other components are torqued to the correct specification. Also check that all wiring sheaths, fuel line connectors, and fittings are free of damage. Replace any components as necessary. This service can be performed by your local authorized ARB Stockist.

FITTING REQUIREMENTS

REQUIRED TOOLS FOR FITMENT OF PRODUCT:

BASIC TOOLS KIT	HOSE CUTTERS
VEHICLE HOIST OR HYDRAULIC JACK AND STANDS	LIFTING EQUIPMENT SUITABLE FOR SUPPORTING FUEL TANKS
FUEL SENDER REMOVAL TOOLS	FUEL TRANSFER EQUIPMENT

HAVE AVAILABLE THESE SAFETY ITEMS WHEN FITTING PRODUCT:

Protective eyewear		Hearing protection	
--------------------	---	--------------------	---

NOTE: 'WARNING' notes in the fitting procedure relate to OHS situations, where to avoid a potentially hazardous situation it is suggested that protective safety gear be worn or a safe work procedure be employed. If these notes and warnings are not heeded, injury may result.

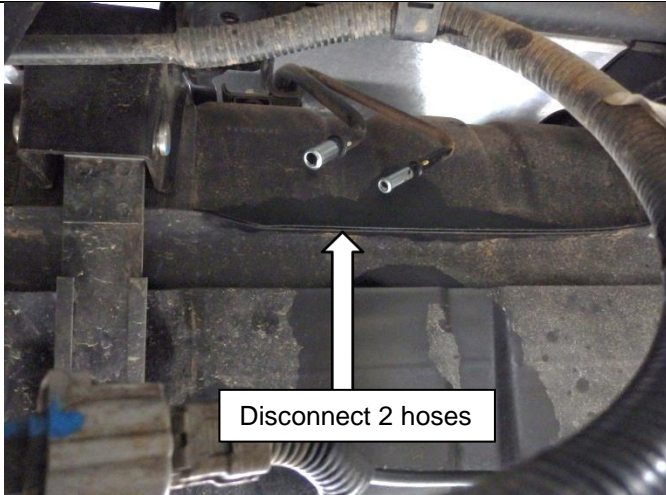
FASTENER TORQUE SETTINGS:

SIZE	Torque Nm	Torque lbft
M6	9Nm	7lbft
M8	22Nm	16lbft
M10	44Nm	32lbft
M12	77Nm	57lbft

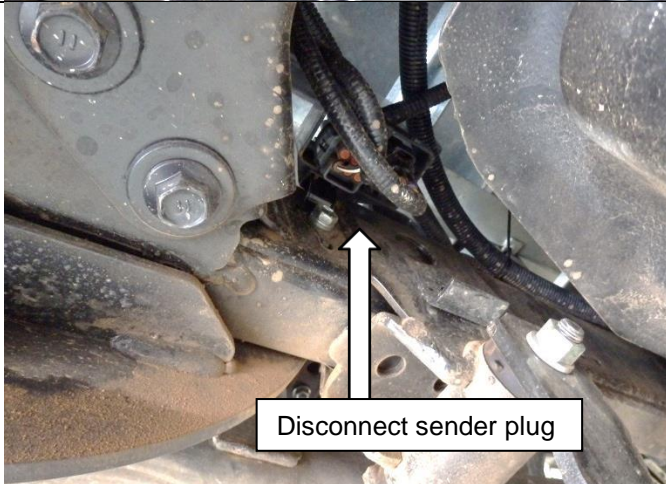
PARTS LISTING-TAD106BK

APPLICATION.	PART NO.	QTY	DESCRIPTION
FRONTIER SERIES FUEL TANK INSTALLATION	TAD106	1	POLYMER FUEL TANK
	BP80153	2	LC76/LC79 STRAP
	BP80155	1m	STRAP RUBBER 63MM
	BP80155	1m	STRAP RUBBER 63MM
	BP80059	0.5m	5/16' FUEL HOSE
	BP80060	0.5m	12MM FUEL HOSE
	BP80053	2	#10 HOSE CLAMPS SUIT 12MM HOSE 3508A
	BP80055	2	#4 HOSE CLAMP SUIT 1/4' HOSE
	BP80176	2	INSULATOR RUBBER 70X660MM
	BP80068	1	FLOAT ARM WIRE
	BP80282	1	CIRCLIPS PUSH ON 2.0MM
	BP80319	1	WIRE FLOAT ARM LC70 11/16 on
	BP80160	1	GAUGE CAUTION STICKER
	BP80094	5	M5 X 12 SEMS PAN HEAD (IN BAG)
	3789439	1	INSTRUCTIONS
	BP80224	1	STICKER BUMPER ARB FRONTIER

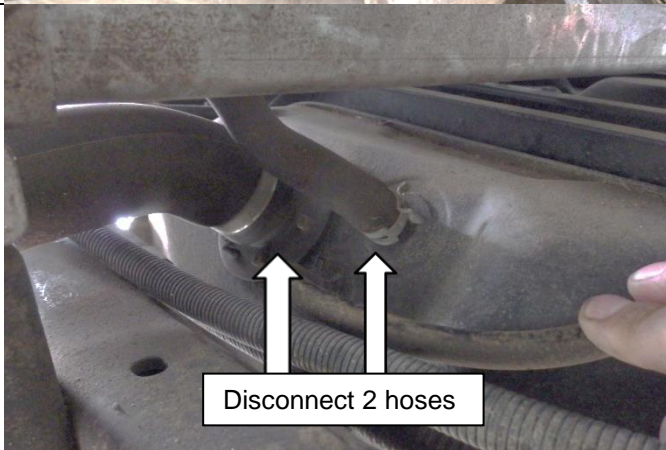
REMOVAL OF ORIGINAL FUEL TANK



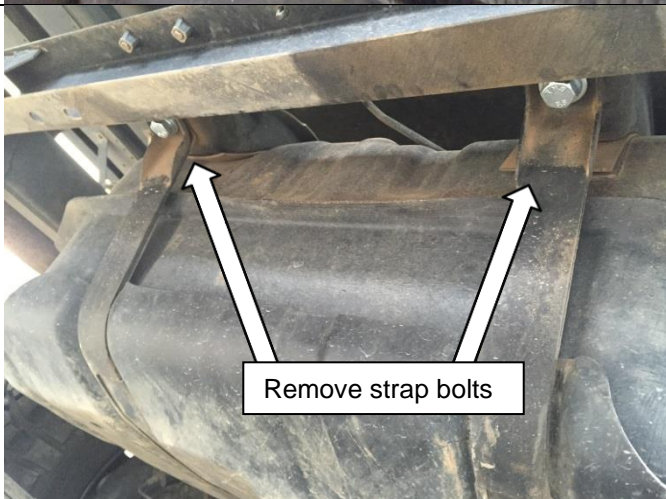
Disconnect the 12mm supply and 10mm return hoses from both the steel lines on the tank, and the steel pipes on the vehicle at the RHF corner of the tank.



Disconnect the fuel sender wiring from the plug holder at the LHR corner of the fuel tank.
Remove loom from retaining clips above tank on the chassis so that the loom can be removed with the tank.

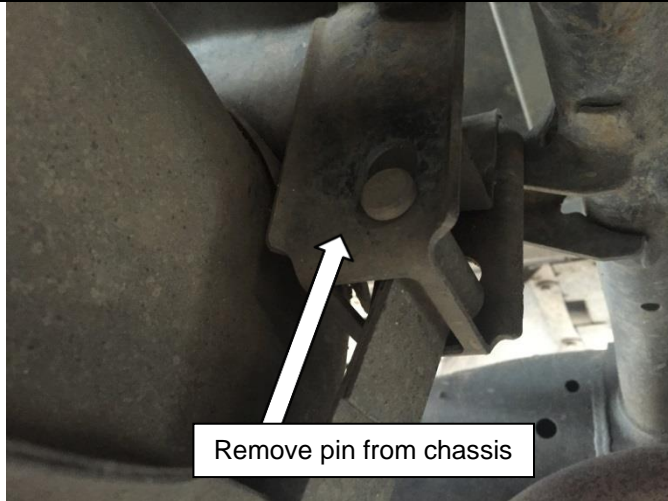


Disconnect the 50mm fill hose and 16mm fill breather from the RH side of the fuel tank.
Retain the clamps for the installation process.



Remove the 2 tank strap mounting bolts.

REMOVAL OF ORIGINAL FUEL TANK



Swing the straps down under the tank, and then lift slightly to remove the mounting pins from the chassis rail in front of the fuel tank.

Retain the mounting pins for the installation process.



Remove the fuel sender and gasket from the original fuel tank.



Remove gasket from mounting flange.

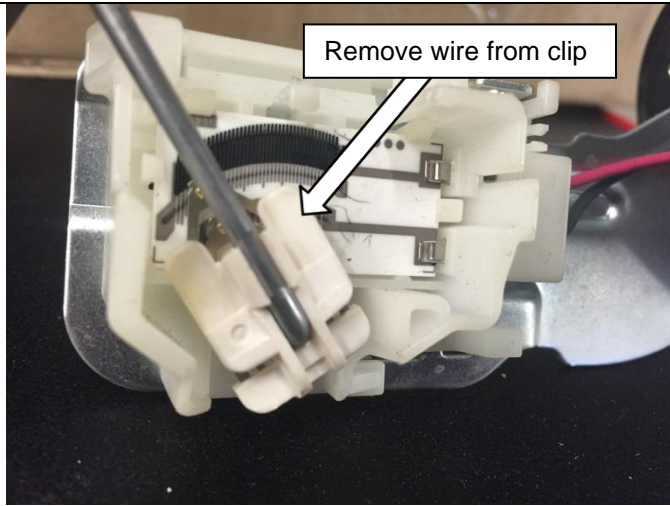
Drill out the 5 mounting holes in the sender mounting flange to 6mm.

Reinstall gasket to mounting flange.



Remove the retaining clip from the float arm wire and slide the float off the arm. Retain the float.

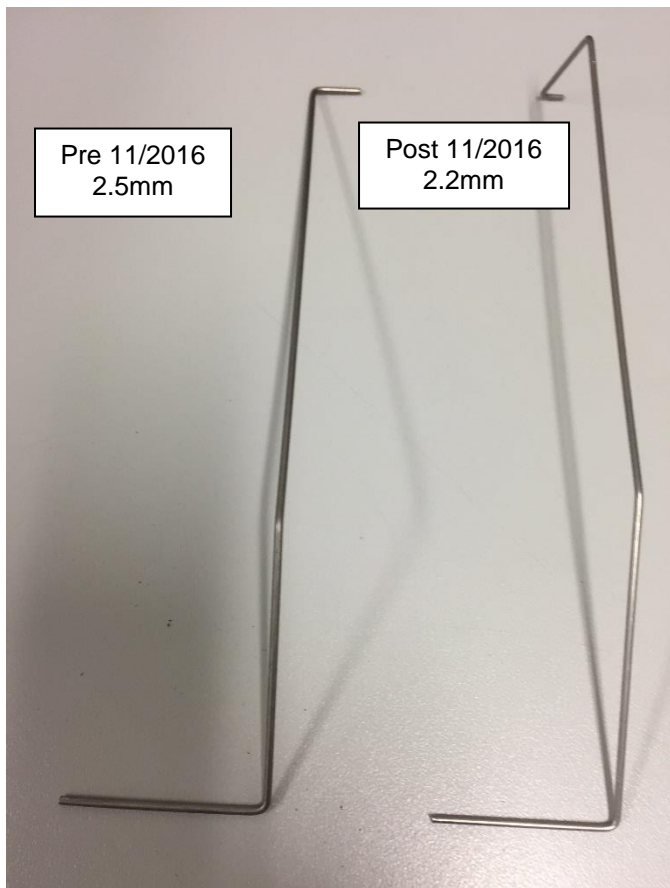
REMOVAL OF ORIGINAL FUEL TANK



Carefully remove the float arm wire from the sender wiper arm.

Use care, the sender wiper arm is delicate and can be easily damaged.

INSTALLATION PROCEDURE

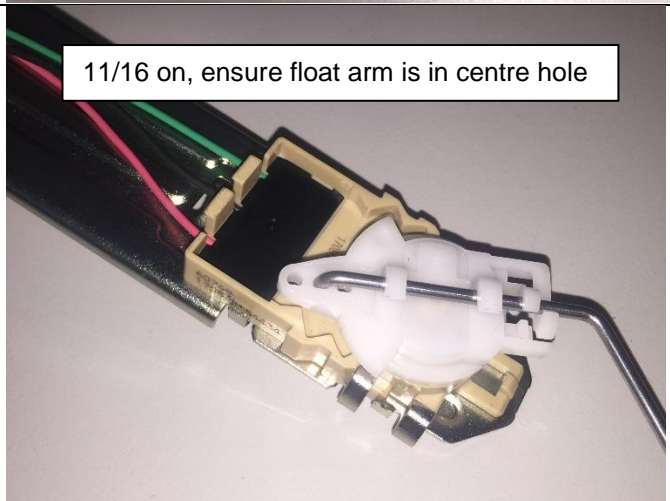


Identify and select the correct float arm for the vehicle model being installed.

For models manufactured before 11/2016 used the 2.5mm dia float arm.

For models manufactured after 11/2016 use the 2.2mm dia float arm.

Install the correct float arm into the sender.



When installing new float arm into late model fuel sender, ensure that the float arm is installed into the centre hole in the rotating assembly.

INSTALLATION PROCEDURE



Install new retaining clip

Install float onto new float arm.

Secure in place by installing new retaining clip onto float arm.



Remove rollover hose

Remove the rollover vent and hose from the original tank and retain.



Install the sender assembly into the fuel pick up on the Frontier tank. Secure using the 5 M5 x 12 pan head screws supplied in the kit.

Install the 500mm lengths of 12mm and 10mm fuel hose to the outlets on top of the tank. Secure using the hose clamps supplied.

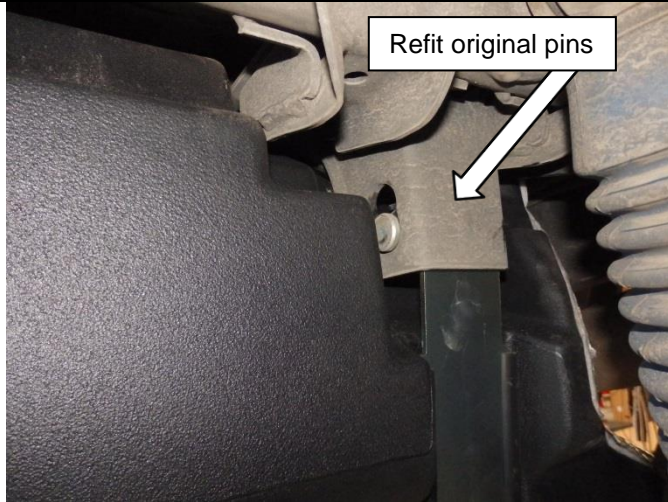
Install the rollover breather hose to the rollover valve on top the tank. Secure the hose to the supply hose as shown.



Remove the yellow adhesive cover from the rubber insulator pads.

Install the pads in the channels on top of the tank as shown.

INSTALLATION PROCEDURE



Raise the new Frontier tank into the vehicle. When in position install the new mounting straps into the chassis at the front of the tank and insert the mounting pins.



Swing the straps under the tank and into position. Secure strap using original mounting bolts retained from the removal procedure.



Reconnect the 50mm filler hose and 16mm filler breather hose on the RH side of the tank.



Connect the 12mm and 10mm hoses from the tank supply and return to the pipes at the front right corner of the tank. Secure using the clamps supplied in the kit.

INSTALLATION PROCEDURE



Add fuel to vehicle and run engine to check for leaks. Check fuel sender for correct operation.

Note, it may take several minutes or several cycles of the ignition for the gauge to show a true reading if the new fuel level is less than the previous level. It is possible it will still show the fuel level that was present before removing the original tank. This is normal operation as the fuel gauge is controlled by the vehicle's body control module.

Install Gauge Caution Sticker to RH upper side on the inside of the vehicles windscreen.

FITTED PRODUCT

