

ALSO AVAILABLE



VW T6.1 (2019+)
GRILLE INTEGRATION KIT



VW CRAFTER (2017+)
GRILLE INTEGRATION KIT



FORD TRANSIT CUSTOM (2018+)
GRILLE INTEGRATION KIT



FIAT DUCATO (2014+)
GRILLE INTEGRATION KIT



MERCEDES SPRINTER (2018+)
GRILLE INTEGRATION KIT



MAN TGE (2017+)
GRILLE INTEGRATION KIT



CLIP-ON LENSES
AMBER AND REEDED LENSES



CAN INTERFACE
PLUS CONTACTLESS READER

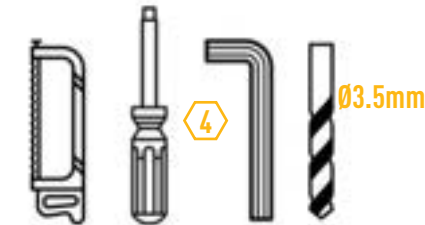
WHAT'S INCLUDED

- 4x Grille Mounting Brackets
- 4x Cutter Guides
- Anti-Theft Fasteners & Key
- Fitting Instructions

Additionally - Kit Includes:

- 2x High Performance LED Spotlights (Linear-6)
- 1x Two-Lamp Wiring Kit

TOOLS REQUIRED



! SIDE MOUNTING INFORMATION



LAZER
HIGH PERFORMANCE LIGHTING

WWW.LAZERLAMPS.COM

+44 (0)1992 677374
sales@lazerlamps.com

Lazer Lamps Ltd, Units 1&2 Harlow Mill Business Centre,
Riverway, Harlow, Essex. CM20 2FD. United Kingdom

MADE IN THE UK /LAZERLAMPS /LAZERLAMPS

LAZER
HIGH PERFORMANCE LIGHTING

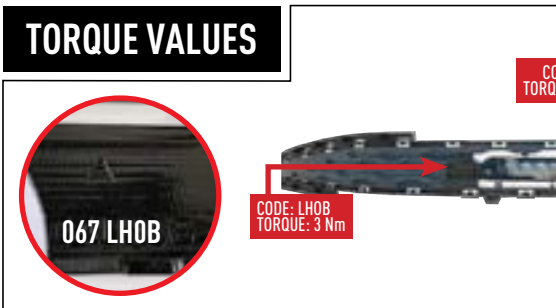
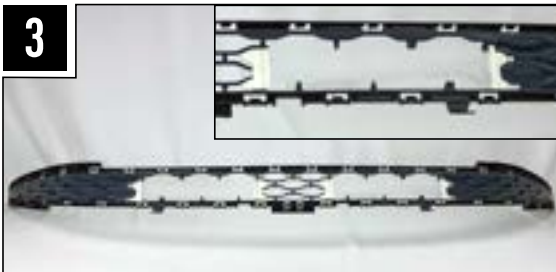
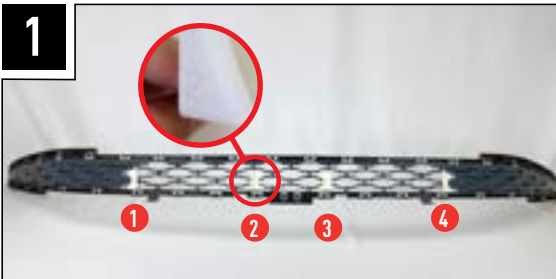


VW T7 (2022+)
GRILLE INTEGRATION KIT

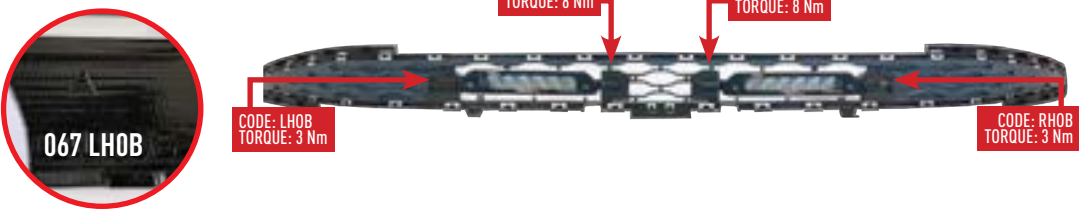
FITTING INSTRUCTIONS

INSTALLATION PROCESS

Install should be
completed with the
grille left on the
vehicle.

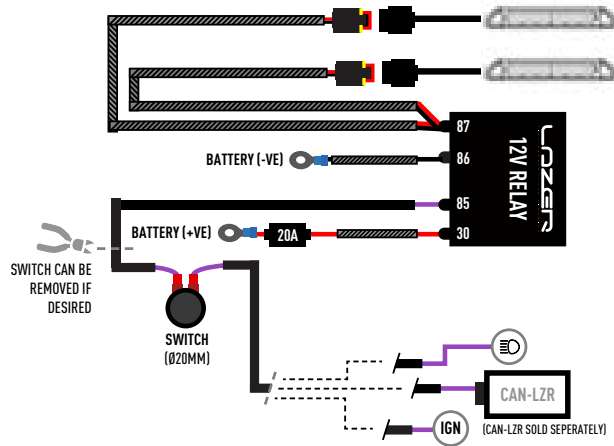


TORQUE VALUES



ELECTRICAL CONNECTION

LINEAR-6 (STANDARD OR ELITE)



CANBUS INTEGRATION

For vehicles where it is not possible to locate a 12V high beam signal, it will be necessary to take the high beam signal from the vehicle's CAN system. For vehicle specific CAN instructions, please download the "CANM8 Connect" App.

