

FORD RANGER 2022 ➡

REAR FENDER FLARES INSTALLATION INSTRUCTIONS

NOTES:

- Ensure that both left and right hand Fender Flares suit the profile of the vehicle. Note the areas where the Fender Flares come in contact with the vehicle.
- Before fitting Fender Flares remove any mouldings, strips or existing flares from the wheel arch. If there is a body side moulding, mark where the moulding is to be cut, alternatively the Fender Flares can be cut to go around the moulding. Be sure to allow enough room for the extrusion.
- Read instructions carefully. This product must be installed exactly as specified in these instructions. Failure to do so may result in improper fit and/or retention.

PERSONAL PROTECTIVE EQUIPMENT:



Mask



Rubber Gloves

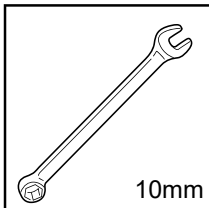
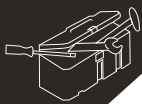


Goggles

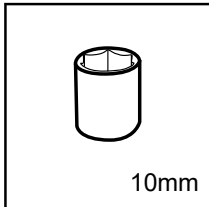
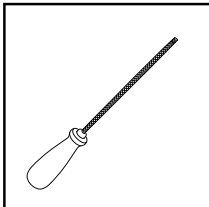
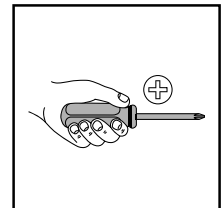
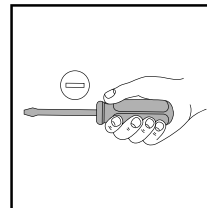
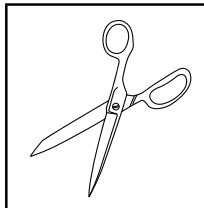
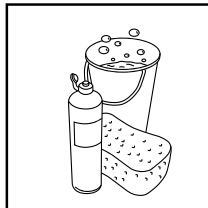
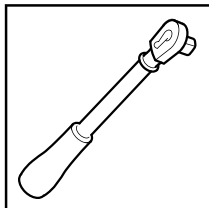


Hearing Protection

- Tools Required:**
- Small flat head Screwdriver.
 - Scissors or Sharp Knife.
 - 10mm Socket and Wrench
 - Phillips head Screwdriver.
 - Mild Soapy Water & Clean Cloths.



10mm

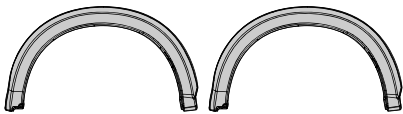


10mm



REAR FENDER FLARES INSTALLATION INSTRUCTIONS

PARTS IN FITTING KIT








XL, XLS, XLT, WILDTRACK

NO.	COMPONENT	PART NUMBER	QTY	PART
1	Smooth Rear Fender Flares (RHS & LHS)		2	

OR

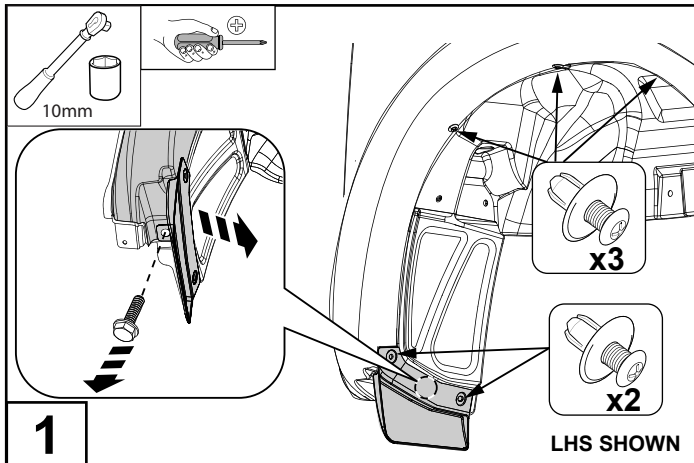
1	Bolt-On Rear Fender Flares (RHS & LHS)		2	
2	Bolt Cap*		16	

SHARED PARTS

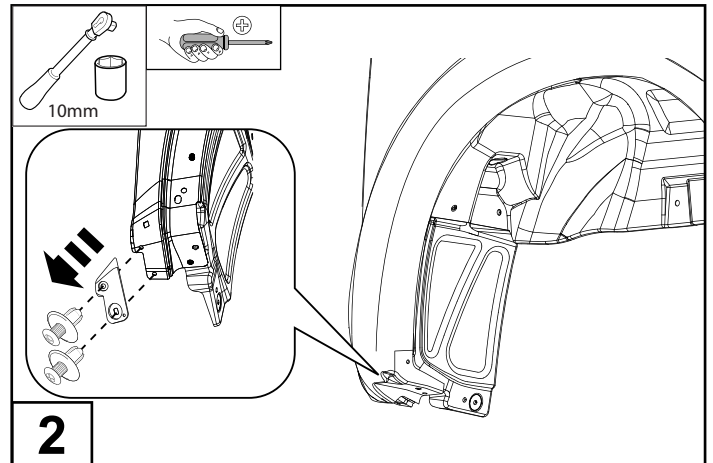
NO.	COMPONENT	PART NUMBER	QTY	PART
3	Extrusion	MISC3729	2	
4	U-Nut	NUTS0198	10	
5	Pan Head Screw	SCRW0735	10	
6	Alcohol Wipe	MISC0052	2	
7	Primer	MISC1365	1	
8	Fitting Instructions	FF981	1	
9	Anti-Abrasive Tape		2	

REAR FENDER FLARES INSTALLATION INSTRUCTIONS

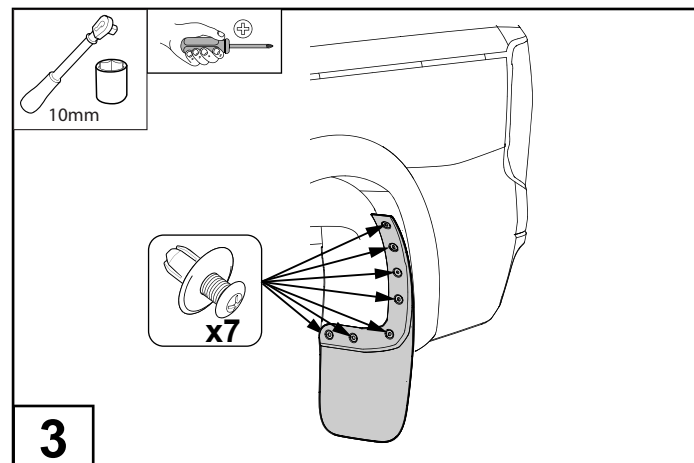
⚠ LHS INSTALLATION INSTRUCTIONS SHOWN. REPEAT ALL STEPS FOR THE RHS. ⚠



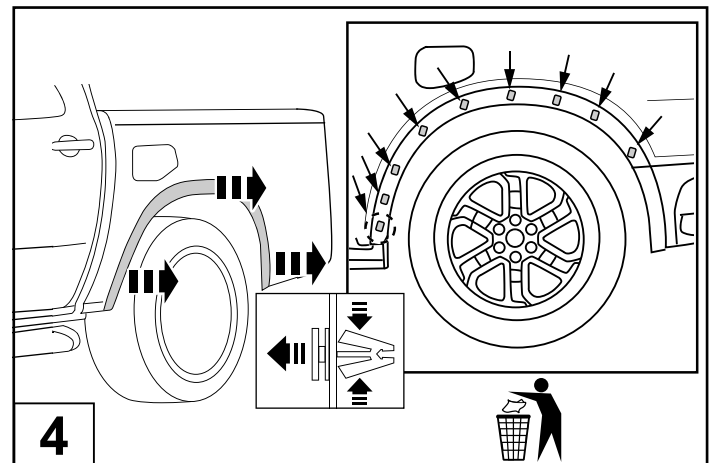
1
To remove the front mudflap unfasten 2 scrivets and 1 screw located underneath the fender. Retain the screw and mudflap for reattachment. Remove 3 scrivets from the top of the fender flare and discard.



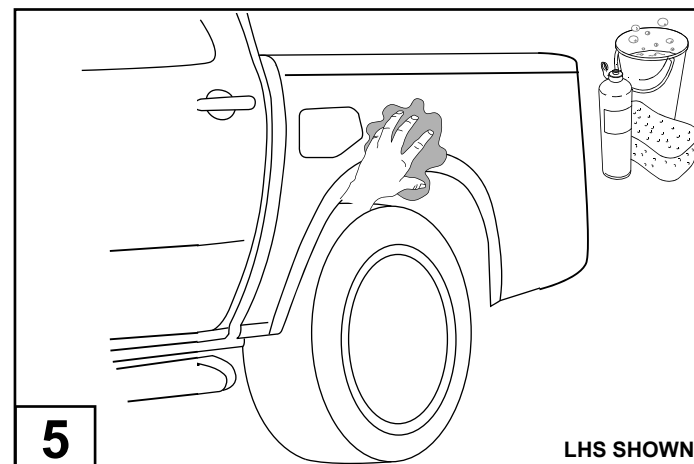
2
Skip step if not applicable
Remove the rubber garnish by unfastening 1 scrivets and 1 screw located underneath the fender and discard all.



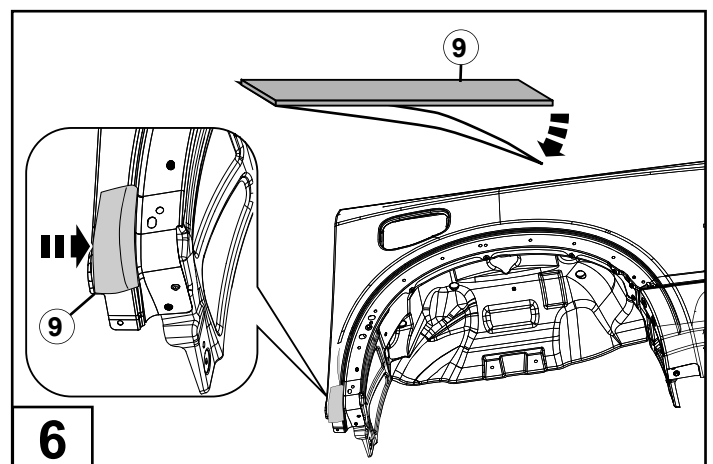
3
Remove the rear mudflap by removing 7 scrivets. Retain 5 scrivets and the mudflap for reattachment. Discard 2 scrivets.



4
Pull off the factory fender flare. Remove clips that were used to secure the factory fender flare.



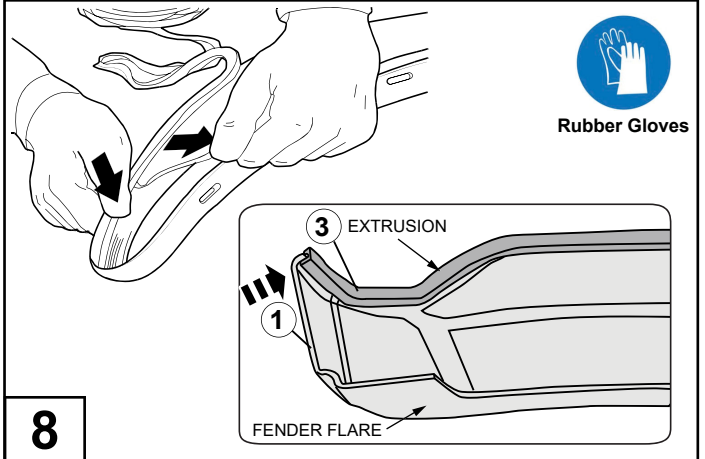
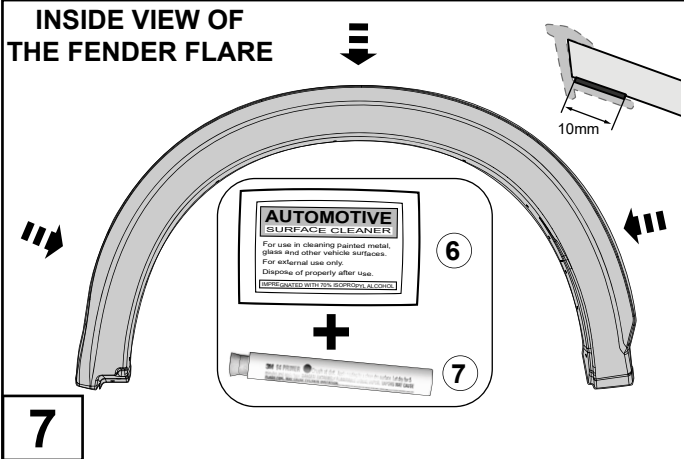
5
Wash the areas of contact on the vehicle and wipe dry both the vehicle and the Fender Flares with a clean cloth.



6
Remove backing from Anti-Abrasive Tape (9). Apply Anti-Abrasive Tape (9) in the location shown.

REAR FENDER FLARES INSTALLATION INSTRUCTIONS

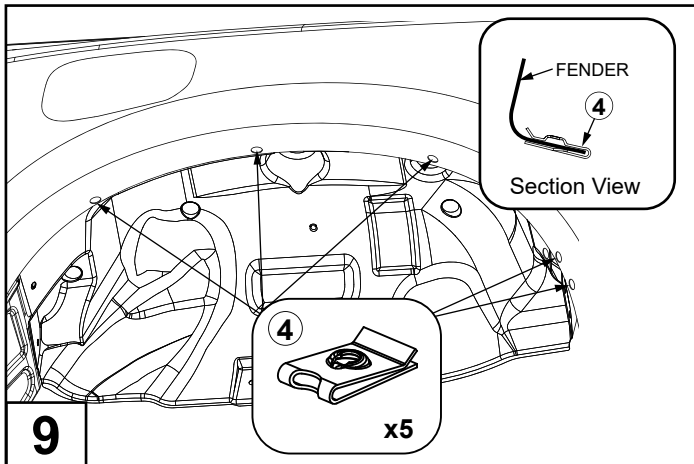
INSIDE VIEW OF THE FENDER FLARE



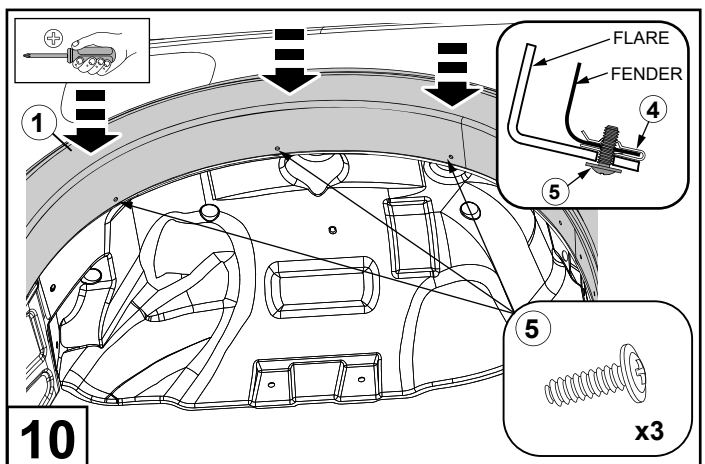
Where the Rubber Extrusion (2) will adhere (inside edge), clean the inside edge of each Rear Fender Flare (1) with Alcohol Wipe (6) and apply Primer (7). One Primer Stick (7) will cover the required area for both Flares.

NOTE: Allow Alcohol Wipe (6) residue to evaporate before applying Primer (7).

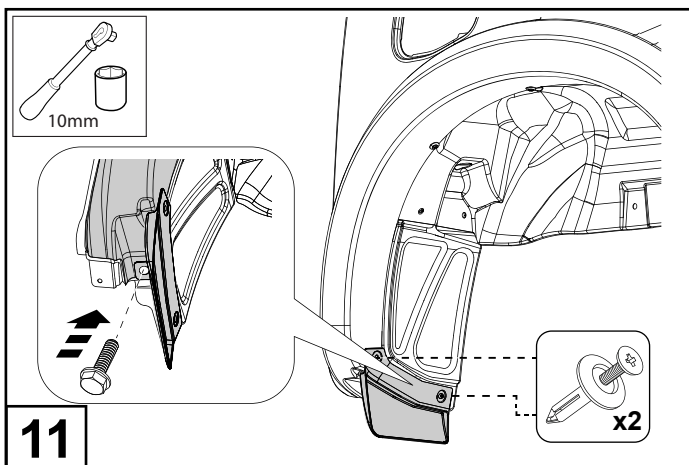
Remove approximately 50mm of the protective liner from the Extrusion (3). Gradually fit the extrusion to the flare (1) along the edge that comes in contact with the vehicles body panel while gradually removing the liner to keep the extrusion adhered to the flare as per the above illustration. Trim any unnecessary Extrusion (3) and discard.



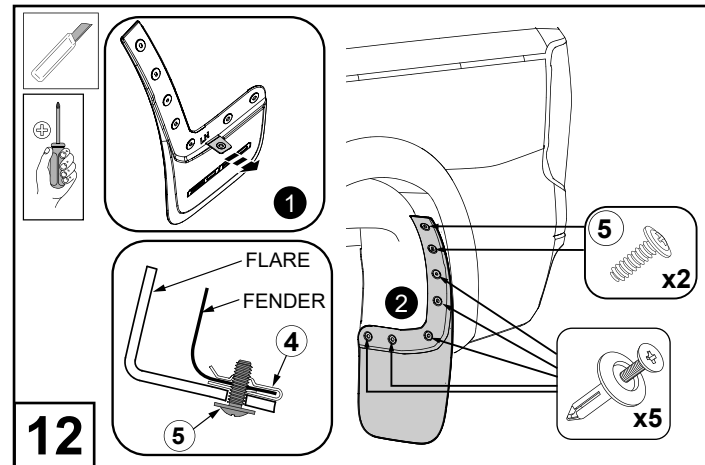
Push the 5 U-Nuts (4) over the edge of the rear fender as shown and align with existing holes.



Fit the Rear Fender Flare (1) to vehicle. Align holes secure with 3 Screws (5) as shown.

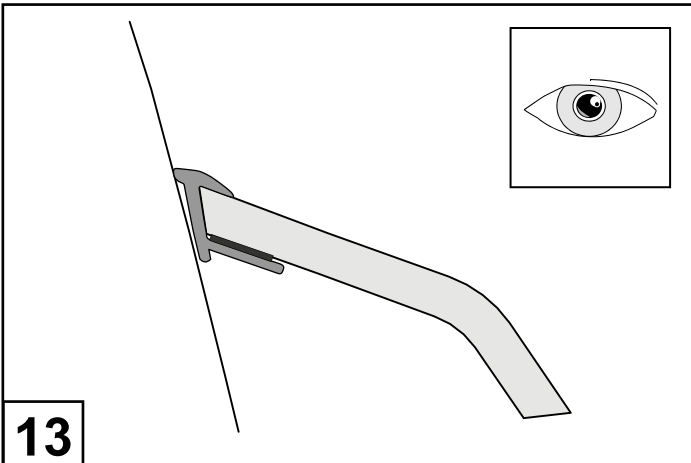


Using previously removed scrivets and Hex nut (Step 1), reinstall the front mudflap.

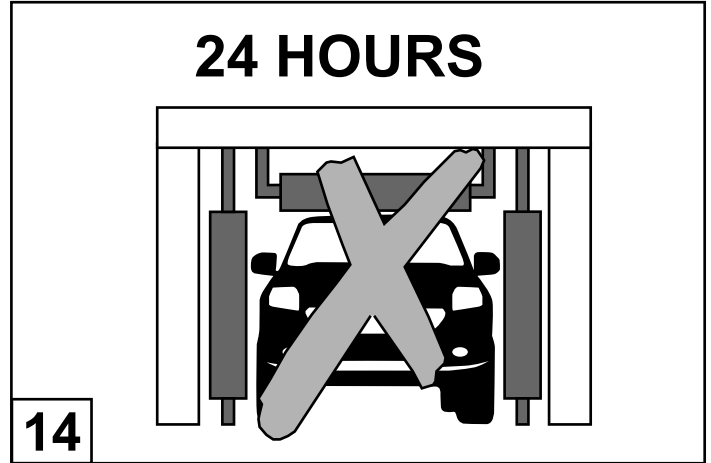


Cut tab located on the back of the mudflap. Place mudflap on the fender flare and attach using five previously removed scrivets at the bottom of the mudflap. At the top of the mudflap secure with two screws (5).

REAR FENDER FLARES INSTALLATION INSTRUCTIONS

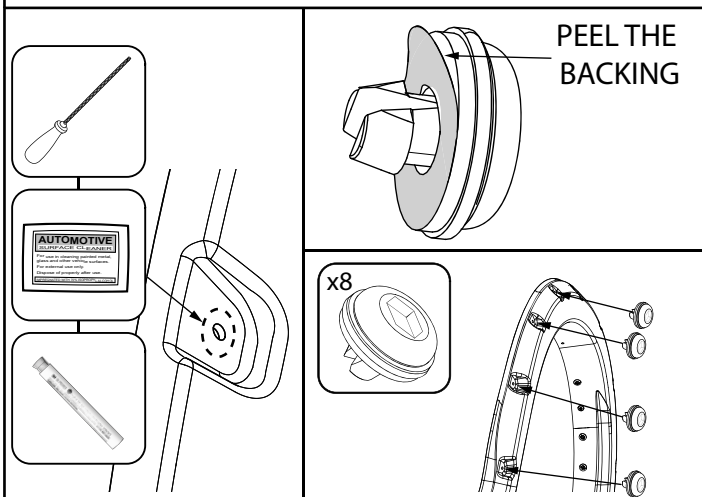


Ensure the Extrusion is firmly applied and flush with the vehicle.



Avoid agitation to the fitted Fender Flares, for example an automatic car wash or off road activity for at least 24 hours after fitting to ensure the Extrusion adhesive cures completely.

FOR BOLT-ON FENDER FLARES



Prime the Bolt Cap areas around the Flare. Peel the backing tape from the Bolt Cap. Firmly insert a Bolt Cap in each fender flare recess hole. Repeat this step on every fender flare.