

**Date:**

April 2019

**Description:**

ARB Summit Bar

**Application:**

Suzuki Jimny MY19

**Part No. & Barcode:**

3424050 - 9332018062901

**Product Group:**

026 - Summit Bull Bars

**Fitting:**

2 Hours

**Availability Date:**

Pilot run due early April 2019. First production run mid April 2019



## Product Specification

For the Australian media launch of the eagerly awaited Jimny, Suzuki Australia enlisted ARB to develop a static display of a kitted out Jimny called “Project JBOX”. The result is an ARB bar design, drawing features from a number of different ARB bar styles.

Proven ARB Summit Bar features such as the press formed cover straps, three piece split pan grill, press formed top pan and recessed control box mount are included. ARB’s traditional Deluxe Bar design has inspired the 47.6mm tube work and 10mm radius on the wings and centre pan to perfectly match the Jimny. Integrit textured black powdercoat has come from products initially developed for ARB’s USA market.

Whilst the Project JBOX development centred largely around the bar assembly, design and development, testing of chassis mounts and winch loads were still required once ARB’s own Jimny arrived. The bar is attached to the vehicle chassis with M10 bolts and fasteners to ensure that the 8,000lb winch loads are catered for.



## Protection and Styling Characteristics:

- Vehicle specific design for the Suzuki Jimny MY19
- Durable steel construction for maximum protection
- Incorporates ARB's renowned multi fold upswept and tapered wing design for optimum strength and approach angle
- 10mm radius on wings and centre section. 47.6mm outer and centre cross tube
- Engineered, air bag compatible mounting system secures to the chassis via high tensile M10 fasteners
- Split pan design for maximum strength and airflow
- Three piece grill for split pan
- Centre protection panel
- Pressed form top pan and aluminium (Integrit textured black finish) winch cover panel
- Twin ARB Jack or mechanical jack points adjacent to the bar uprights
- Includes ARB LED indicator and clearance light
- Will accommodate Warn and mid frame winches up to 8,000lb
- Provision to accommodate ARB Intensity LED's, as well as a range of Bushranger and IPF lights
- Provision for OE headlight washers
- Provision for OE fog lights
- Provision for optional ARB Fog light covers part no 3500680
- Approach angle increased from 35° to 37°
- Bar adds approximately 120mm to the overall length of the vehicle
- Approximate weight of the bar, chassis mounts and fitting kit is 45kg. Approximately 8kg is removed from the vehicle for fitment
- Finished in Integrit textured black powder coat. Integrit not suitable for colour coding

## Split Pan Grill and Fog Light Surround:

ARB's Jimny bar features ARB's split pan grill and ARB Fog Light surround that suits fitment of the original equipment Suzuki Fog light.

To provide access to winch clutch handles and to assist with valuable air flow to the radiator the split pan has a three piece grill for an integrated, OE style appearance. Dual doors allow access to winch clutch handles and to assist with driving light fitment and adjustment.





## Fog Lights:

ARB's Combination Bar for the Jimny features ARB's fog light surround that accepts the OE Suzuki fog light.

A clear fog light cover is available under part number 3500680.



## LED Clearance Light / Turn Signals:

Press form apertures in each wing are provided to fit ARB's LED clearance light / turn signal.

## Driving Light Mounts:

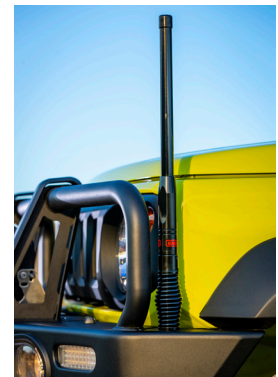
The press formed top pan includes laser cut holes for fitment of a range of compatible driving lights including ARB Intensity, Bushranger and IPF 800, 808 and 900 Series lights.

Pinning holes for ARB Intensity lights are included.



## Antenna Mounts:

Two aerial mounts are provided on the outer wings of the bar to allow fitment of UHF/AM radio, mobile phone aerials/antennas or sand flags. Blanking plugs are provided for when no antenna is fitted.



## Integrit Textured Powder Coat:

Designed for maximum aesthetic appeal, the Integrit finish is designed completely with off road conditions in mind.



## Pressed Top Pan and Winch Cover:

The top pan of the Jimny bar features a press form to add strength and a 4mm aluminium press formed winch cover panel, for when no winch is being fitted.

When fitted, the winch cover panel is recessed in the press form top pan to give a level and integrated appearance.

The cover is supplied in an Integrit textured black powder coat finish.

## Winch Model Fitment:

The following winches fit the Jimny Combination Bar:

- Warn M8000
- Warn ZEON 8 and 8-S
- Mid frame winches up to 8000lb

Winch size is **LIMITED TO 8000LB** due to the vehicle chassis and bar chassis mounts.

Please note that not all winches on the market will have corresponding control box mount holes pre-drilled.

Additional fit kits are required depending on the winch being fitted:

- 3500720 WINCH INSTALL KIT SUMMIT BAR. This kit includes a control box mount, flip up number plate bracket and necessary fasteners.
- Warn ZEON fitment require Warn part No W89965 Short Wiring Kit.



## Jack Points:

The ARB Jack or mechanical jack point is welded directly to the upright on either side and is designed to prevent the jack from interfering with the face of the bar.

Note: Prototype bar shown

