

RIVAL MODULAR ROOF RACK



Ultimate strength

Reinforcing profile

Aluminum platform and brackets

Slim design



Universal platform
for top pickups



2 hours
installation



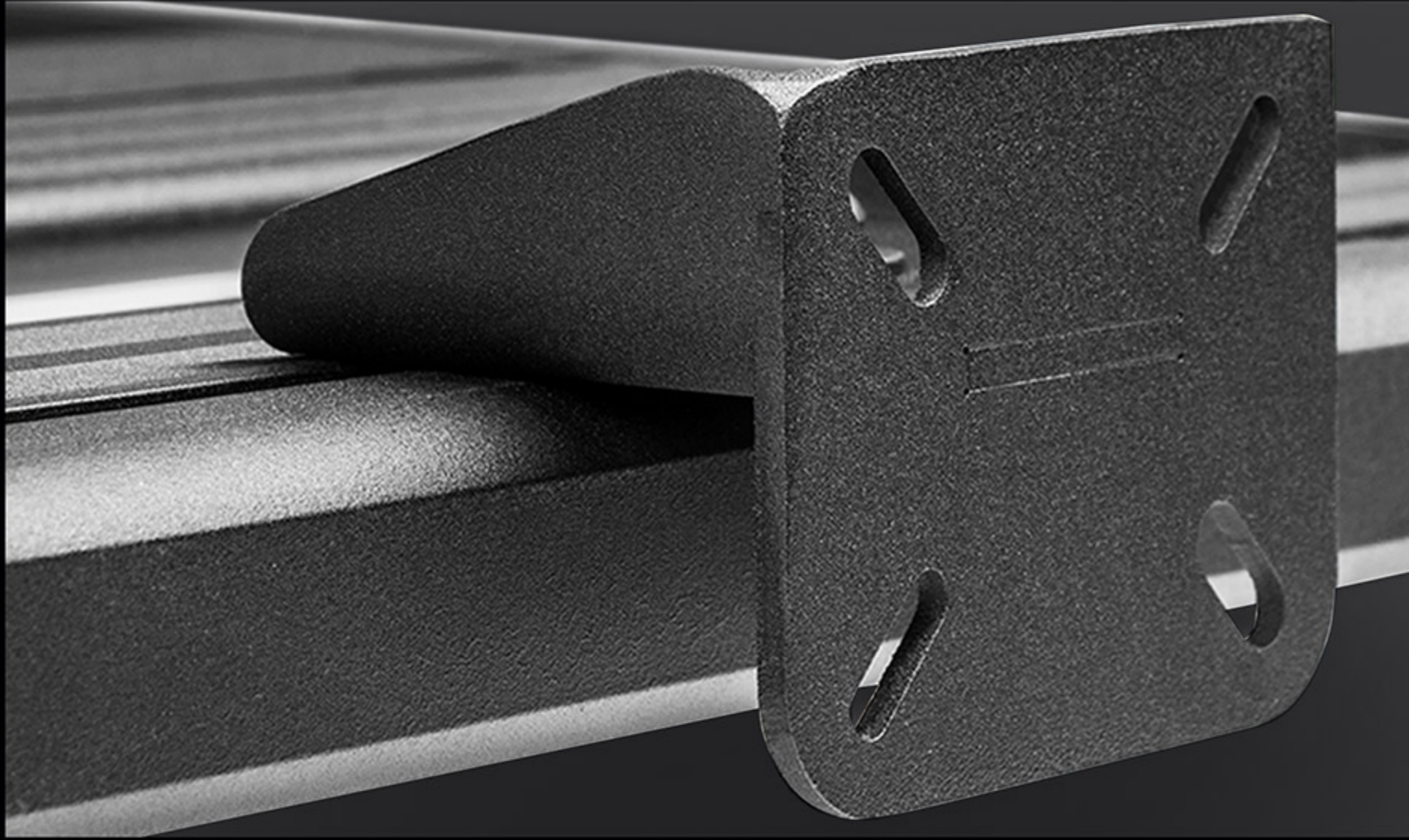
Individual
brackets design

Whilst developing the Rival Modular Rack we have investigated all options to make it universal yet unique for each application.

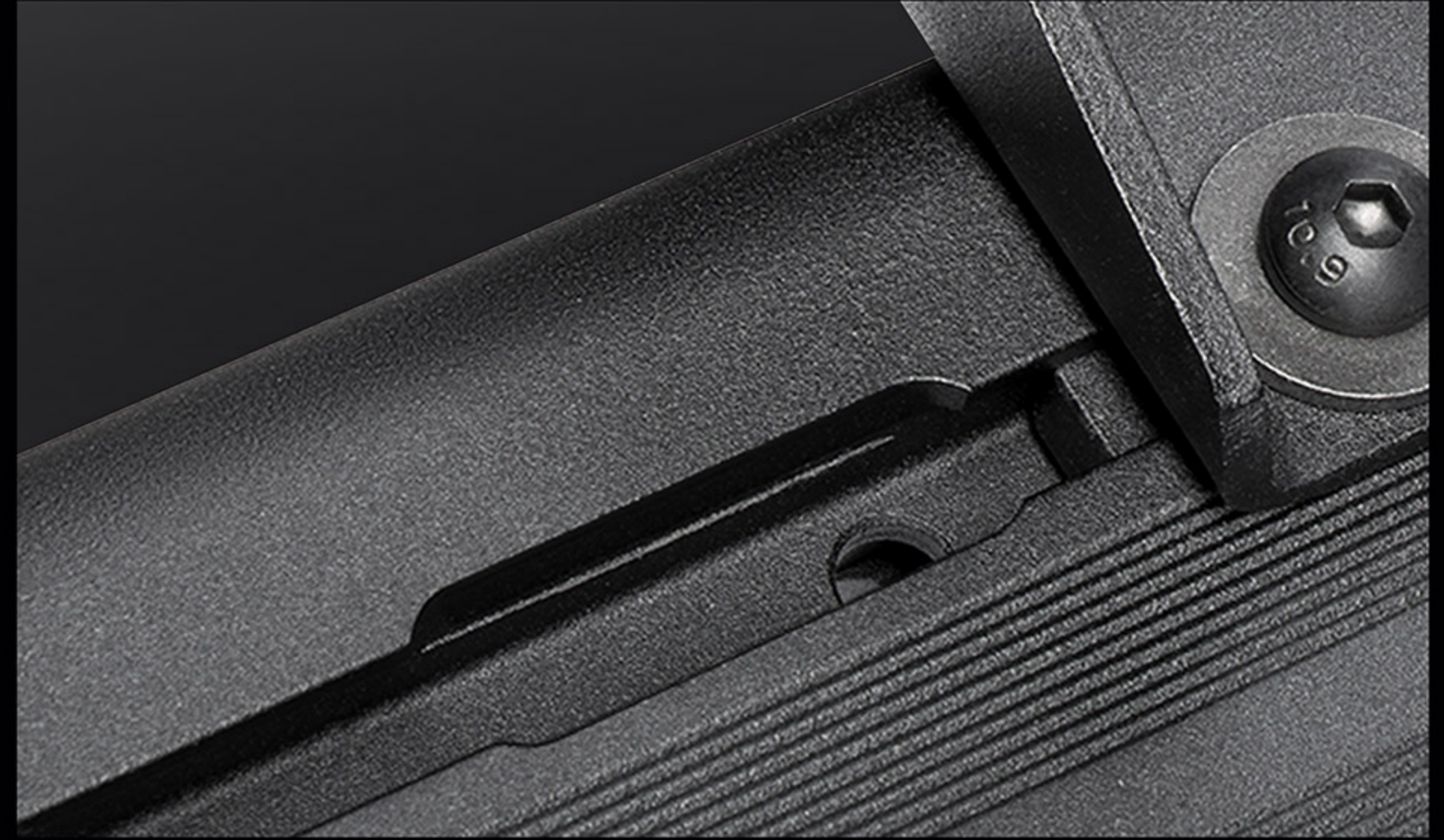
Strong for off-road and functional for long-distance travels.

It offers versatility allowing it to be compatible with any accessory you may dream of. Whether an eight-week overland journey through Africa or a camping weekend, the Rival Modular Rack allows you to take the right gear for every adventure.

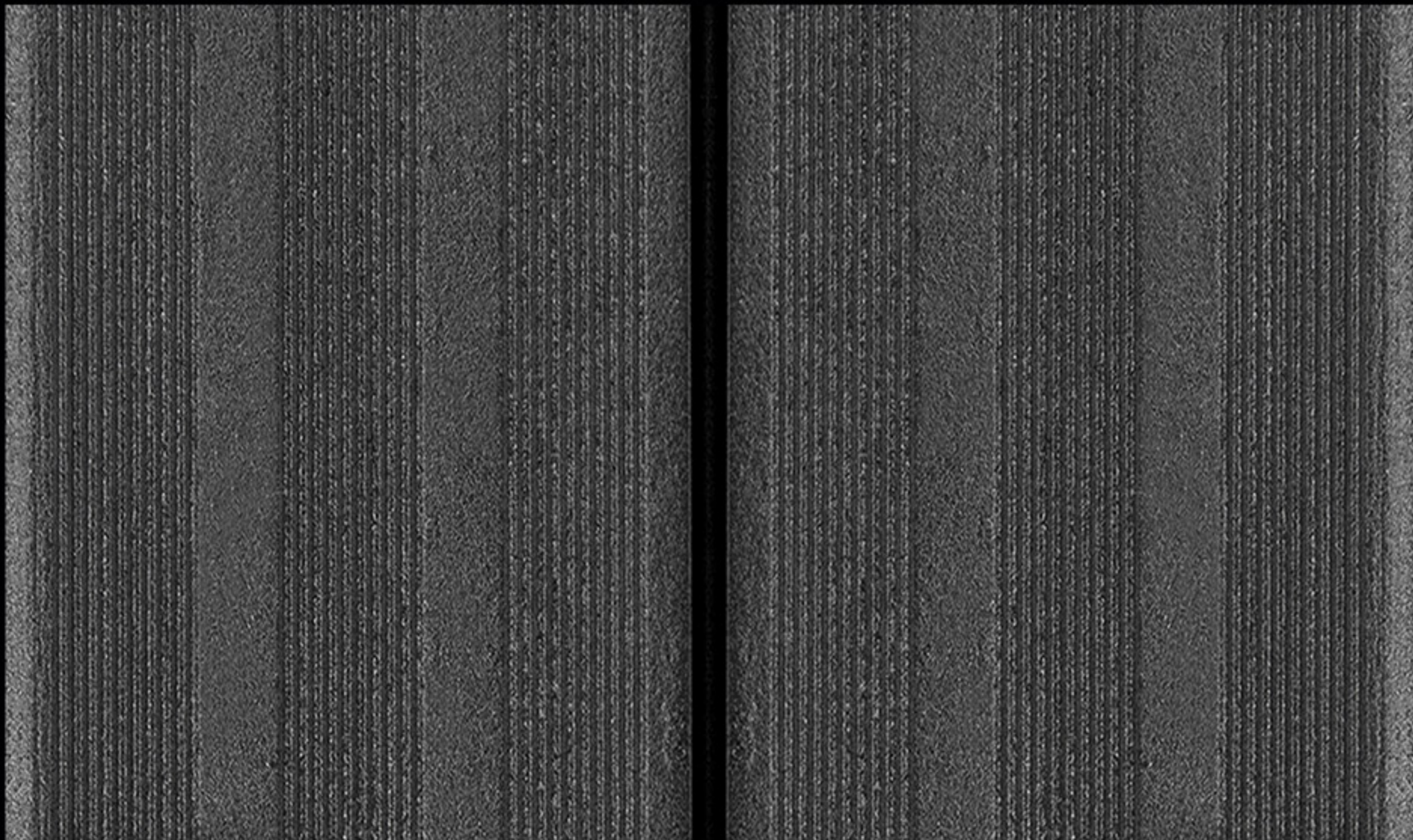




All holders and brackets are made from aluminum or stainless steel



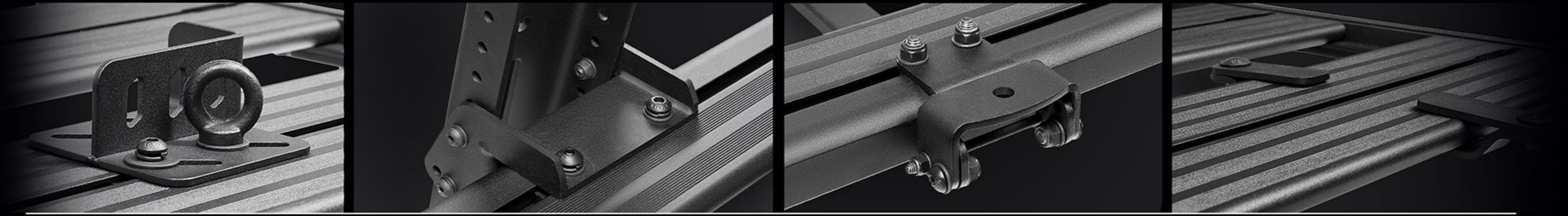
Top & bottom T-Slot in each profile



Black matt coating



Corrosion resistant hardware



RANGE OF BRACKETS & HOLDERS FOR KEY ACCESSORIES FOR OFFROADING AND OVERLANDING

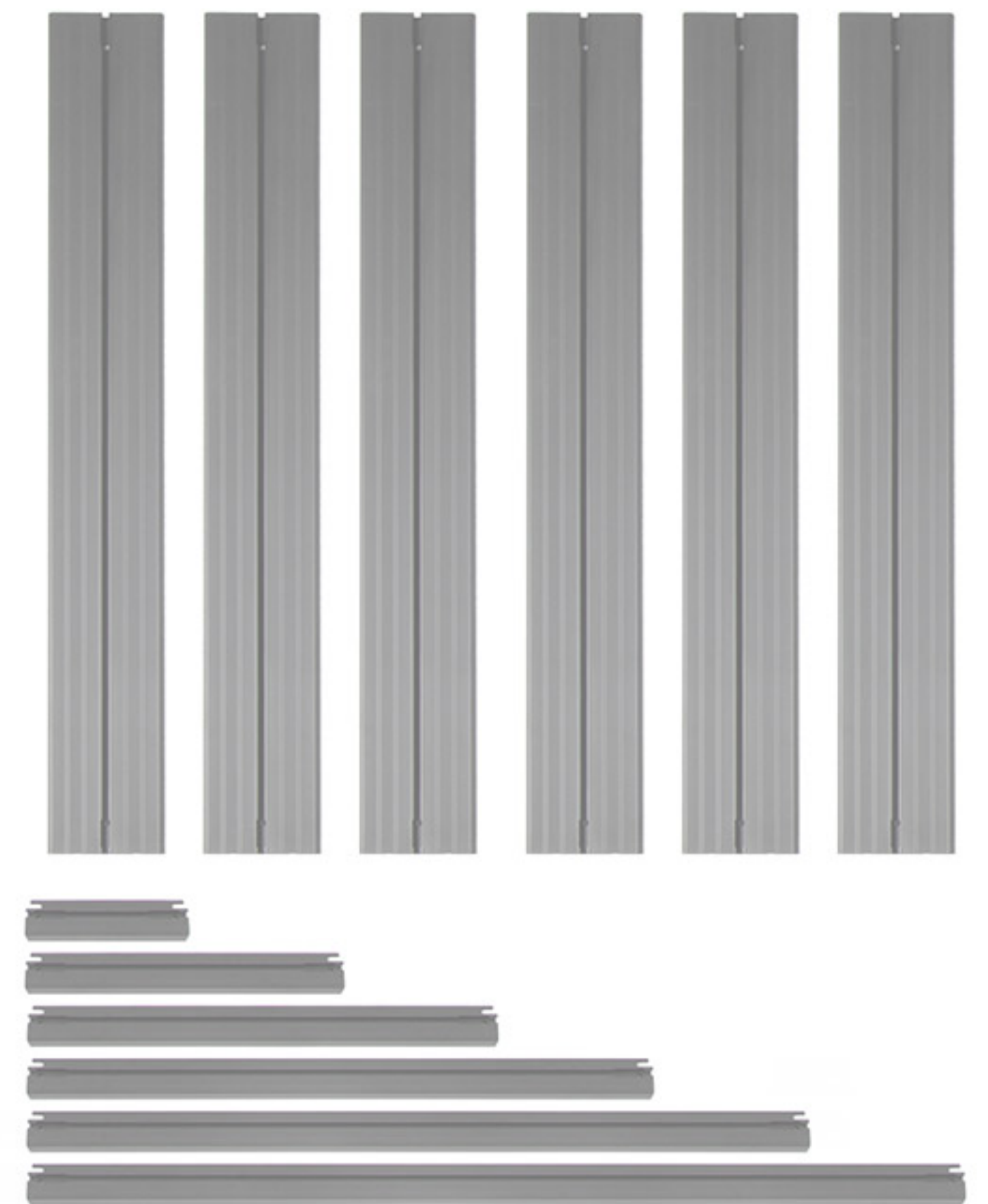
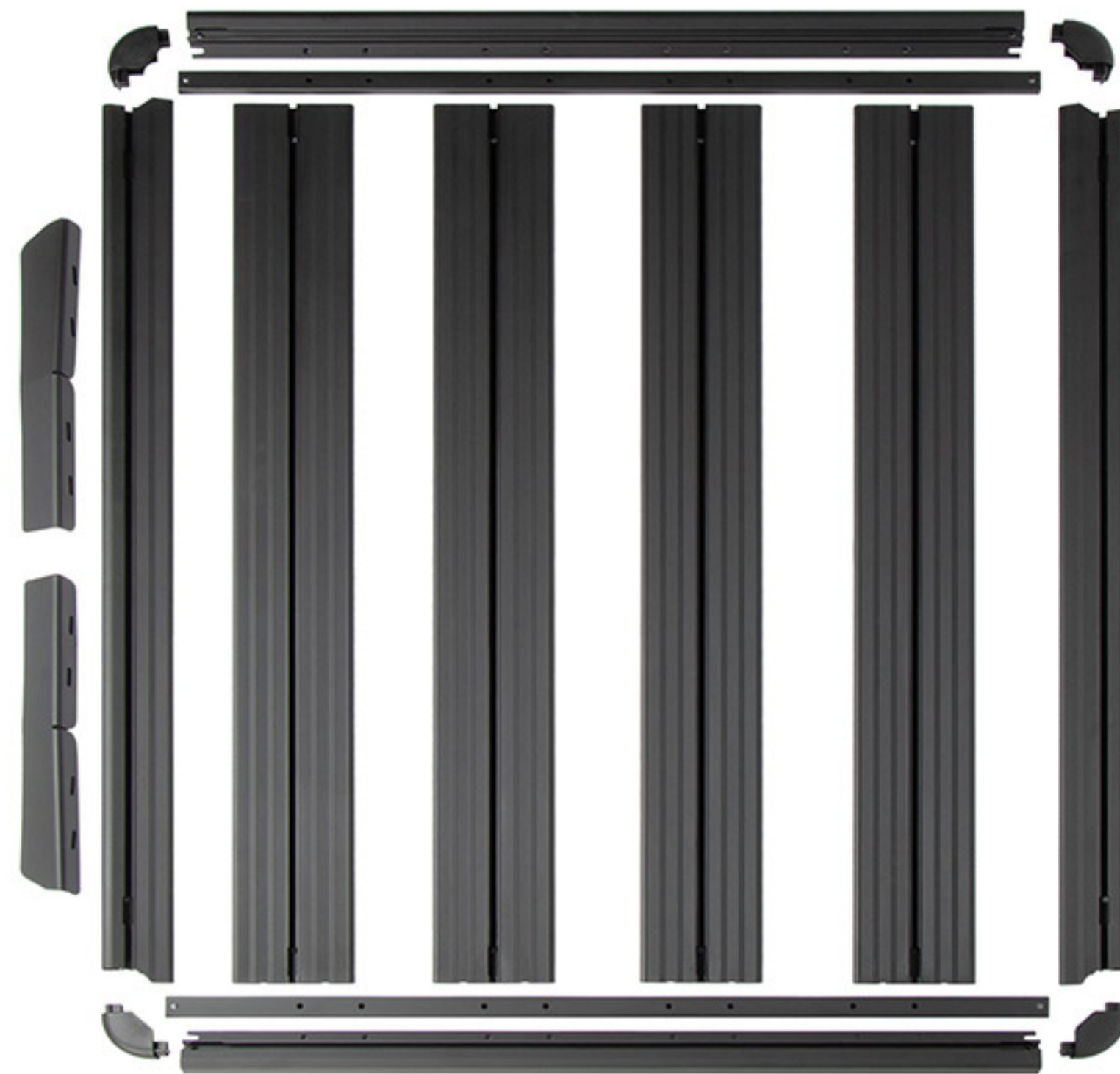
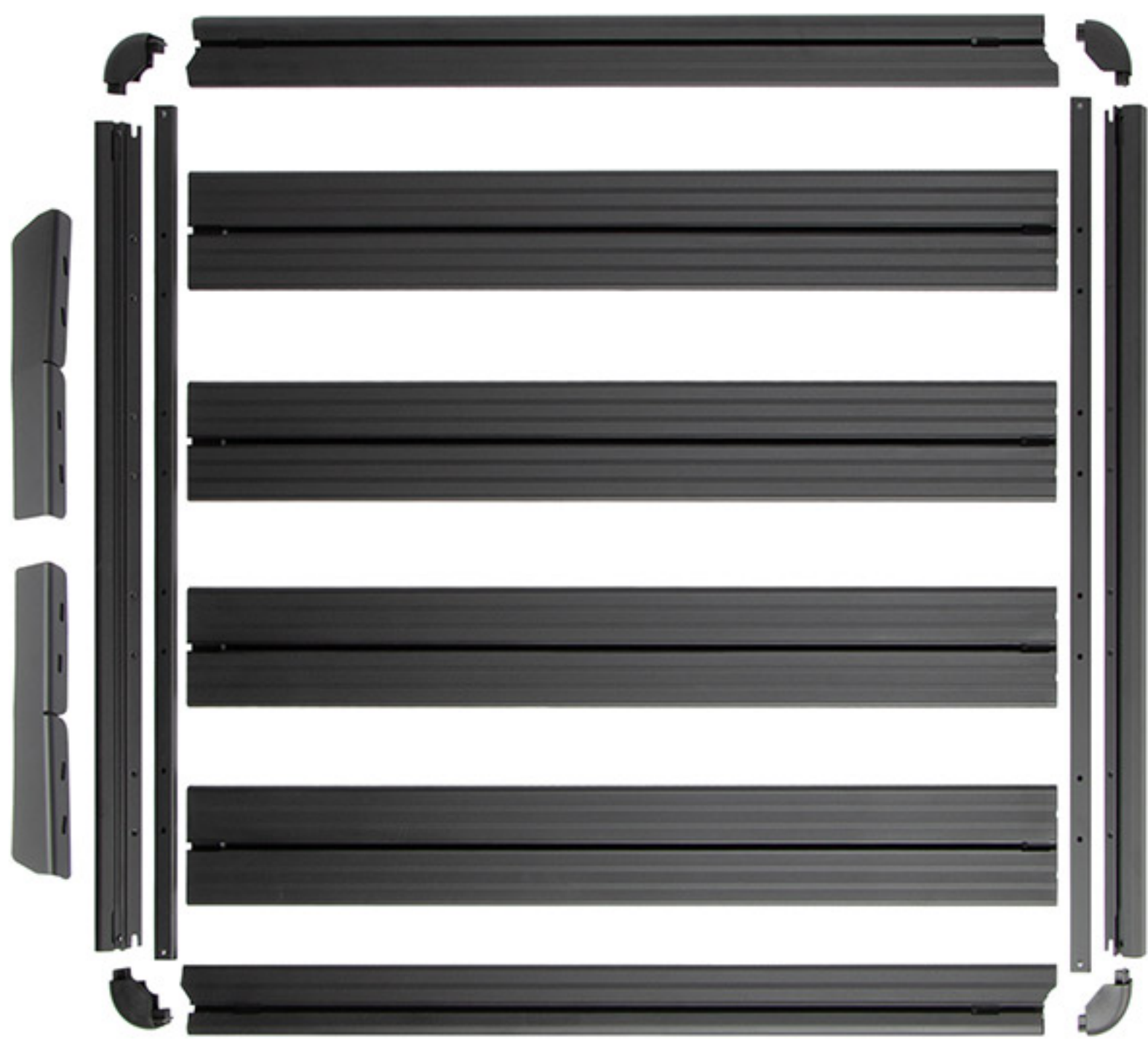


OPTIMAL INVENTORY - BROAD RANGE



One platform for all European pickups

True-modular system for SUVs



AVAILABLE RANGE FOR PICKUPS

TOYOTA HILUX (2015 - on) HILUX 2020 facelift LC 79

VOLKSWAGEN AMAROK (2010 - on)

FORD RANGER (2012 - on)

MITSUBISHI L200 (2015 - on)

LAND ROVER DEFENDER 130 (1990 - 2016)



AVAILABLE RANGE FOR PICKUPS



LAND ROVER	DEFENDER	130	1990 - 2016	2M.3101.3
TOYOTA	LAND CRUISER	79	2007-	2M.5702.2
TOYOTA	HILUX	REVO, ROCCO	2015-	2M.5701.1
VOLKSWAGEN	AMAROK		2010-	2M.5801.1
FORD	RANGER	T6	2012-	2M.1801.1
MITSUBISHI	L200	V GEN	2015-	2M.4001.1

AVAILABLE RANGE FOR SUVs

TOYOTA	LC 150	LC 200	LC 76	LC 78
LEXUS	LX 570	GX 460		
LAND ROVER	DEFENDER 90, 110 (2020)	90, 110 (1990 - 2016)		
MERCEDES-BENZ	G-CLASS (1990-2018)			
JEEP	WRANGLER JL			

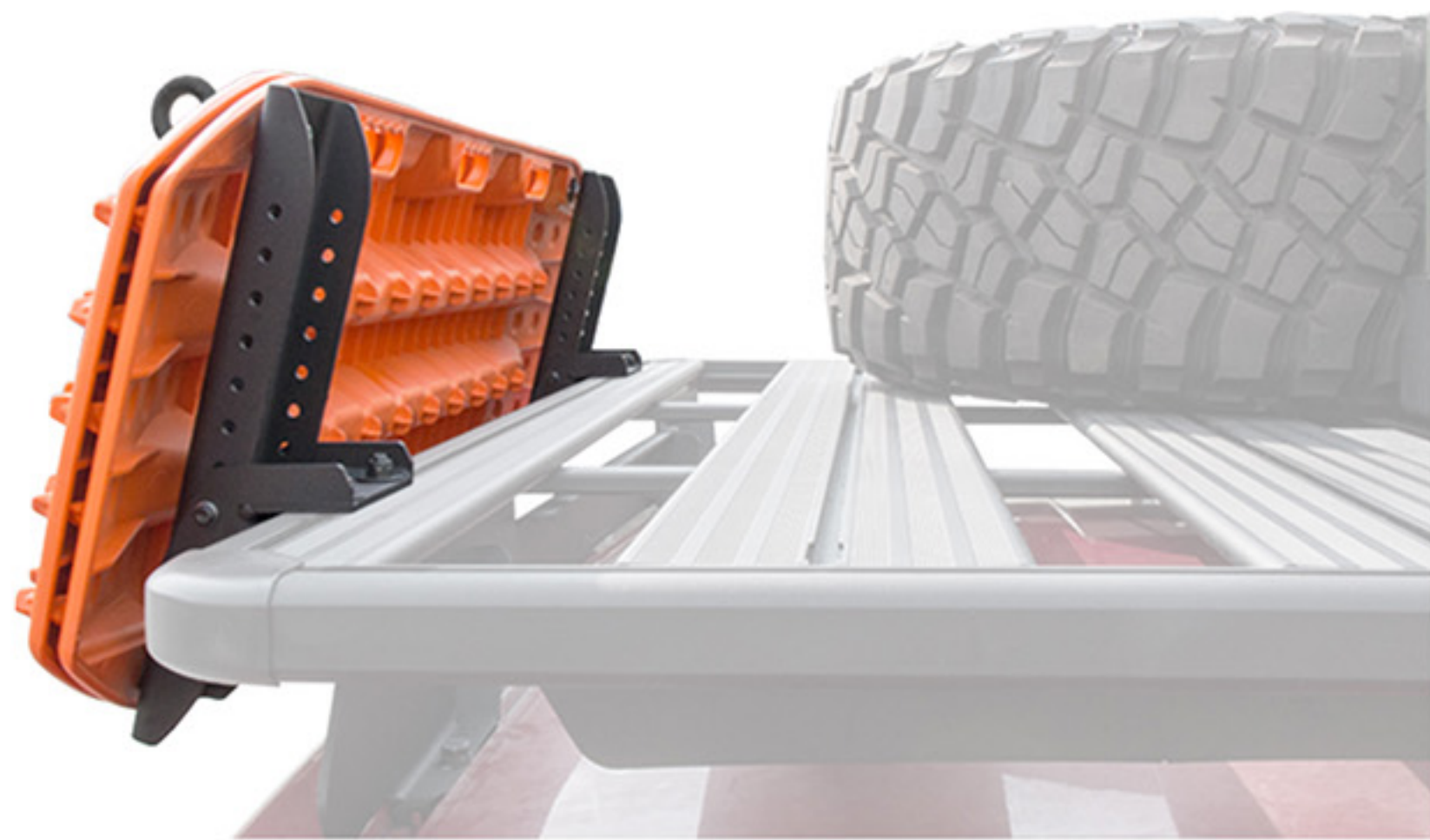


AVAILABLE RANGE FOR SUVs



LAND ROVER	DEFENDER	110	1990 - 2016	2M.3101.1
		90	1990 - 2016	2M.3101.2
		110	2020-	2M.3102.1
TOYOTA	LAND CRUISER	76	2007-	2M.5702.1
		78	2007-	2M.5703.1
		200	2007-	2M.5705.1
		150	2007-	2M.5704.1
LEXUS	LX	570	2010-	2M.5705.1
	GX	460	2010-	2M.5704.1
MERCEDES BENZ	G CLASS	II GEN	1990 - 2018	2M.3901.1
JEEP	WRANGLER	JL (4 DOOR)	2017-	2M.2701.1

RANGE OF ACCESSORIES



DOUBLE JERRY CAN HOLDER

2MD.0018.1

JERRY CAN HOLDER

2MD.0017.1

AXE HOLDER

2MD.0012.1

TIE DOWN NUT KIT (4 PCS)

2MD.0002.1

RECOVERY BOARD MOUNTING BRACKET (HORIZONTAL)

2MD.0010.1

RECOVERY BOARD MOUNTING BRACKET (VERTICAL)

2MD.0011.1

HOWLING MOON AWNING MOUNTING BRACKETS

2MD.0007.1

TENT MOUNTING BRACKET

2MD.0008.1

RANGE OF ACCESSORIES



TENT MOUNTING BRACKET

2MD.0009.1

TIE DOWN RING KIT (4 PCS)

2MD.0001.1

UNIVERSAL AWNING MOUNTING BRACKET

2MD.0006.1

UNIVERSAL LED BAR MOUNTING BRACKET

2MD.0004.1

UNIVERSAL RACK CARGO HOLDERS

2MD.0003.1

WORKING LIGHT MOUNTING BRACKET KIT (2PCS)

2MD.0005.1

SHOVEL MOUNTING BRACKET

2MD.0013.1

SPARE WHEEL HOLDER

2MD.0015.1

RANGE OF ACCESSORIES



WIND DEFLECTOR FOR RIVAL MODULAR ROOF RACK 1495 + FITTINGS

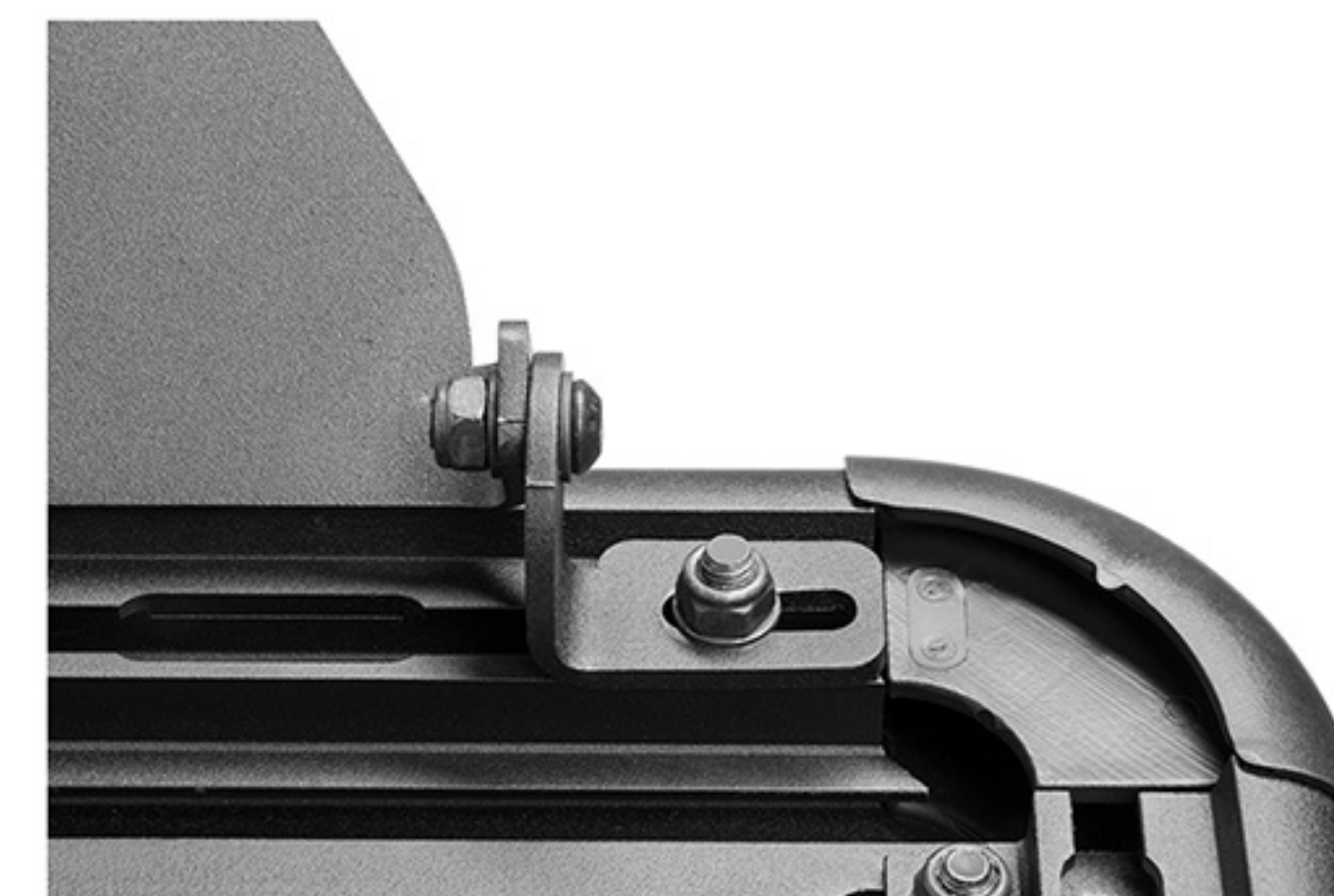
2MD.0021.1

WIND DEFLECTOR FOR RIVAL MODULAR ROOF RACK 1350-1430 + FITTINGS

2MD.0020.1

WIND DEFLECTOR FOR RIVAL MODULAR ROOF RACK 1190-1270 + FITTINGS

2MD.0019.1



HIGH-QUALITY CARTON PACKAGING LOGISTICS-FRIENDLY BOXES FOR ALL ITEMS



AFTERSALES MANAGEMENT

SPARE PARTS AVAILABLE:

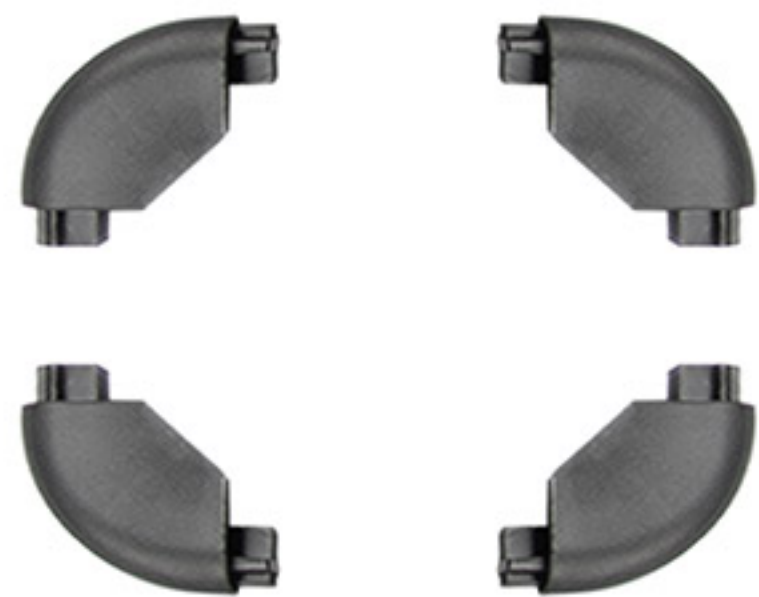
END-CAPS

HARDWARE

ADDITIONAL EXTENSION PROFILE

ADDITIONAL CROSSBARS

24
MONTHS
WARRANTY



THANK YOU



  RIVAL4X4
WWW.RIVAL4X4.COM