

Ford Ranger PX & PXII 4WD Front 6 Pot Brake Kit

INSTALLATION DIRECTION (LEFT HAND SIDE)

REF	DESCRIPTION	QTY
1	Slotted Rotor 6560089SGL ϕ 356mm	1
1	Slotted Rotor 6560089SGR ϕ 356mm	1
2	Banjo Bolt	2
3	Copper Gasket	4
4	Brake Hose 692016 (LH)	1
4	Brake Hose 692016 (RH)	1
5	Caliper Bolt (M12-L65)	4
6	Spring Washer (TH.= 3mm)	4
7	Caliper Assembly	2
8	Caliper Bleed Screw	4
9	Caliper Bracket Connecting Bolt (M14-P1.5)	O.E
10	Adjusting Washer (M14-TH. 0.5mm)	8
11	Washer (M14-TH. 2.5mm)	4
12	Brake Pad 6820022	1 SET
13	Tension Spring	2
14	Retainer	4
15	Retainer Fixed Bolt	4
16	Retainer Fixed Nut	4
17	Caliper Bracket	2
18	Door Sticker	
19	Bumper Sticker	
20		
21		
22		
23		

Tightening Torques

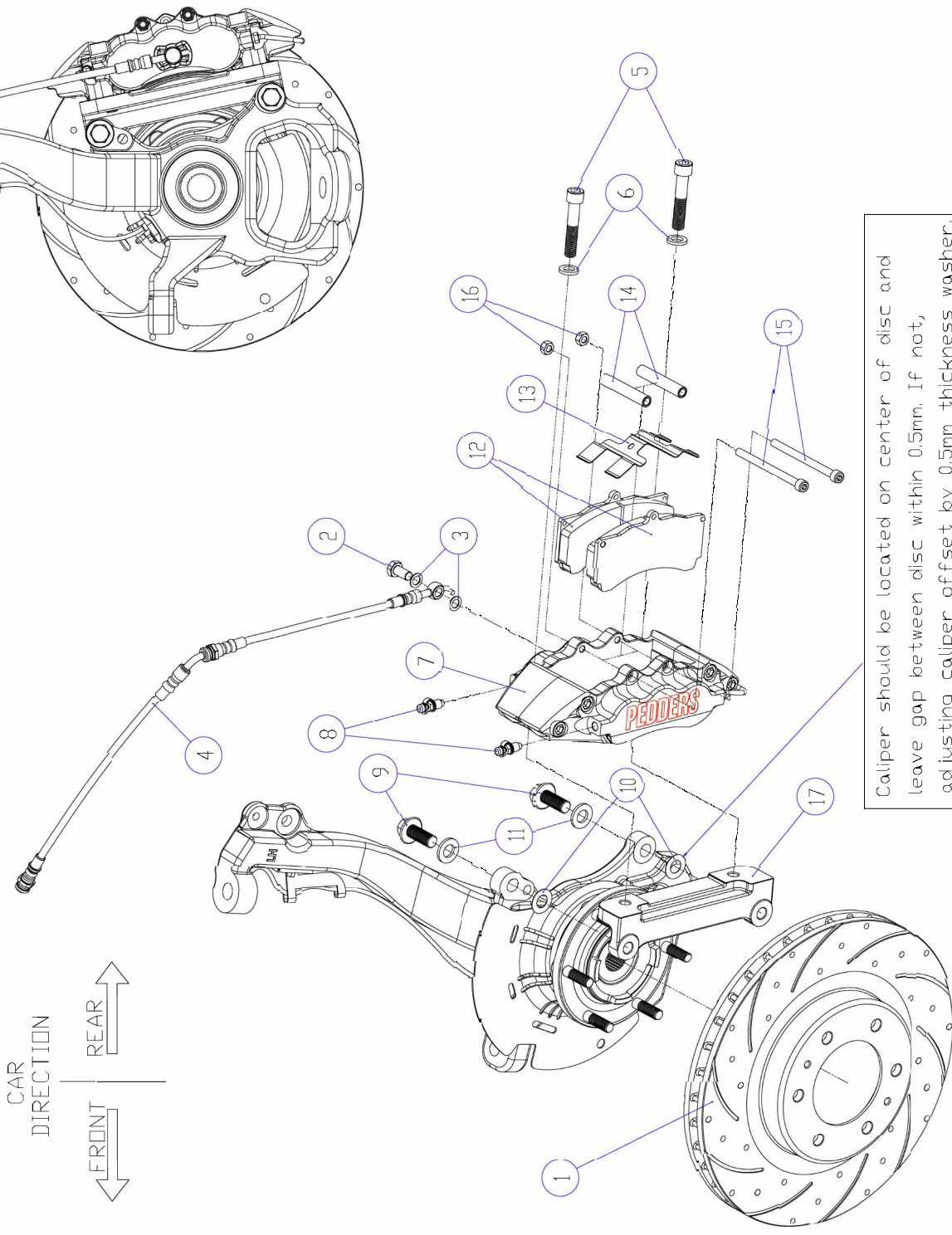
REF #	Torque (N-M)
2	25~27
5	65~68
8	7
9	O.E.STD.
15,16	17

Brake Rotor Wear

New	Min
Thickness 32mm	30mm

Brake Pad Wear

New Thickness 16mm	8mm
--------------------	-----



Caliper should be located on center of disc and leave gap between disc within 0.5mm. If not, adjusting caliper offset by 0.5mm thickness washer.

It's recommended to use *LOCTITE (NO.271) on bolts to fasten bracket and knuckle. *LOCTITE (NO.274)=Removable/High Strength Thread-locker