

# Alu-Cab<sup>TM</sup>

**MAKE IT BETTER**

---

## **FITMENT INSTRUCTIONS**

**ModCap Base - Shower Cube - Internal Mounting Kit**

**SH-BKT-BO-INT**

# Installation Instructions

---

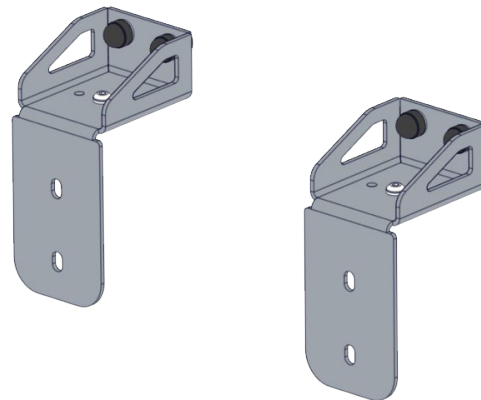
Installation and fitment instructions includes the tools required, fasteners included in the kit, and the hardware included in the kit.

Please follow the instructions and check installation steps with the images in this document.

Alu-Cab recommends that all sealing work is allowed to cure for 24 hours, after which you may drive the vehicle on normal paved roads. Before driving off-road with your Alu-Cab product or operating your roof conversion, an additional cure period of 48 hours is required.

Failure to follow these instructions will void your warranty. Please ensure that you follow the sealant manufacturers curing time as per their technical data sheet.

These times may differ slightly from the times we have recommended.



Service Enquiries email  
[queries@alu-cab.com](mailto:queries@alu-cab.com)

# Installation Instructions

## Shower Cube Internal BO Camper Mounting Kit

1.1

### Tools & Items Required

Socket wrench/Socket Spanner

13mm Socket

5mm Allen Key

1.3

### Hardware Required

ModCAP Camper Base

Shower Cubicle (SH-SC)

**NB** These products are excluded and will need to be purchased separately.

1.2

### Parts Supplied

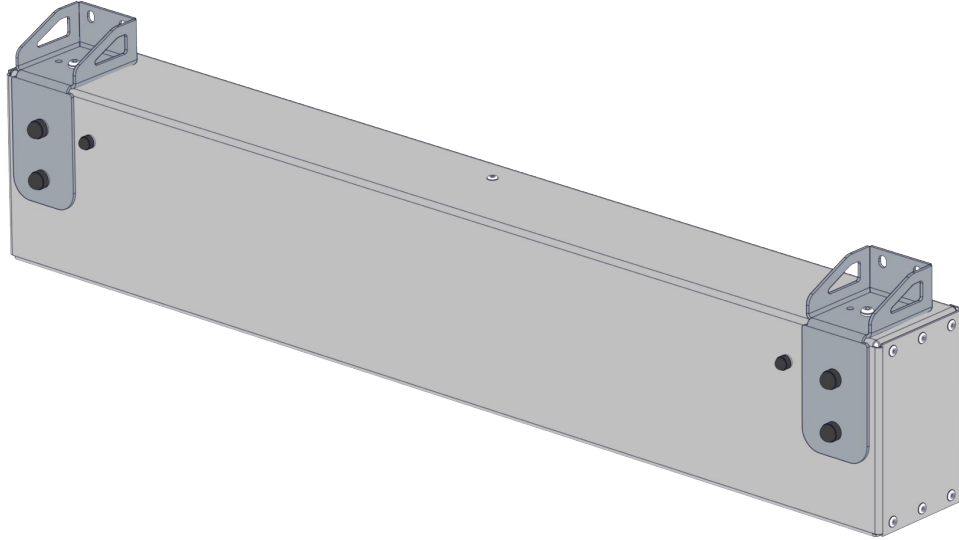
ITEM NO.	PART NUMBER	DESCRIPTION	QTY
1	SH-BKT-BO-INT-P001	SHOWER CUBE INTERNAL BO CAMPER MOUNTING BRACKET	2
2	HEX-M8x20	M8x20 HEX BOLT S/S	4
3	FW-M8	M8x16mm FLAT WASHER S/S - DIN 125	4
4	NY-M8	M8 NYLOC NUT S/S	4
5	NY-M6	M6 NYLOC NUT S/S	2
6	NCAP-M8	NUT CAP-o8mm	4
7	FW-M6	M6x12mm FLAT WASHER S/S - DIN 125	4
8	BHD-M6x20	M6x20 B/HD BOLT S/S	2
9	NCAP-M6	NUT CAP-o6mm	2

# Installation Instructions

## Shower Cube Internal BO Camper Mounting Kit

2

### General Assembly on Shower Cube

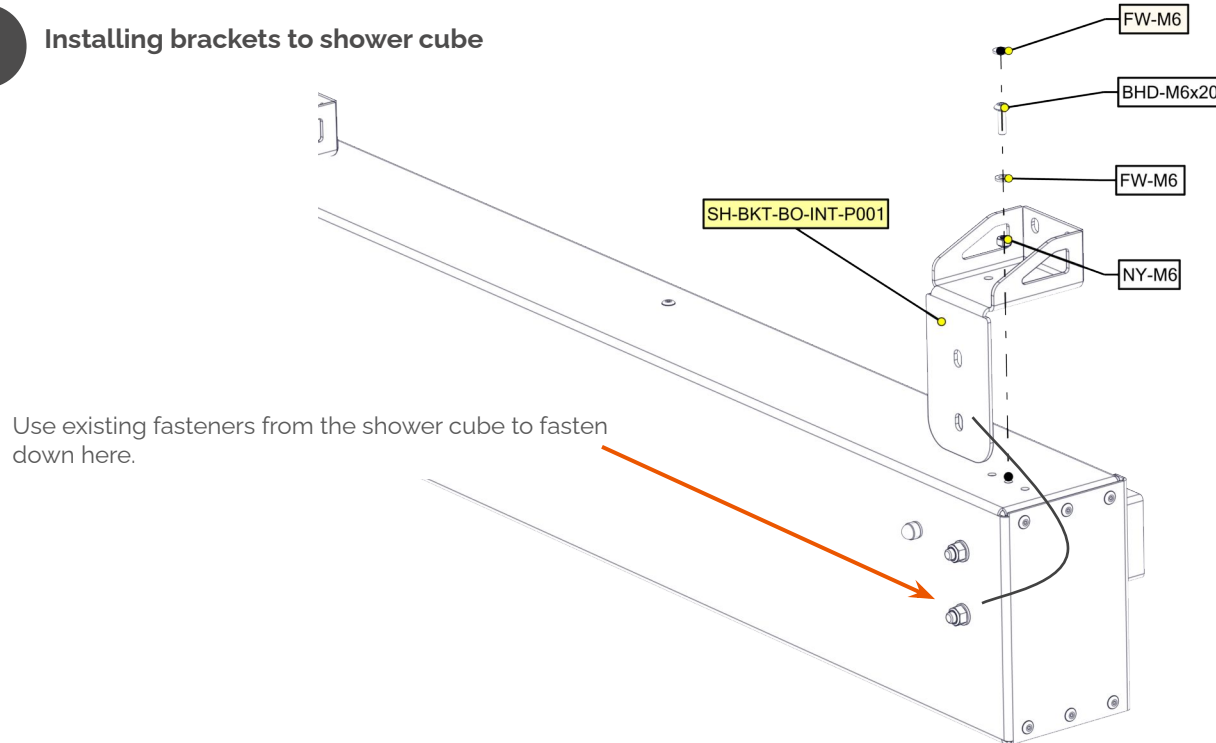


# Installation Instructions

## Shower Cube Internal BO Camper Mounting Kit

3

### Installing brackets to shower cube



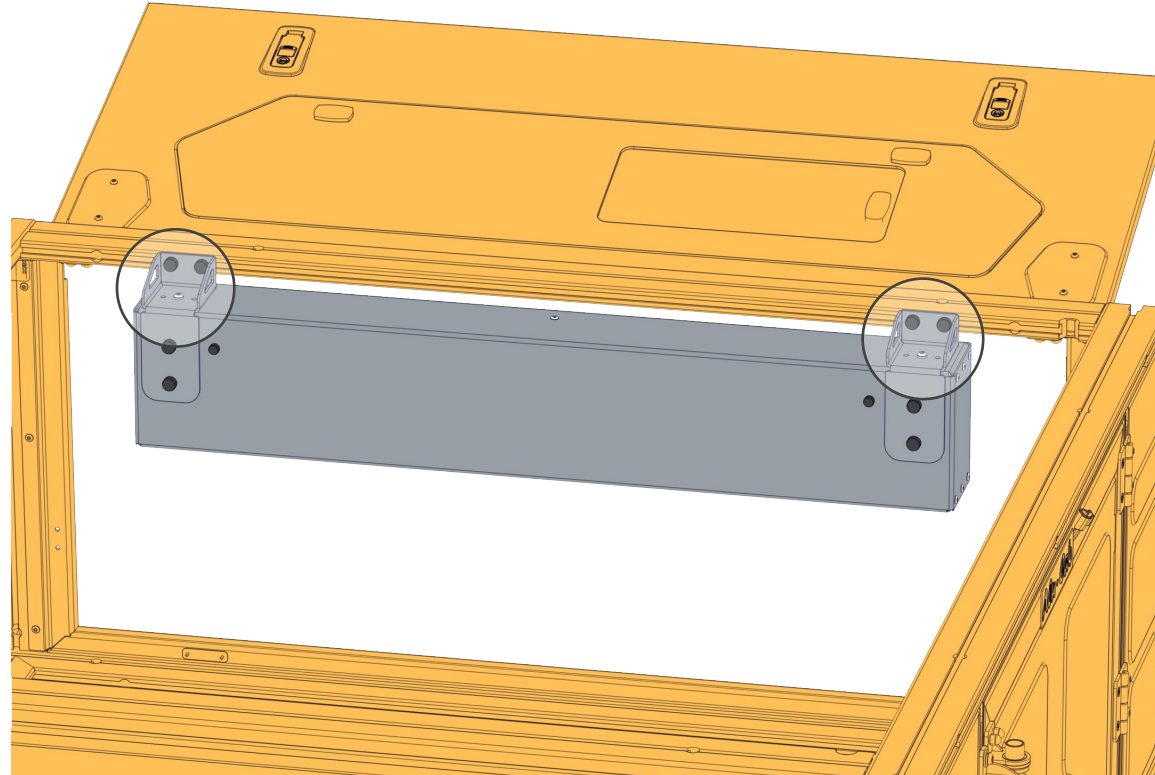
# Installation Instructions

## Shower Cube Internal BO Camper Mounting Kit

4

### Installing to ModCAP Camper - General Assembly

- I. The shower cube can be installed on the side nut slots as shown - Specifically at side door locations.
- II. See **page 7** for detail.



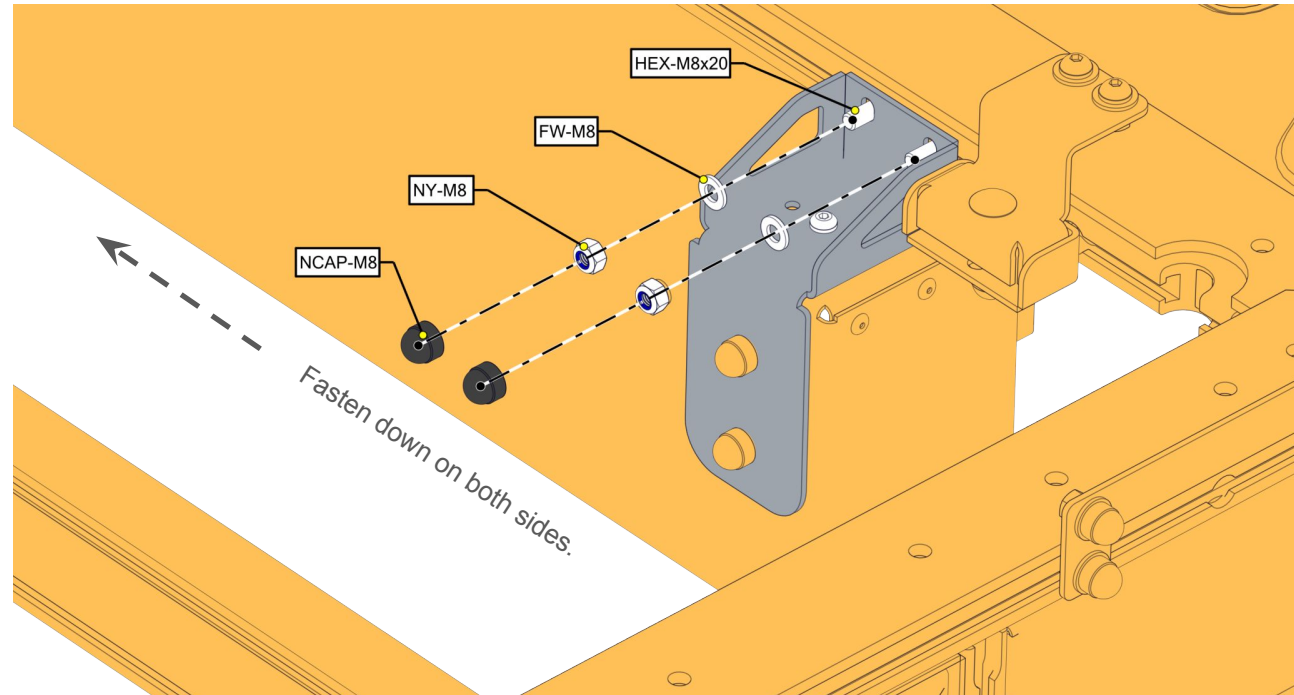
**Page 8** shows installation for  
Family Camper.

# Installation Instructions

## Shower Cube Internal BO Camper Mounting Kit

4.1

Installing to ModCAP  
Camper - Fastening  
to load bar

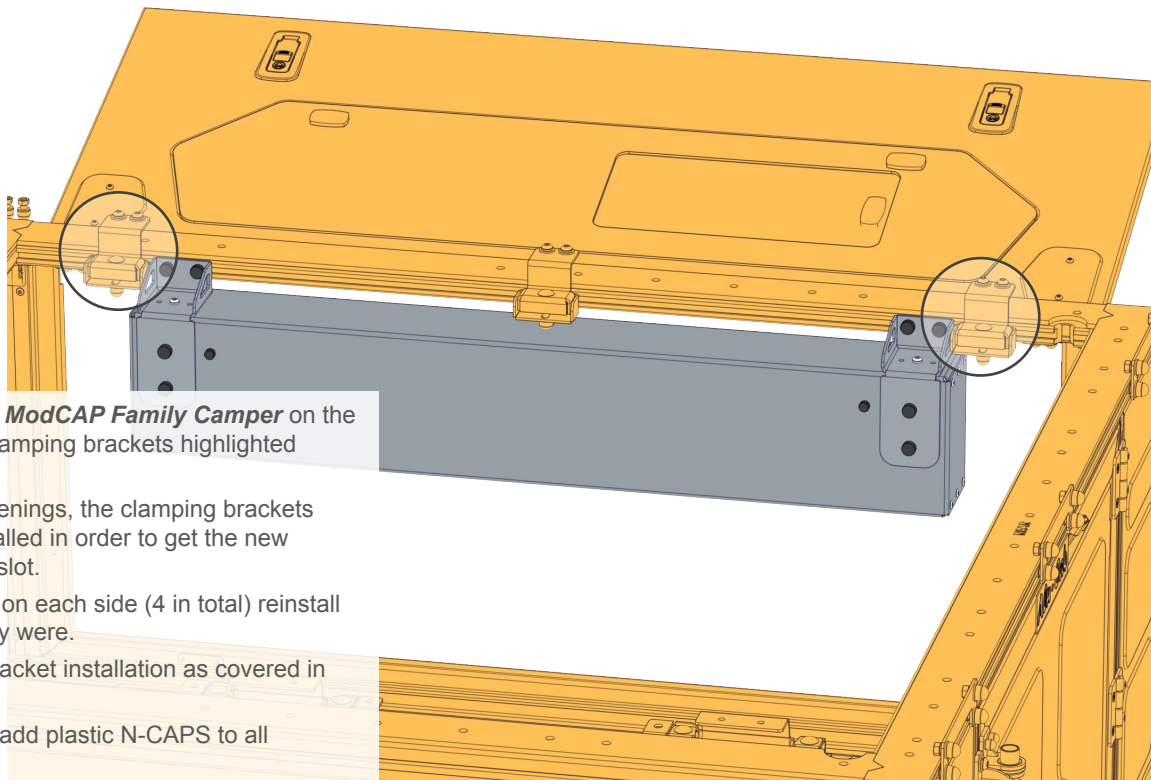


# Installation Instructions

## Shower Cube Internal BO Camper Mounting Kit

5

### Installing to ModCAP Camper with a Family Camper



- I. Install the **Shower cube** to a **ModCAP Family Camper** on the same side as the following clamping brackets highlighted above.
- II. If there aren't any nut slot openings, the clamping brackets shown will need to be uninstalled in order to get the new M8x20 Hex bolts into the nutslot.
- III. Once x2 bolts are in position on each side (4 in total) reinstall the clamping brackets as they were.
- IV. Continue the shower cube bracket installation as covered in section 4.1.
- V. Once everything is installed, add plastic N-CAPS to all appropriate nuts and bolts

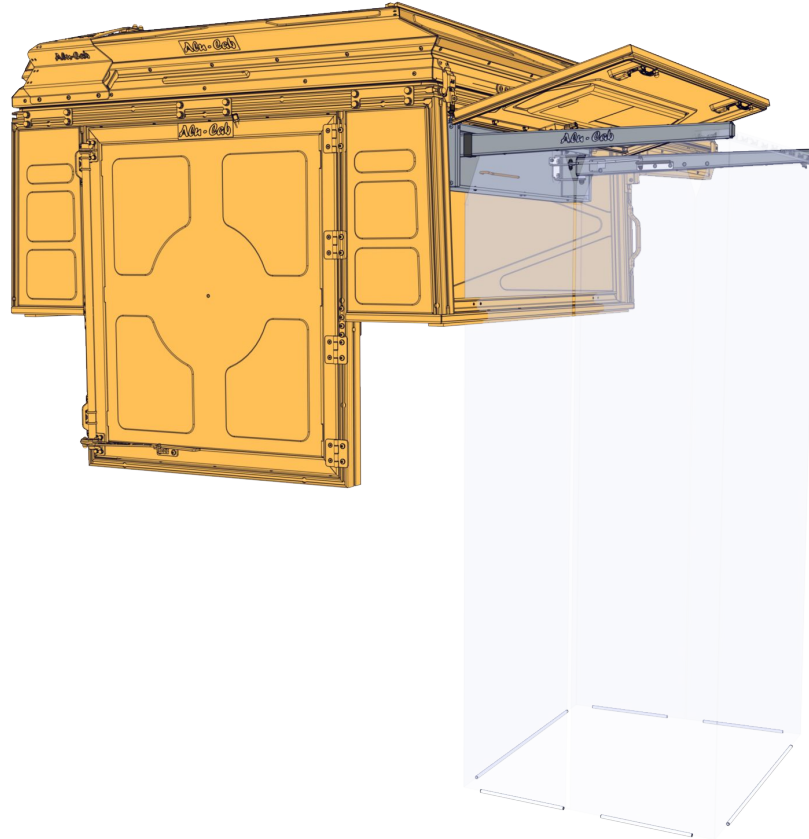


# Installation Instructions

## Shower Cube Internal BO Camper Mounting Kit

6

Installation Complete



# Disclaimer

---

All rights reserved. No part of this website may be reproduced, translated, stored in a retrieval system, or transmitted, in any form or by any means, electronic, mechanical, photocopying, recording or otherwise, without prior written permission of the owner.

## **Review all instructions information carefully before installation.**

Any damages, direct or incidental to the installer and/or property due to incorrect installation of any parts are the responsibility of the installer. Due to the various applications and fitment options available, the responsibility lies with the user to ensure all mounting points are secure and tight before every trip.

If unsure, consult with your Distributor regarding the operations of our products.

Users are advised to be mindful of the load they are carrying and drive in accordance with road conditions.

## **WARNING**

Always wear appropriate PPE (Personal protection equipment) when fitting our products. Although the mounting kit is designed to be DIY, if you have any doubts or concerns, contact an accredited fitment centre to carry out the work. Alu-Cab will not be liable for any injury to persons, and/or damage to products and/or vehicles.

While Alu-Cab Holdings takes reasonable measures to ensure that the contents of this Website are accurate and complete, Alu-Cab Holdings makes no representations or warranties, whether express or implied, as to the quality, timeliness, operation, integrity, availability or functionality of this Website or as to the accuracy, completeness or reliability of any information on this Website. Alu-Cab Holdings reserves the right to make changes, corrections and/or improvements to the information and to the products and programs described in such information, at any time without notice.

Alu-Cab Holdings will use reasonable endeavours to maintain the availability of the Website, except during scheduled maintenance periods, and reserves the right to discontinue providing the Website or the service or any part thereof with or without notice to you. Any person who accesses this Website or relies on this Website or on the information contained in this Website does so at his or her own risk.

Occasionally, at our discretion, we may include or offer third-party products or services on our website. These third-party sites have separate and independent privacy policies. We therefore have no responsibility or liability for the content and activities of these linked sites. Nonetheless, we seek to protect the integrity of our site and welcome any feedback about these sites.