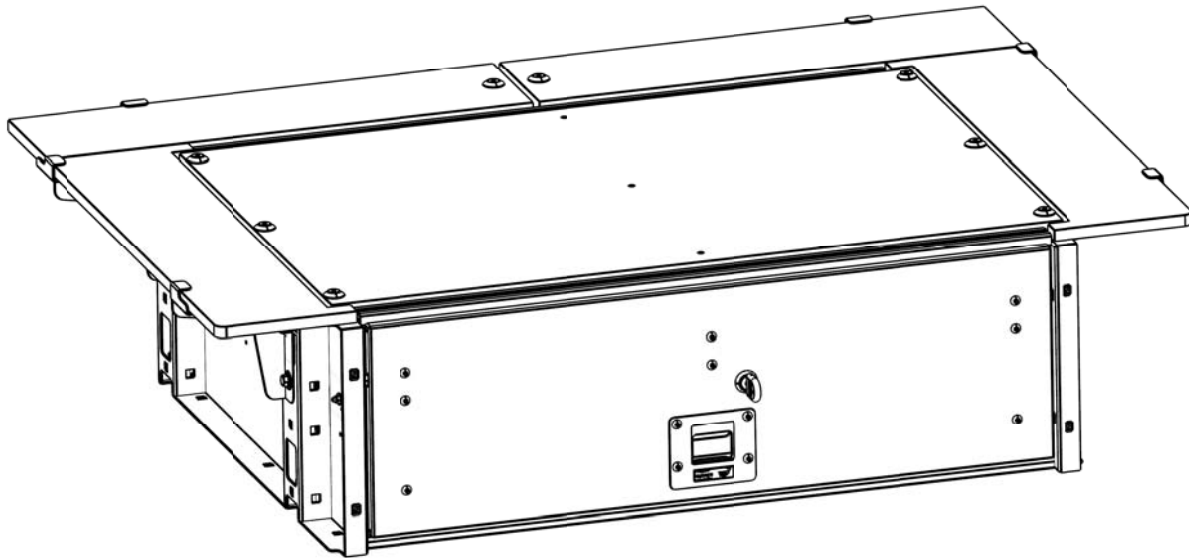


**INSTALL TIME: 30 mins**

Thank you for purchasing a Front Runner Storage System.

This Storage System is made up of the following components:

- 1. A Drawer System - SSDR011**
- 2. A Vehicle Specific Deck Set - SSDS102**

Before you start, take a moment to familiarize yourself with these Fitting Instructions and all the components received. Depending on the vehicle not all components received will be used. Refer to Page 2 for a list of all the components and quantities if required.

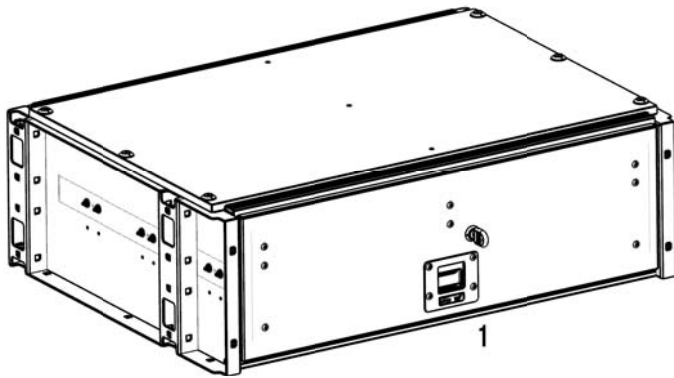
IMPORTANT WARNING!

IT IS CRITICAL THAT ALL FRONT RUNNER PRODUCTS BE PROPERLY AND SECURELY ASSEMBLED AND ATTACHED TO YOUR VEHICLE. IMPROPER ATTACHMENT COULD RESULT IN AN AUTOMOBILE ACCIDENT, AND COULD CAUSE SERIOUS BODILY INJURY OR DEATH TO YOU OR TO OTHERS. YOU ARE RESPONSIBLE FOR ASSEMBLING AND SECURING ALL FRONT RUNNER PRODUCTS TO YOUR VEHICLE, CHECKING THE ATTACHMENTS PRIOR TO USE, AND PERIODICALLY INSPECTING THE PRODUCTS FOR ADJUSTMENT, WEAR, AND DAMAGE. THEREFORE, YOU MUST READ AND UNDERSTAND ALL OF THE INSTRUCTIONS AND CAUTIONS SUPPLIED WITH YOUR FRONT RUNNER PRODUCT PRIOR TO INSTALLATION OR USE. IF YOU DO NOT UNDERSTAND ALL OF THE INSTRUCTIONS AND CAUTIONS, OR IF YOU HAVE NO MECHANICAL EXPERIENCE AND ARE NOT THOROUGHLY FAMILIAR WITH THE INSTALLATION PROCEDURES, YOU SHOULD HAVE THE PRODUCT INSTALLED BY A PROFESSIONAL INSTALLER OR OTHER QUALIFIED PERSONNEL.

1 GET ORGANIZED...

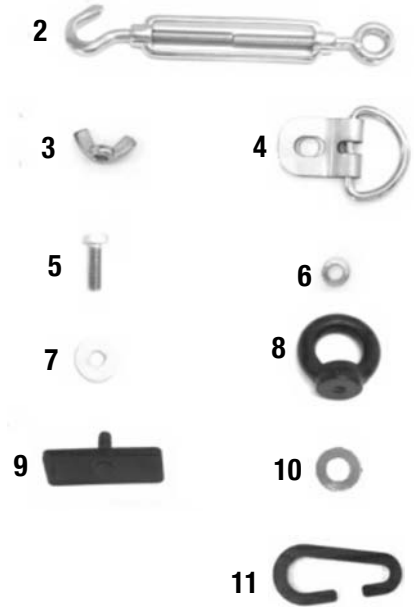
Here is what you are looking at for SDDR011:

Item #	Quantity	Description
1	1	DRAWER SYSTEM
2	4	TURN BUCKLE
3	4	M6 WING NUT
4	4	D-RING
5	4	M6 x 20 HEX BOLT
6	4	M6 SPRING WASHER
7	4	M6 x 19 x 1 FLAT WASHER
8	4	M6 EYE NUT
9	4	M6 STUD PLATE
10	4	NYLON WASHER
11	2	C-HOOK - 60 mm



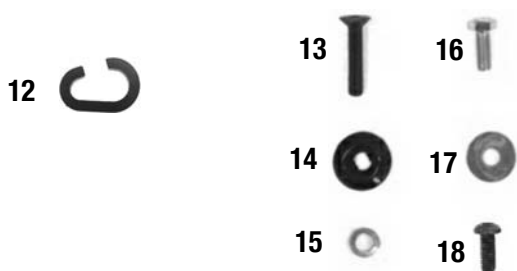
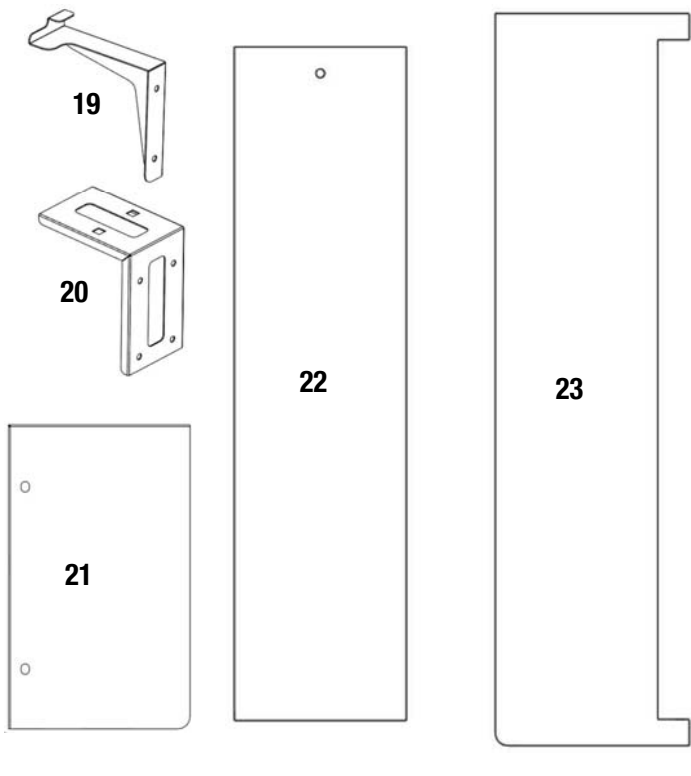
You will need:

- 10 mm Flat & Socket Wrench
- 4 mm Hex Key
- a Friend
- Measuring Tape



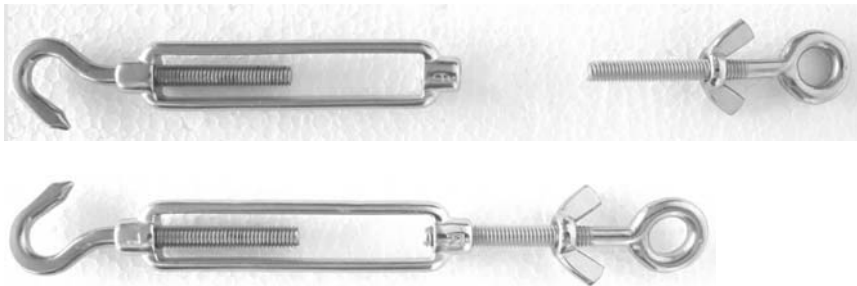
Here is what you are looking at for SSDS102:

Item #	Quantity	Description
12	2	C-HOOK - 37mm
13	2	M6 x 25 COUNTERSUNK BOLT
14	2	M6 FINISHING WASHER
15	8	M6 SPRING WASHER
16	8	M6 x 16 HEX BOLT
17	8	M6 x 19 x 1 FLAT WASHER
18	4	M6 x 16 BUTTON HEAD BOLT
19	6	SIDE SUPPORT - 3 LEFT, 3 RIGHT
20	1	REAR SUPPORT
21	2	FRONT FACE - 1 LEFT, 1 RIGHT
22	2	REAR DECK - 1 LEFT, 1 RIGHT
23	2	SIDE DECK - 1 LEFT, 1 RIGHT

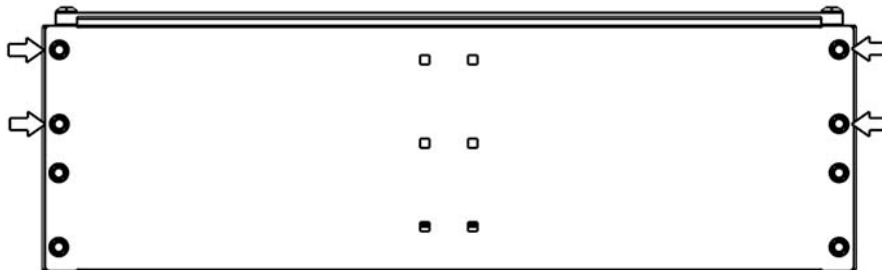


2 PREPARE FOR INSTALLATION

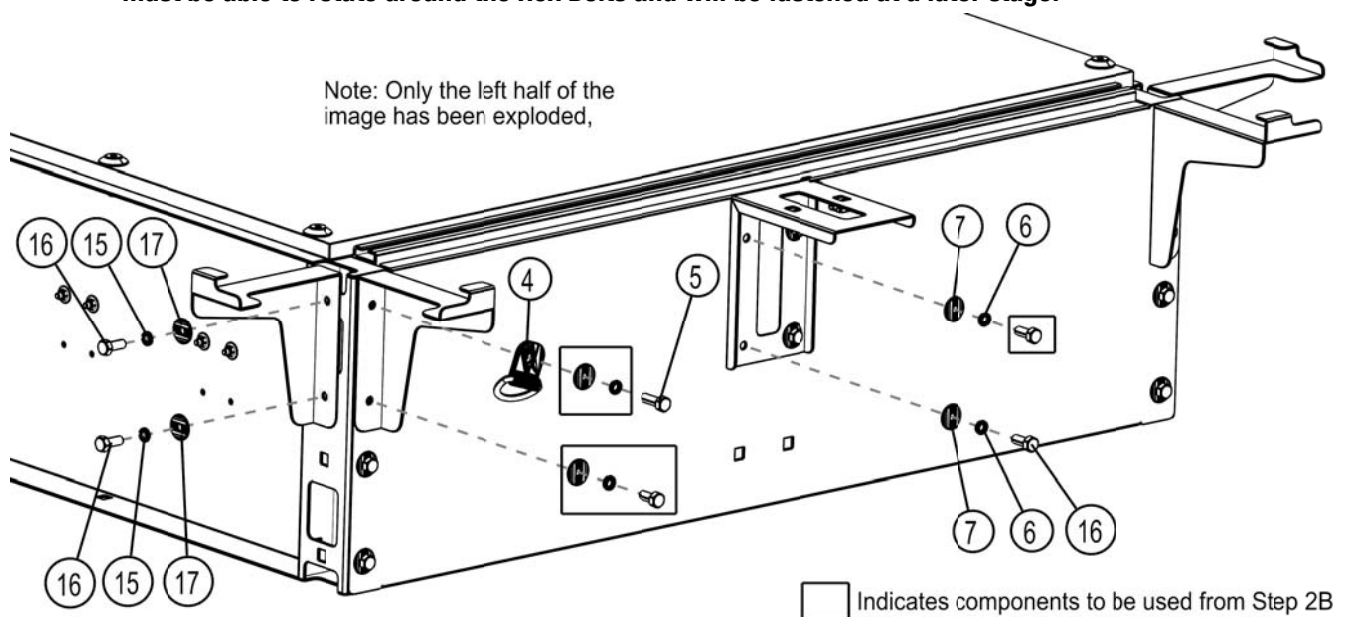
- (A) Loosen the round end of the four Turn Buckles (Item 2) supplied with SSDR011 and assemble a M6 Wing Nut (Item 3) as shown. Reassemble the Turn Buckle.



- (B) Looking at the rear of the Drawer System, remove the bolts as indicated by the arrows. Keep the bolts and washers safe as they will be used in Step 2C.

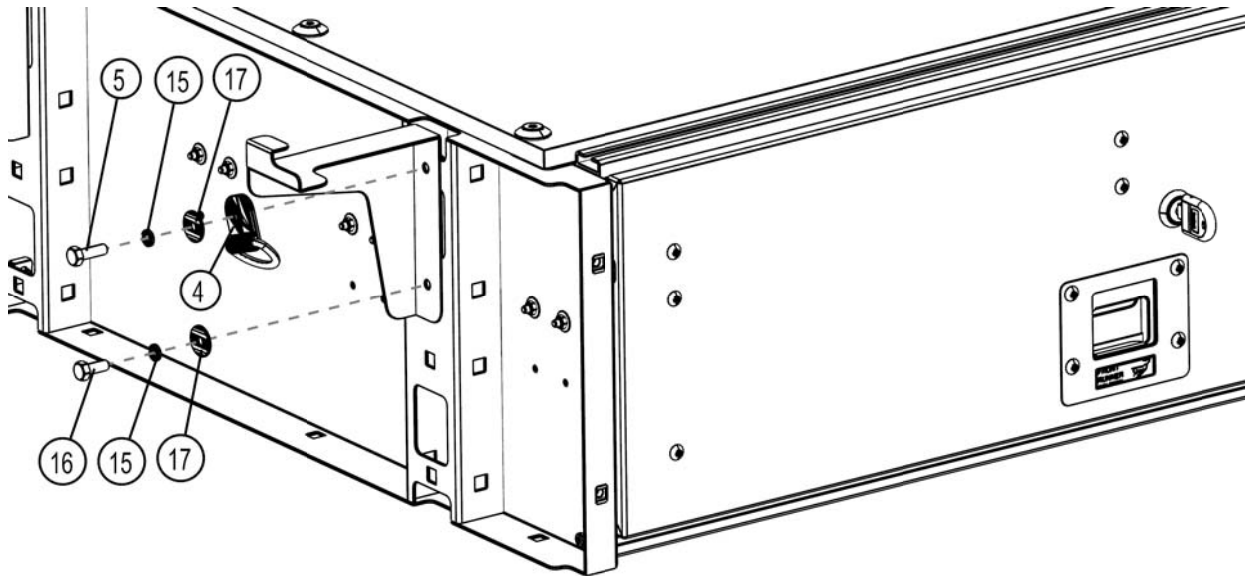


- (C) Working at the rear of the Drawer System, assemble the Rear Support, left and right hand Side Supports with D-rings (Items 4, 19, 20) using the fasteners as shown below. Do not fully tighten the D-rings as they must be able to rotate around the Hex Bolts and will be fastened at a later stage.

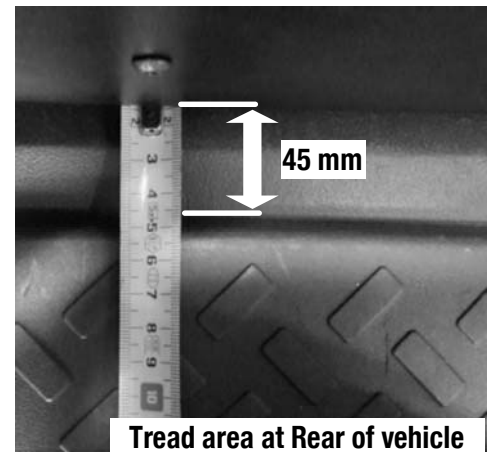


2 PREPARE FOR INSTALLATION CONT...

- (D) Working on either side of the Drawer System, attached the remaining Side Supports and D-rings as shown.

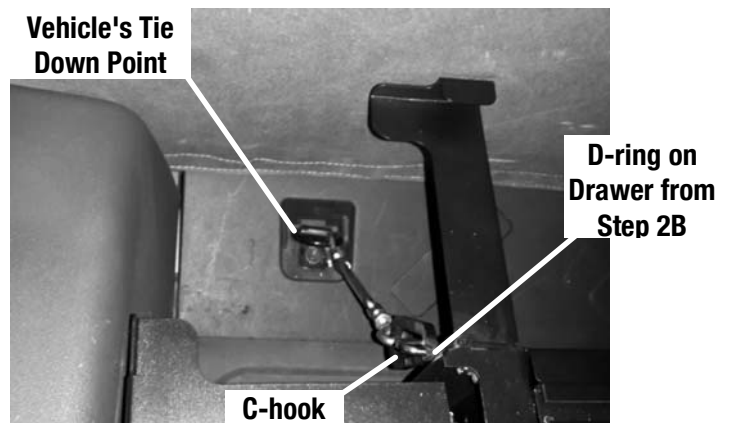


- (E) Place the Drawer System into the vehicle, taking care not to damage the vehicle. Position the Drawer 45 mm in front of the edge of the plastic tread section as shown and center the Drawer left to right.



Tread area at Rear of vehicle

- (F) Loosely secure the rear of the Drawer to the tie down points found behind the passenger rear seats using the two C-hooks and two Turnbuckles (Items 2 & 11) as shown. Ensure that the Wing Nuts from Step 2A are at the top.



2 PREPARE FOR INSTALLATION CONT...

(G) Referring to Step 2F, loosely secure the front of the Drawer System to the tie down points found at the rear of the vehicle using the remaining Turnbuckles and the two 37 mm C-hooks (Item 12).

(H) Tighten all the Turnbuckles making sure that the Drawer System remains centered left to right and 45 mm in from the plastic tread section. Tighten the Wing Nuts and bolts securing the D-rings to the Drawer System.

(I) Assemble the two Front Faces (Item 21) to the side of the Drawer System using the four M6 x16 Button Head Bolts (Items 18). Place the Rear and Side Decks (Items 22 & 23) into position. Secure the center of the Rear Decks to the Rear Support (Item 20) using the two M6 x 25 Countersunk Bolts and two M6 Finishing Washers (Items 13 & 14) supplied. The Side Decks are "self locking".



(J) Congratulations, you have completed your installation. Take a step back and admire your work. Good Job!

3 INSTALL OTHER VEHICLE AND RACK ACCESSORIES

(A) Now's the time to visit your favorite Front Runner dealer in person or online.