



FITMENT INSTRUCTIONS

Base deck system to Suzuki Jimny Gen4

Installation Instructions

Preliminary information

Installation and fitment instructions including tools required, fasteners, kit, and the hardware..

Please follow the instructions and check installation actions with the images in this document.



Service Enquiries email
queries@alu-cab.com

Installation Instructions

Base Deck– Tools, Fasteners & Hardware

1.1

Tools & Items Required

10mm Spanner / Wrench / Socket
4mm Allen Key
14mm Spanner / Wrench / Socket

M8 x 20mm Hex Bolt	4
M8 Flat Washer	4
M8 Nyloc nut	4

1.2

Fasteners Supplied (included with Side Boxes)

M6 x 20mm Countersunk Bolts	4
M6 x 16mm Button-head bolts	2
M6 Flat Washer	2
M6 Spring Washer	2
M6 Nyloc nut	2

Installation Instructions

Base Deck – Tools, Fasteners & Hardware

1.3

Hardware Required

Front Mounting Bracket	1
Rear Mounting Bracket	1
Left supporting Bracket	1
Right supporting Bracket	1
Wooden base deck	1
Gas Struts	2
Load bars	2
Load bar end-caps	2

Installation Instructions

Base Deck – Rear seat removal

2.1



Remove the base section of the rear seat by pulling the seat upwards in the front two corners until the seat is unlatched.

2.2

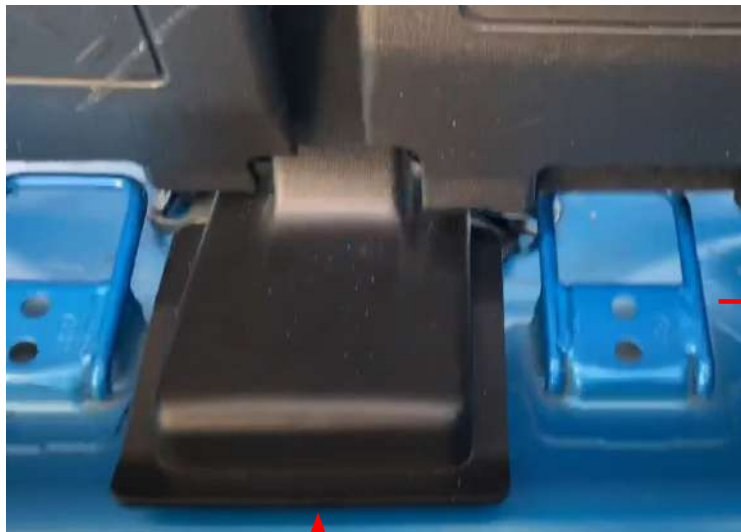


Pull the seats forward until seat is fully detached from the vehicle.

Installation Instructions

Base Deck – Rear seat removal

2.3



Remove the center seat bolt cover by unclipping the front from the rear cover.

Installation Instructions

Base Deck – Rear seat removal

2.4



Remove the two center seat mounts
using a 14mm wrench



Installation Instructions

Base Deck – Rear seat removal

2.5



Outer seat bolt plastic cover

Remove the plastic covers by unclipping them from the vehicle.



2.6



Remove the two outer seat mounts (Front and rear) using a 14mm wrench.

Installation Instructions

Base Deck – Rear seat removal

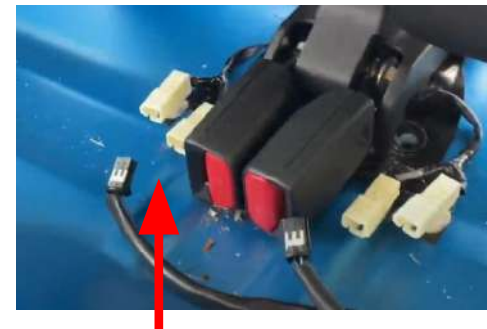
2.7



Remove the two center seat mounts using a 14mm wrench.



2.8



If your vehicle has rear seat belt sensors, unplug the sensors.

Installation Instructions

Base Deck – Rear seat removal

2.9



Front Bolt

Remove the two outer seat mounts using a 14mm wrench

2.10



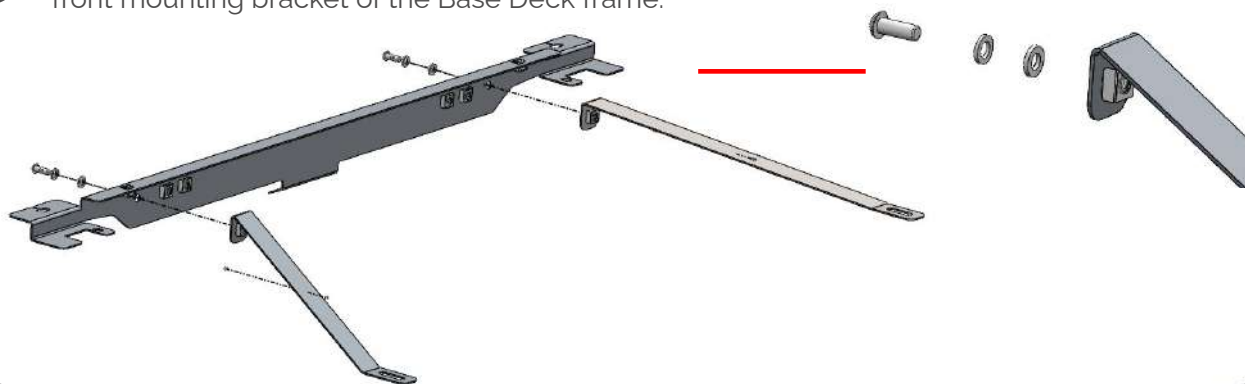
Rear Bolt

Remove the two outer seat mounts using a 14mm wrench

Installation Instructions

3.1

Using the M6 Button-head bolt, the spring washer and the flat washer to install the left and right supporting bracket to the front mounting bracket of the Base Deck frame.



3.2

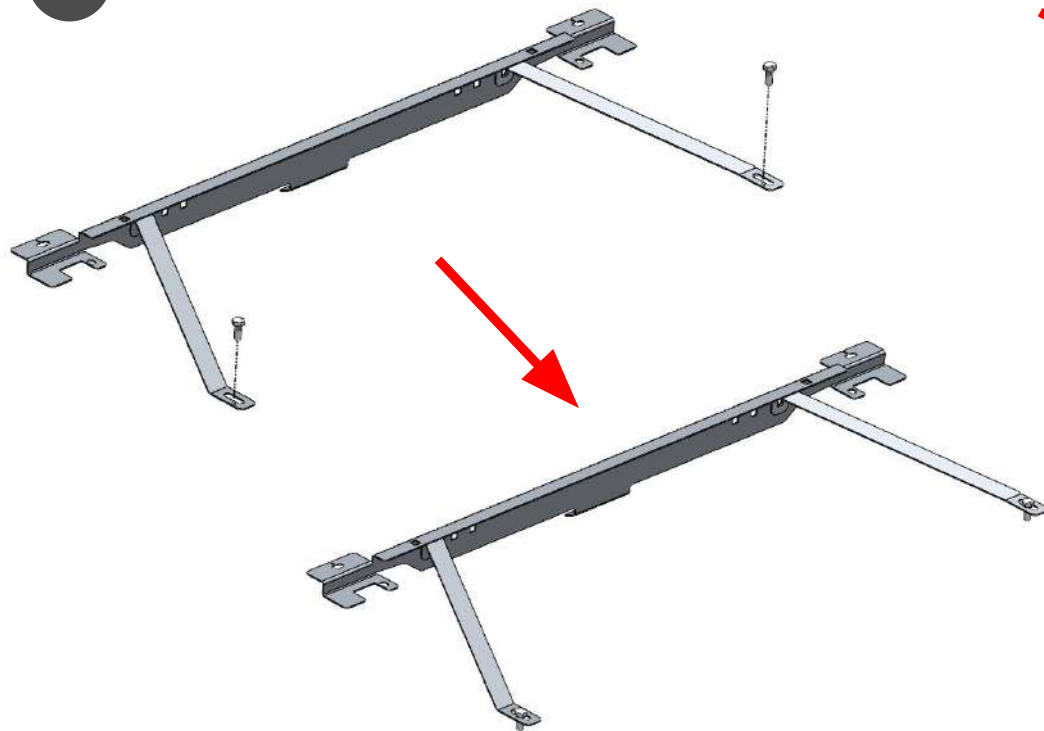
Using M6 Button-head bolt, the flat washer and M6 Nyloc nut, fasten the front bracket to the vehicle.



Installation Instructions

4

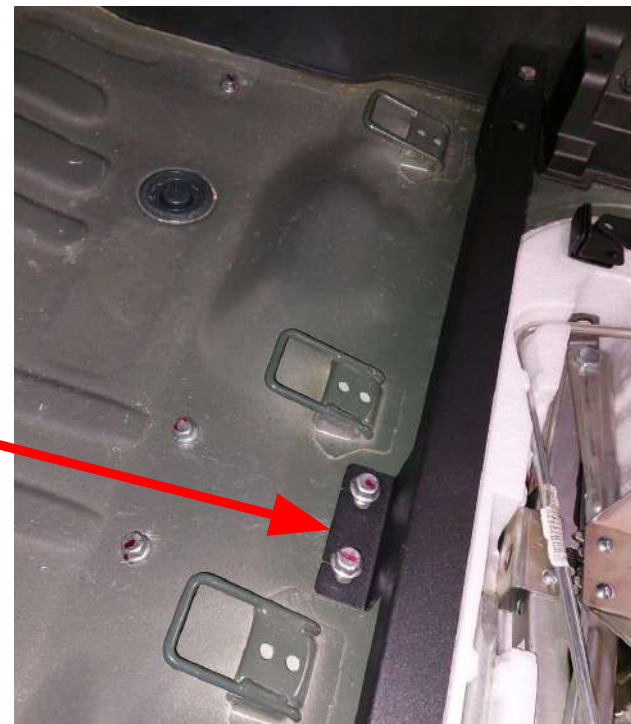
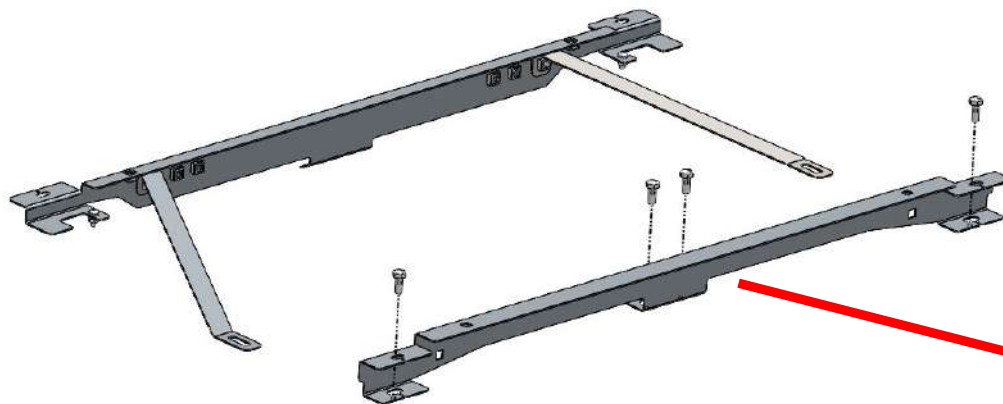
Use the standard front seat bolts to fasten the supporting brackets to the vehicle.



Installation Instructions

5

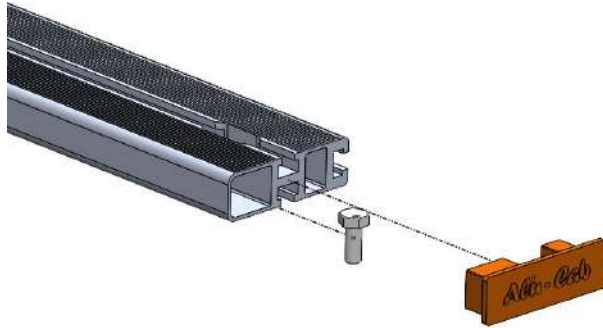
Use the standard rear seat bolts to fasten the rear bracket to the vehicle.



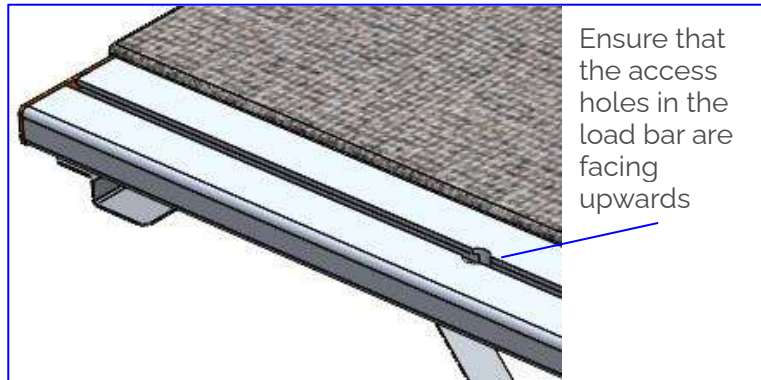
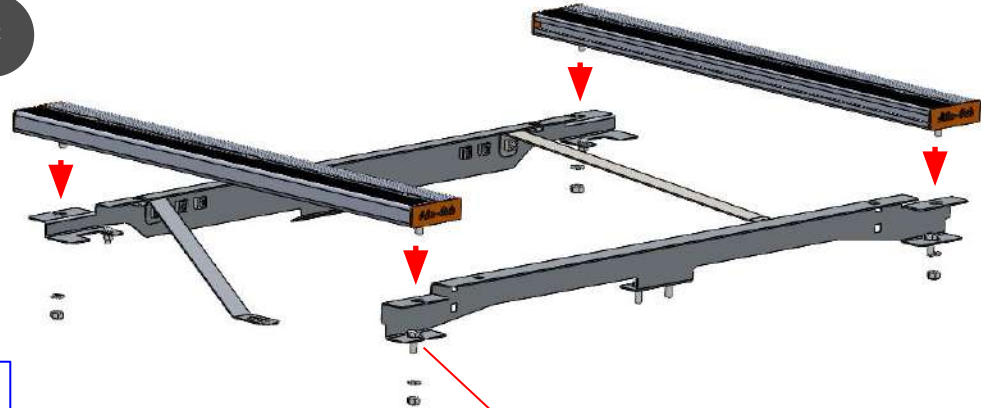
Installation Instructions

6.1

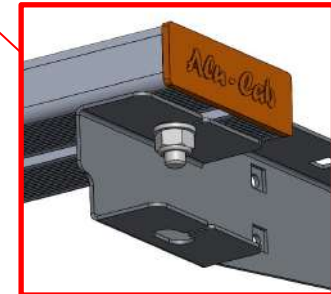
Slid the 2- M8 x 20mm Hex bolt into the load bars and place the load bar end caps on the load bars.



6.2



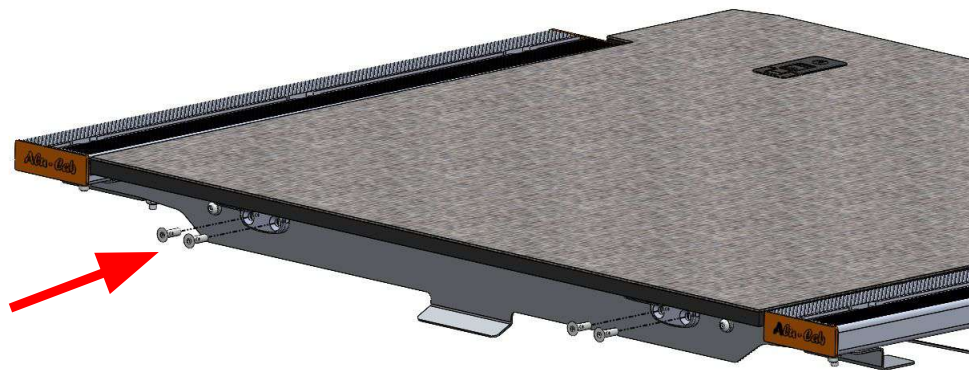
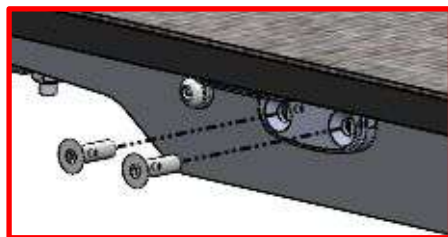
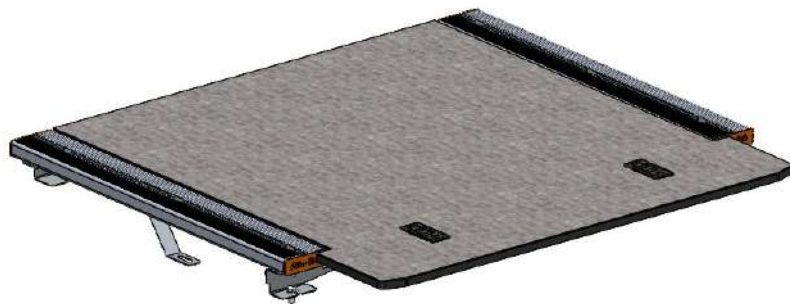
Place the load bar securing bolts through the holes in the base brackets and tighten them using the M8 Flat Washer and the M8 Nylock nut.



Installation Instructions

7

Place the wooden base deck on top of the frame and line up the hinges with the holes in the front bracket. Fasten the hinges using a 4mm allen key and the M6 X 35 countersunk bolts.



Installation Instructions

8

Lift the base deck and attach the gas struts by pushing them over the ball fitting in the wooden base and rear fastener bracket until you hear a click to ensure that they are secured in place.



Disclaimer

All rights reserved. No part of this website may be reproduced, translated, stored in a retrieval system, or transmitted, in any form or by any means, electronic, mechanical, photocopying, recording or otherwise, without prior written permission of the owner.

Review all instructions information carefully before installation.

Any damages, direct or incidental to the installer and/or property due to incorrect installation of any parts are the responsibility of the installer. Due to the various applications and fitment options available, the responsibility lies with the user to ensure all mounting points are secure and tight before every trip.

If unsure, consult with your Distributor regarding the operations of our products.

Users are advised to be mindful of the load they are carrying and drive in accordance with road conditions.

WARNING

Always wear appropriate PPE (Personal protection equipment) when fitting our products. Although the mounting kit is designed to be DIY, if you have any doubts or concerns, contact an accredited fitment centre to carry out the work. Alu-Cab will not be liable for any injury to persons, and/or damage to products and/or vehicles.

While Alu-Cab Holdings takes reasonable measures to ensure that the contents of this Website are accurate and complete, Alu-Cab Holdings makes no representations or warranties, whether express or implied, as to the quality, timeliness, operation, integrity, availability or functionality of this Website or as to the accuracy, completeness or reliability of any information on this Website. Alu-Cab Holdings reserves the right to make changes, corrections and/or improvements to the information and to the products and programs described in such information, at any time without notice.

Alu-Cab Holdings will use reasonable endeavours to maintain the availability of the Website, except during scheduled maintenance periods, and reserves the right to discontinue providing the Website or the service or any part thereof with or without notice to you. Any person who accesses this Website or relies on this Website or on the information contained in this Website does so at his or her own risk.

Occasionally, at our discretion, we may include or offer third-party products or services on our website. These third-party sites have separate and independent privacy policies. We therefore have no responsibility or liability for the content and activities of these linked sites. Nonetheless, we seek to protect the integrity of our site and welcome any feedback about these sites.