



**Fitment Instruction**

**Canopy Cupboard Fitment Instructions**

# Installation Instructions

---

## Preliminary information

Installation and fitment instructions includes the tools required, fasteners included in the kit, and the hardware included in the kit.

Please follow the instructions and check installation steps with the images in this document.

Alu-Cab recommends that all sealing work is allowed to cure for 24 hours, after which you may drive the vehicle on normal paved roads. Before driving off-road with your Alu-Cab product or operating your roof conversion, an additional cure period of 48 hours is required.

Failure to follow these instructions will void your warranty. Please ensure that you follow the sealant manufacturers curing time as per their technical data sheet.

These times may differ slightly from the times we have recommended.



Service Enquiries email  
[queries@alu-cab.com](mailto:queries@alu-cab.com)

# Installation Instructions

---

1.1

## Tools & Items Required

13mm Ring Spanner/Socket  
Ratchet

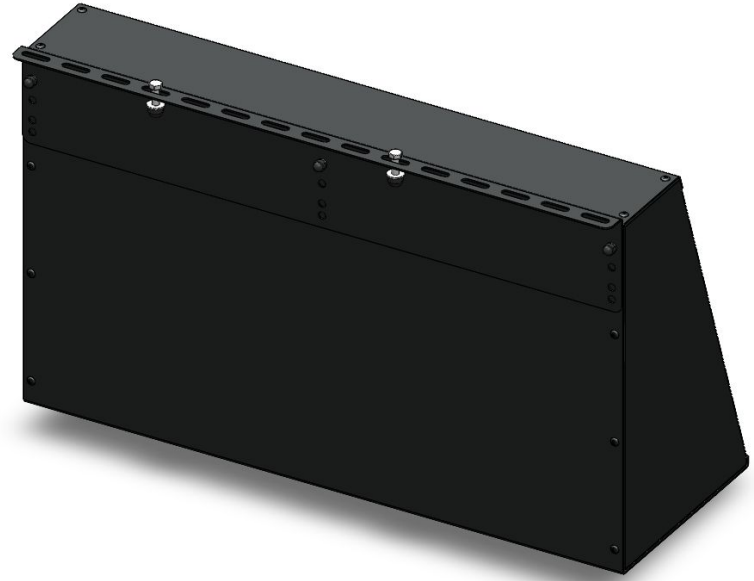
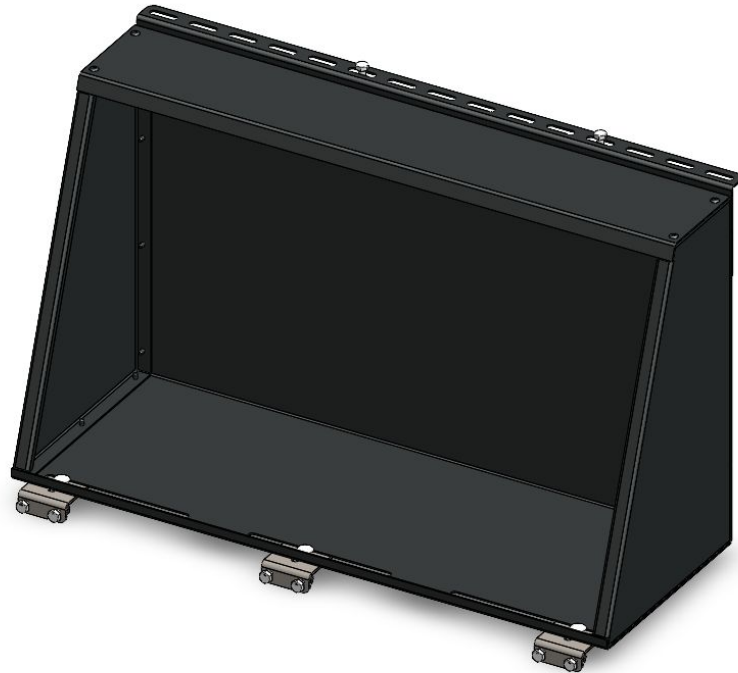
1.2

## Fasteners Supplied

Canopy Cupboard	1
Rev C MOUNTING BRACKET	1
BOTTOM MOUNTING BRACKET	3
M8 FLAT WASHER	11
N8 Nyloc Nut	11
M8x20 CUP SQUARE BOLT	3
M8x20 Hex Head Bolt	6
M6 Flat Washer	6
M6x20 Button Head Screw	3
M6 Nyloc Nut	3
M8x35 HEX BOLT	2
M8 Nut Cap Plastic Nut Cap	11
M6 Nut Cap Plastic Nut Cap	3

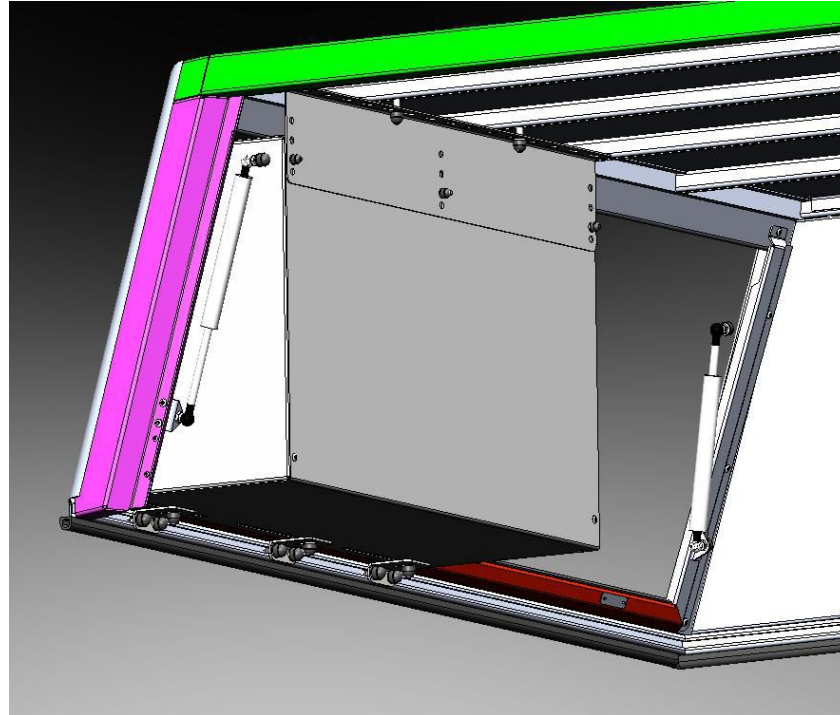
# Installation Instructions

---



# Assembled Canopy Cupboard

---

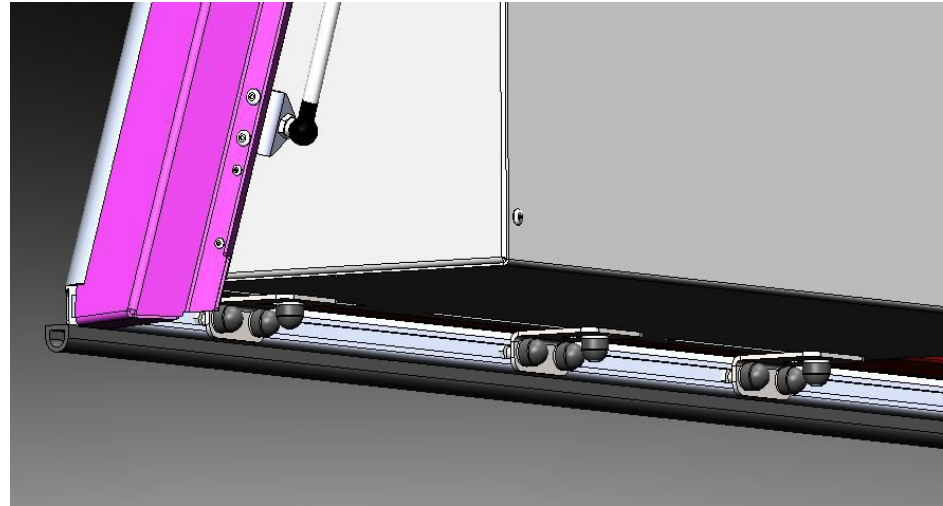


# Bottom Brackets

---

Bottom Brackets Assembled using M8 Hex Bolts into the nut Slot and M8 Cup square bolts into the canopy Cupboard.

There are slots to adjust the position of the cupboard brackets to clear the canopy load bin brackets.

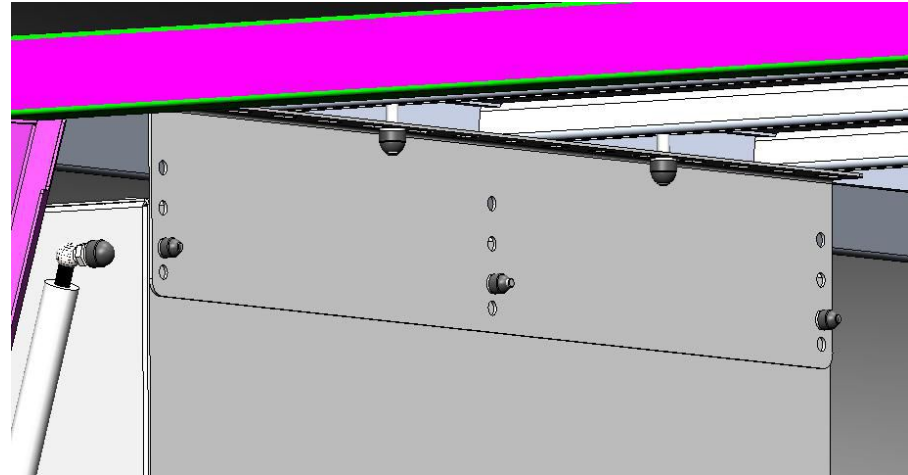


# Top Bracket

---

Top Bracket Assembled. Use M6x20 Button Head screws to bolt Bracket to the Cupboard and M8 Bolt Bracket to the Canopy Frame roof as shown. Bracket is height adjustable to suit multiple canopies.

Remember to fit plastic nut caps over the nyloc nuts



# Assembled Canopy Cupboard

---



Photo of Canopy cupboard fitted into canopy.