

# FITMENT INSTRUCTIONS

**Alu-Cab™**



## Window Box Kitchen Kit Fitment Instructions for Landcruiser 76 series

All rights reserved. No part of this document may be reproduced, translated, stored in a retrieval system, or transmitted, in any form or by any means, electronic, mechanical, photocopying, recording or otherwise, without prior written permission of the owner.

Review all instructions information carefully before installation.

Any damages, direct or incidental to the installer and/or property due to incorrect installation of any parts are the responsibility of the installer. Due to the various applications and fitment options available, the responsibility lies with the user to ensure all mounting points are secure and tight before every trip. If unsure, consult with your Distributor regarding the operations of our products.

Users are advised to be mindful of the load they are carrying and drive in accordance with road conditions.

**DISCLAIMER**

**Alu-Cab**

# 76 Series Landcruiser Window Box Kitchen Kit Fitment – Tools, Fasteners & Materials

The tables below show the equipment, i.e. tools and fasteners required to install the side boxes to a Landcruiser 76 series.

## **1.1. Tools & Items Required:**

TOOLS
4 mm Allen key
10 mm spanner/socket
Ratchet (Optional)
Pop rivet gun

## **1.2 Fasteners supplied: (Included with Side Boxes)**

ITEM	QTY
M5 x 25 mm Button Head Bolt	5
M5 Nyloc Nuts	10
M5 Flat washers	10
4.8 x 10 mm Pop Rivets	18

## **1.3 Hardware Required:**

ITEM	QTY
Kitchen Kit Backing Plate	1
Kettle/Pot Holder	2
Glass/Tumbler Holder	1
Salt/Pepper Shaker Holder	1
Knife Holder	1



### **WARNING**

Always wear appropriate PPE ( Personal protection equipment) when fitting this product. Although the mounting kit is designed to be DIY, if you have any doubts or concerns, contact an accredited fitment centre to carry out the work. Alu-Cab will not be liable for any injury to persons, and/or damage to products and/or vehicles.

Should you experience any problems, please contact us so that we can assist you.

Enquiries: [queries@alu-cab.co.za](mailto:queries@alu-cab.co.za)  
Tel: +27 21 703 3028

**IMPORTANT  
NOTICE**



Please ensure to lay out all parts provided on a table or flat surface in order to check that all required parts are accounted for and prevent potential frustration at a later stage.

### LHS KITCHEN KIT:



### STEP 1:

Please confirm that all the required parts and fasteners are accounted for and lay them out on a table or flat surface.

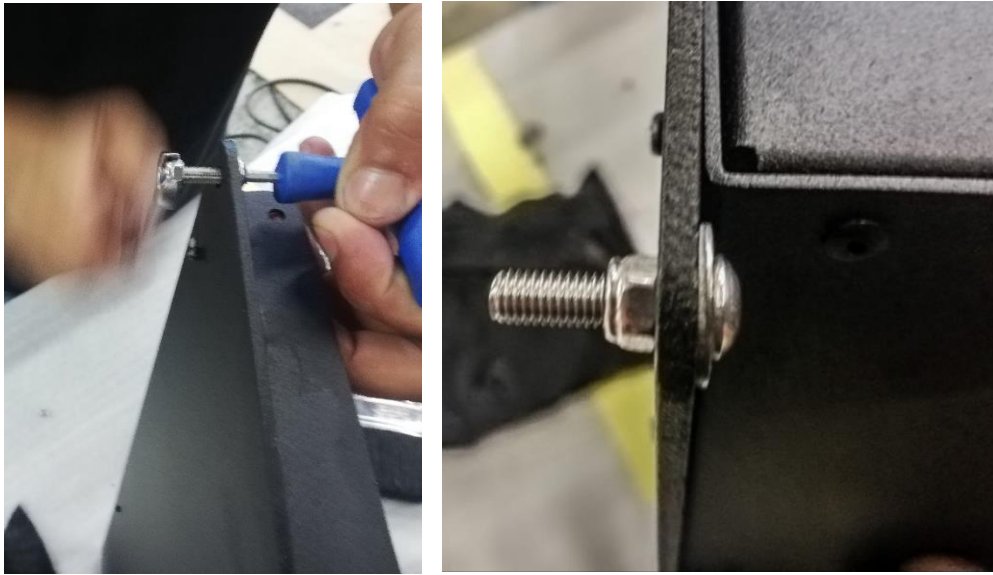


Should you experience any problems, please contact us so that we can assist you.

Enquiries: [queries@alu-cab.co.za](mailto:queries@alu-cab.co.za)  
Tel: +27 21 703 3028

## **STEP 2:**

Fasten a M5x25mm bolt with flat washer and nut to each of the holes of the backing plate as seen below.



Ensure to leave +/- 1mm of play on each of the bolts as this will allow the backing plate to be fitted more easily.

## **STEP 3:**

You can now install the kitchen kit backing plate into the window box as seen below.



Should you experience any problems, please contact us so that we can assist you.

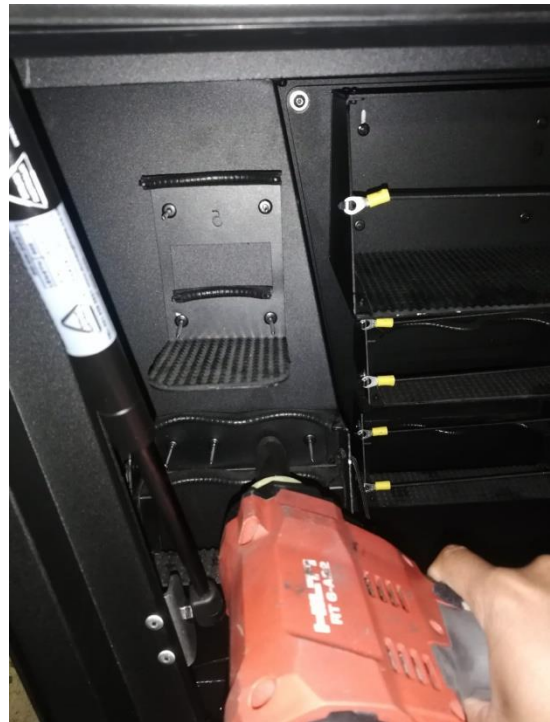
Enquiries: [queries@alu-cab.co.za](mailto:queries@alu-cab.co.za)  
Tel: +27 21 703 3028



#### **STEP 4:**

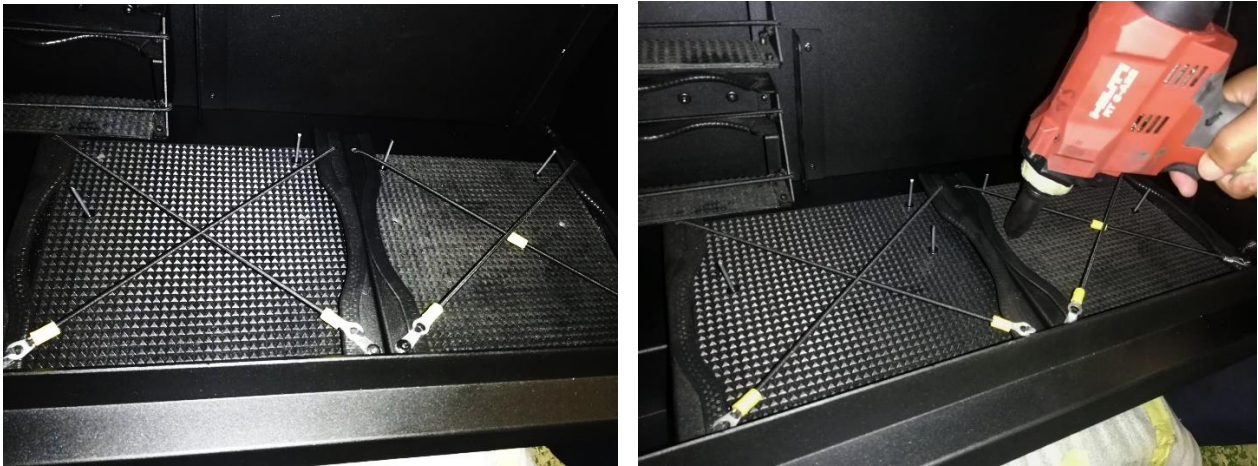
Once the backing plate is securely bolted in place, you can proceed to install the glass/tumbler and salt/pepper shaker holders.

The glass/tumbler holder is installed on the LHS of the box at the top on the LHS kitchen kit and similarly on the RHS of the box at the top on the RHS kitchen kit as seen below.



### **STEP 5:**

You can now proceed to fit the pot and kettle holders as seen below.



### **STEP 6:**

Finally you can fit the knife holder, the 2 holes are located on the inside of the box on the RHS against the edge of the box with the LHS kitchen kit and on the LHS with the RHS kitchen kit.



**Once step 6 has been completed, you will have successfully installed the kitchen kit to your 76 series landcruiser side boxes.**

Should you experience any problems, please contact us so that we can assist you.

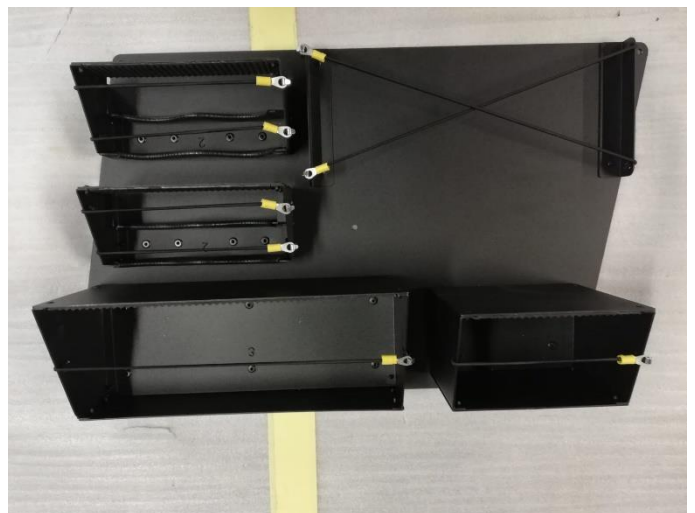
Enquiries: [queries@alu-cab.co.za](mailto:queries@alu-cab.co.za)  
Tel: +27 21 703 3028

## RHS KITCHEN KIT:



### STEP 1:

Please confirm that all the required parts and fasteners are accounted for and lay them out on a table or flat surface.

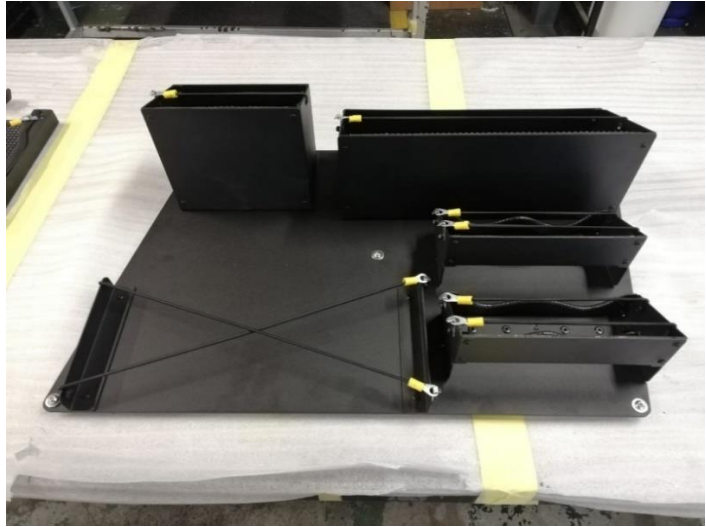


Should you experience any problems, please contact us so that we can assist you.

Enquiries: [queries@alu-cab.co.za](mailto:queries@alu-cab.co.za)  
Tel: +27 21 703 3028

## **STEP 2:**

Fasten a M5x25mm bolt with flat washer and nut to each of the holes of the backing plate as seen below.



Ensure to leave +/- 1mm of play on each of the bolts as this will allow the backing plate to be fitted more easily.

## **STEP 3:**

You can now install the kitchen kit backing plate into the window box as seen below.



Should you experience any problems, please contact us so that we can assist you.

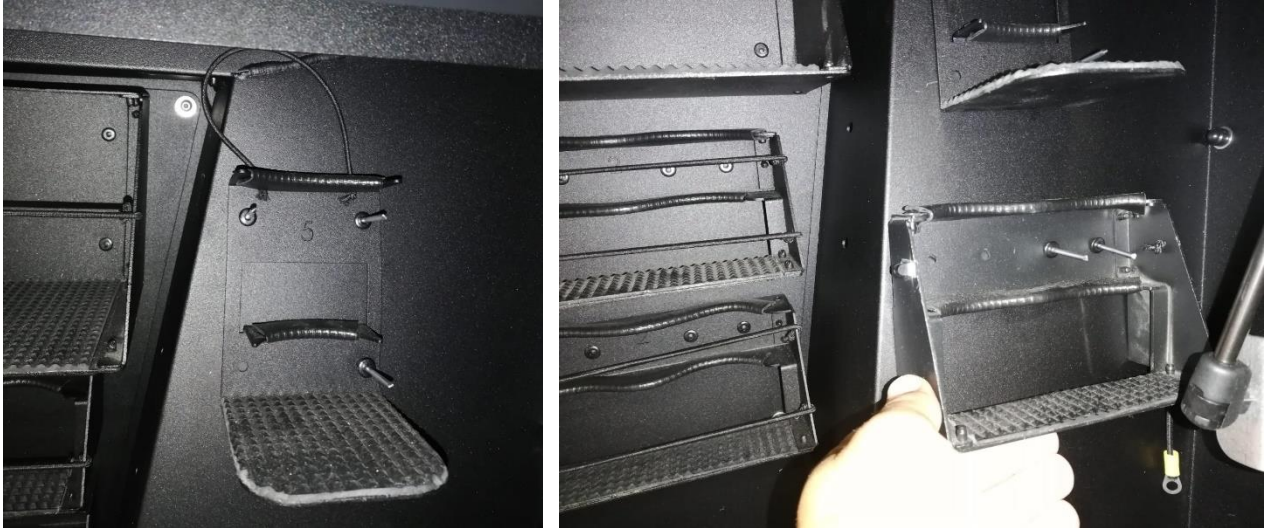
Enquiries: [queries@alu-cab.co.za](mailto:queries@alu-cab.co.za)  
Tel: +27 21 703 3028



#### **STEP 4:**

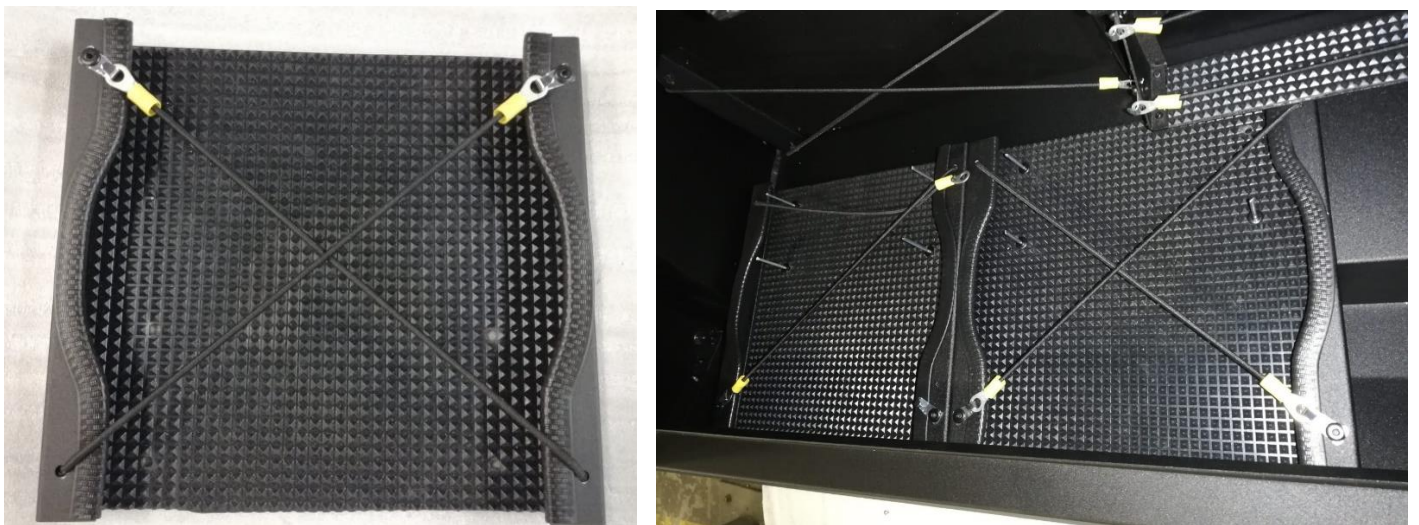
Once the backing plate is securely bolted in place, you can proceed to install the glass/tumbler and salt/pepper shaker holders.

The glass/tumbler holder is installed on the LHS of the box at the top on the LHS kitchen kit and similarly on the RHS of the box at the top on the RHS kitchen kit as seen below.



#### **STEP 5:**

You can now proceed to fit the pot and kettle holders as seen below.



Should you experience any problems, please contact us so that we can assist you.

Enquiries: [queries@alu-cab.co.za](mailto:queries@alu-cab.co.za)  
Tel: +27 21 703 3028

## **STEP 6:**

Finally you can fit the knife holder, the 2 holes are located on the inside of the box on the RHS against the edge of the box with the LHS kitchen kit and on the LHS with the RHS kitchen kit.



**Once step 6 has been completed, you will have successfully installed the kitchen kit to your 76 series landcruiser side boxes.**