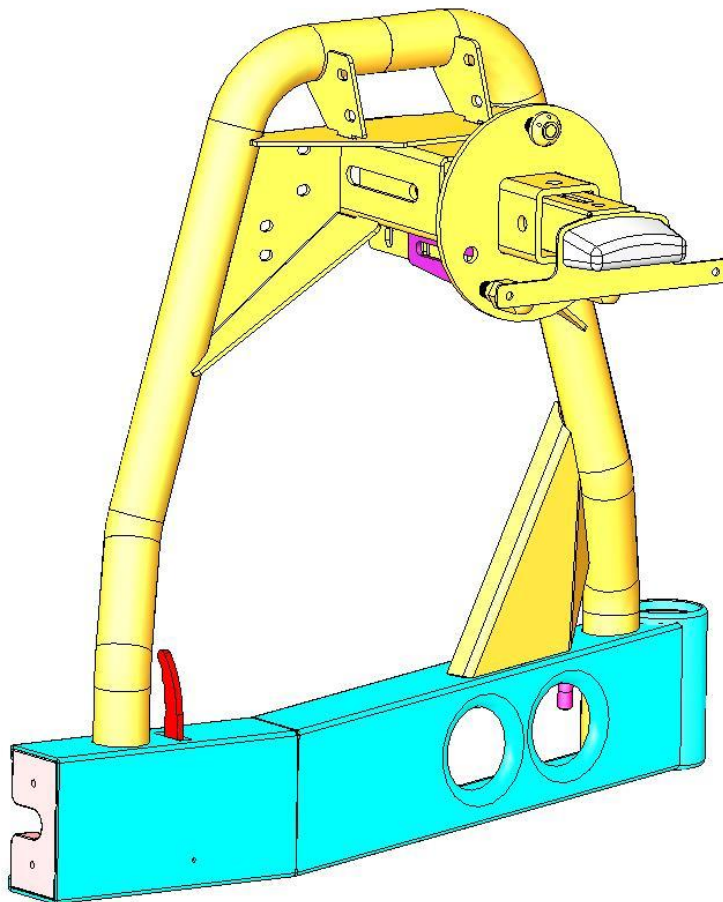


SPARE WHEEL CARRIER TO SUIT ARB REAR STEP TOW BAR

Product number: 5700011, 5700012, 5711011, 5711012,
5711211, 5711212, 5700211 and 5700212



**READ FITTING INSTRUCTIONS
CAREFULLY BEFORE PROCEEDING**

USE	PART No	QTY	DESCRIPTION
FIT BEARINGS, SEALS AND SPACERS TO WHEEL CARRIER ARM	5700011/12	1	Wheel carrier arm
	7320002	2	Bearing
	7320003	2	Seal
	6250001	1	Spacer thick (top)
	6250002	1	Spacer thin (bottom)
FIT BUMP STOP TO ARM	6260002	1	Bump stop
	6151028	1	Nut M8
	4581044	1	Washer 8mm flat
	4581046	1	Washer 8mm spring
FIT URETHANE C TO ARM	6260001	1	Urethane C
	6151331	2	Countersunk cap screw M6 x 30 stainless steel
	6151162	2	M6 nyloc nut
FIT LOCKING PIN ASSEMBLY TO ARM	4590008	1	Locking pin
	4590009	1	Locking pin spring
	4590010	1	Roll pin
FIT CATCH HOOK TO REAR BAR	4590007	1	Catch hook
	6151022	2	Bolt M8 x 25
	4581044	2	Washer 8mm flat
	4581046	2	Washer 8mm spring
	6151303	2	Nut M8 caged
	3756746	2	Packer catch hook
FIT HEIGHT WEDGE TO REAR BAR	5665677	1	Height wedge
	6821116	2	Grommet nylon snap in type
	6151283	2	Screw 6-18 x 25mm
FIT ARM TO REAR BAR	6250002	1	Spacer thin (bottom)
	6151329	1	Bolt M20 x 190
	6151330	1	Nut M20 nyloc
	4581294	1	Washer 20mm flat
	6151184	1	Socket head cap screw M8 x 30 stainless steel
FIT CATCH TO ARM	4590011	1	Catch Assembly
	6151263	4	Socket head cap screw M8 x 20 stainless steel
	4581046	4	Washer 8mm spring
FIT STRUT	4590001	1	Strut
	6151032	2	Nut M8 nyloc

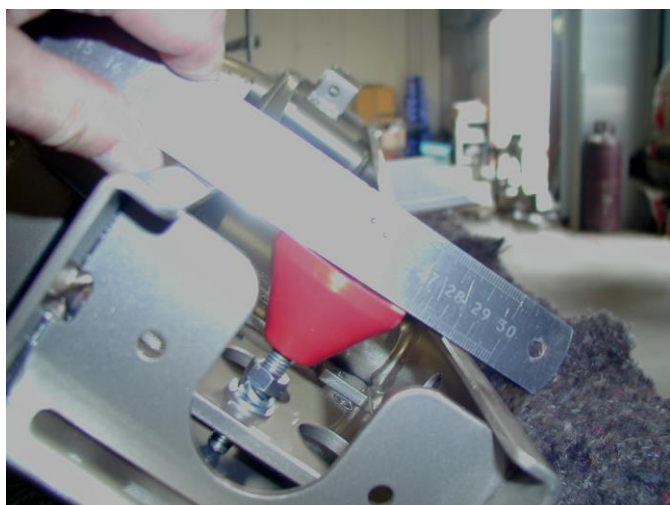
FIT WHEEL MOUNT BRACKET TO WHEEL CARRIER	3756694	1	Wheel mount bracket
	6151332	3	Stud
	6151357	1	Bolt M10 x 30mm SEMS (PINNING BOLT)
	6151321	1	Nut M10 Flange (“ “)
	6151333	2	Nut mag wheel
	6151334	1	Lock nut with socket
	4581295	3	Washer wheel nut tapered
	4581296	3	Washer wheel nut flat
	4601064	1	Nut channel wheel mount
	6151306	2	Nut M12 caged
	6151335	2	Bolt M12 x 35 x 1.75
	4581007	2	Washer ½” flat heavy duty gold zinc
	4581050	2	Washer 12mm spring
	FIT LIGHT TO NUMBER PLATE BRACKET	3756687	1
86060		1	Number plate light (<i>supplied in rear bar fitting kit</i>)
6151281		2	Screw M5 x 12 (<i>supplied in rear bar fitting kit</i>)
6151282		2	Nut M5 flange (<i>supplied in rear bar fitting kit</i>)
FIT NUMBER PLATE	6151017	2	Bolt M6 x 16
	6151128	2	Nut M6 flange
	6151046	2	Washer 6mm flat
FIT NUMBER PLATE BRACKET TO WHEEL CARRIER	4601062	1	Nut channel number plate mount
	6151306	1	Nut M12 caged
	6151355	1	Bolt M12 x 30 x 1.75
	4581049	1	Washer 12mm flat
	4581050	1	Washer 12mm spring

TOOLS REQUIRED: Basic tool kit, Torque wrench 6-80Nm capacity, 30mm socket, ¼” drive socket set, silicon.

TORQUE SETTINGS: 6mm – 9Nm, 8mm – 22Nm, 10mm – 44Nm, 12mm – 77Nm

IT IS RECOMMENDED THAT SPARE WHEEL CARRIERS ARE FITTED TO REAR BAR AFTER REAR BAR HAS BEEN FITTED TO VEHICLE.

SEE FITTING INSTRUCTIONS FOR FITTING REAR BAR SUPPLIED IN REAR BAR FITTING KIT.

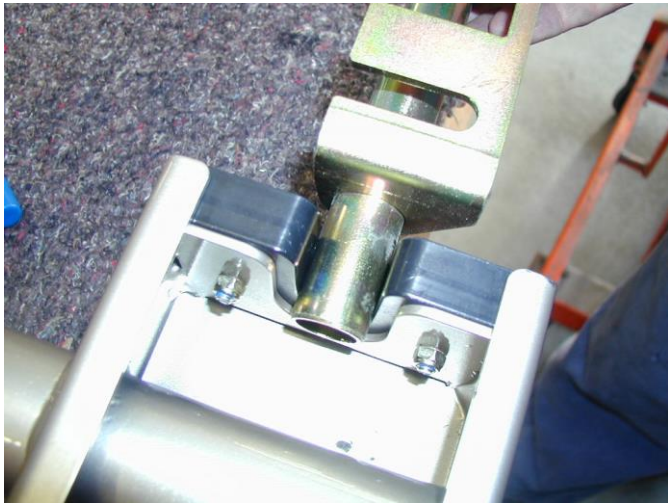


1. Fit red bump stop in mount plate using M8 nut, spring washer and flat washer as shown.
2. After fitting adjust so bump stop protrudes 8mm rearward of arm channel.
Finger tighten only.



3. Fit black urethane C shaped part into end section of arm using M6 x 30 stainless steel counter sunk cap screws and nyloc nuts.
Tighten cap screws until heads sink flush to surface.





4. After tightening cap screws to secure black urethane to arm, check clearance using centre locator assembly as per photo.

If locator is too tight, open urethane, as shown below, then tighten cap screws until heads sink flush to surface.



The photo shows the locking pin assembly viewed from underneath.

5. Fit spring to inside of bracket, then fit locking pin through bracket and spring as shown left.
Step 6 explains how to fit roll pin to secure spring and locking pin in bracket.



6. With the help of a friend, place a flat blade screw driver into slot on top of bracket. Force spring rearward, then holding roll pin with pointed nose pliers, fit roll pin into hole in locking pin and tap into place with a hammer until roll pin protrudes approximately 3mm through slot in top of bracket.

Bent end of locking pin must hang downwards.



M8 caged nuts should be already fitted to rear bar.
Caged nuts must be fitted to rear bar before rear bar is fitted to vehicle.

7. Using two **M8 x 25 bolts**, spring washers and flat washers, fit catch hook to rear bar.
8. Adjust so that bolts are located in the centre of the vertical slots.
9. Finger tighten only.



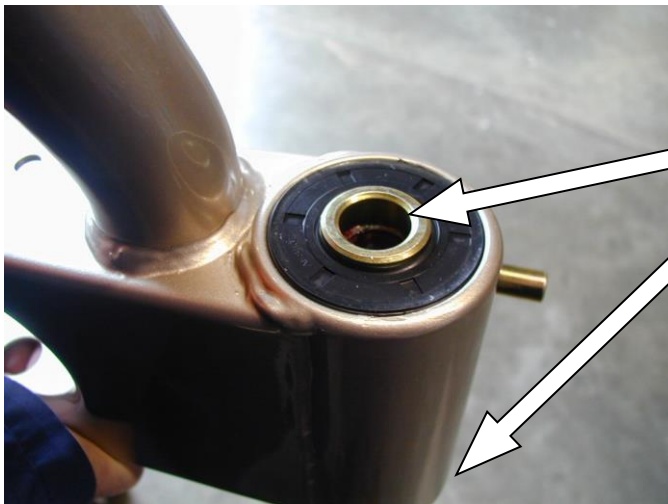
10. Fit plastic plugs into square holes in rear bar.
11. Position black plastic wedges over plugs and secure using black screws.



12. Tighten until head of screw is just below surface of black plastic wedge.



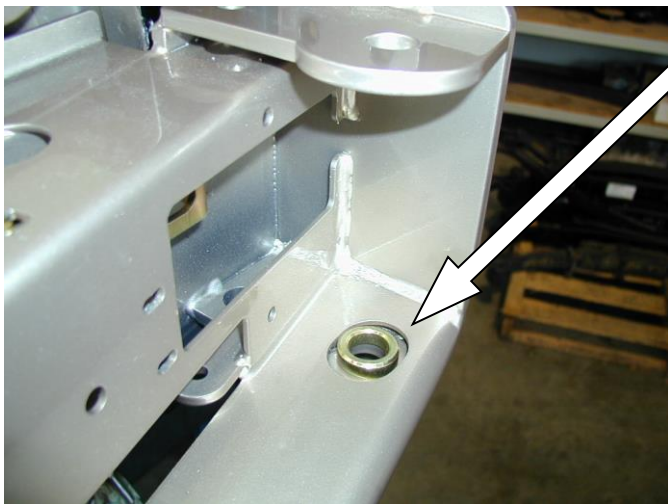
13. Loosen previously fitted M12 bolts in centre of rear bar, if fitting a wheel carrier.
14. Slide locator bracket (supplied in Rear bar fitting kit) under washers and tighten just enough to allow for vertical adjustment at a later stage.



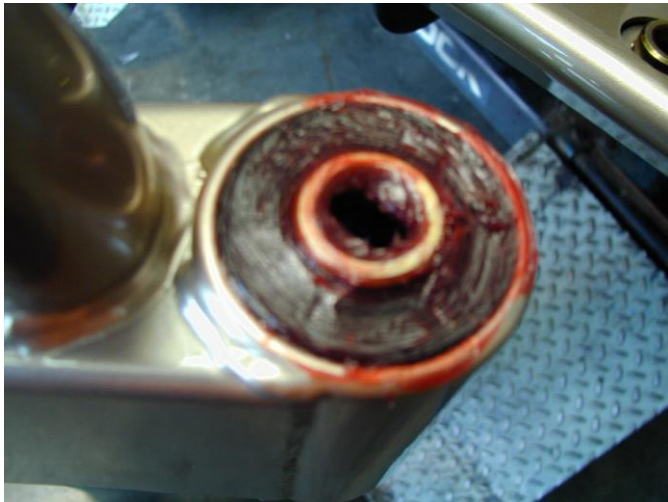
15. There are three spacer rings supplied – one thick and two thin. Fit spacer rings in seals as shown.

Fit one thick spacer ring in upper seal.

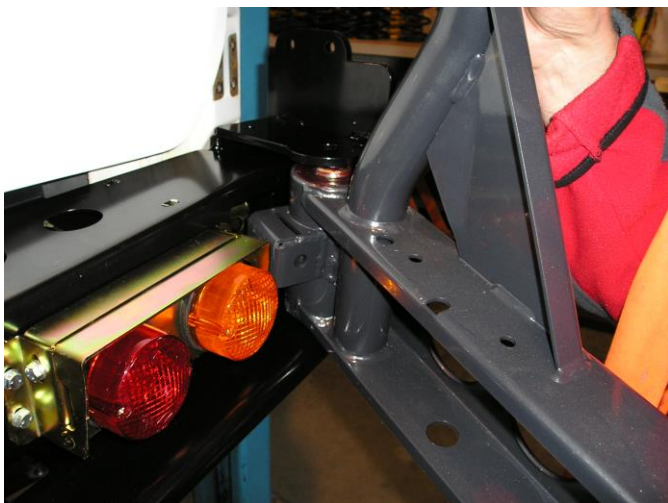
Fit one thin spacer ring in lower seal.



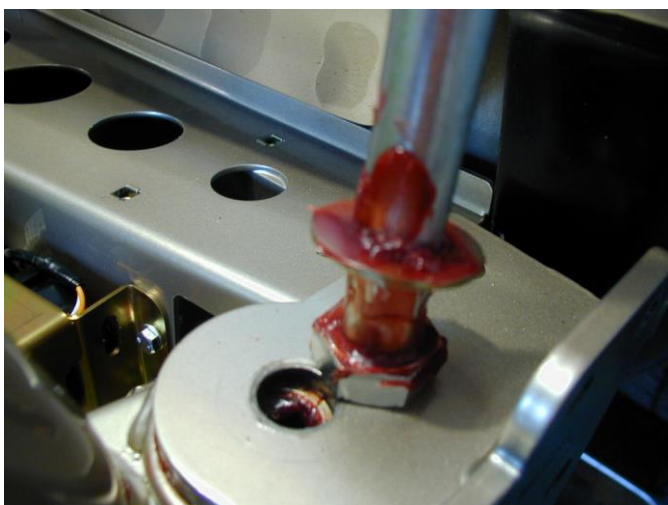
16. Fit thin spacer into lower section of outer side of rear bar over top of slot.



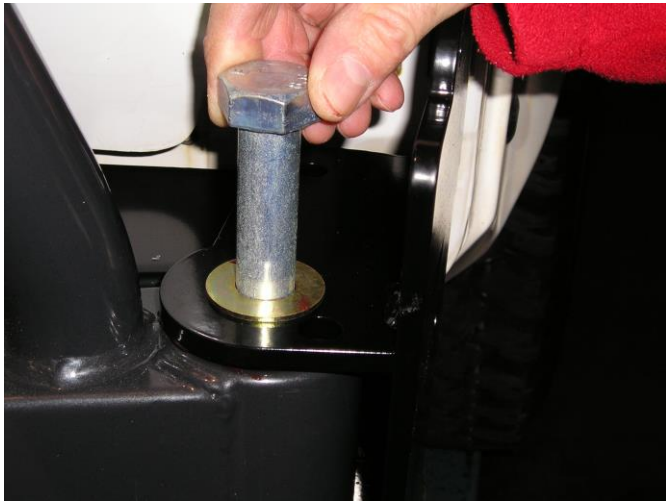
17. Cover top and bottom of bearing hub with grease to waterproof product.



18. Slide wheel carrier arm between outer mount plates of rear bar and align holes.



19. Fit large flat washer to M20 x 190 bolt and cover with grease as shown.



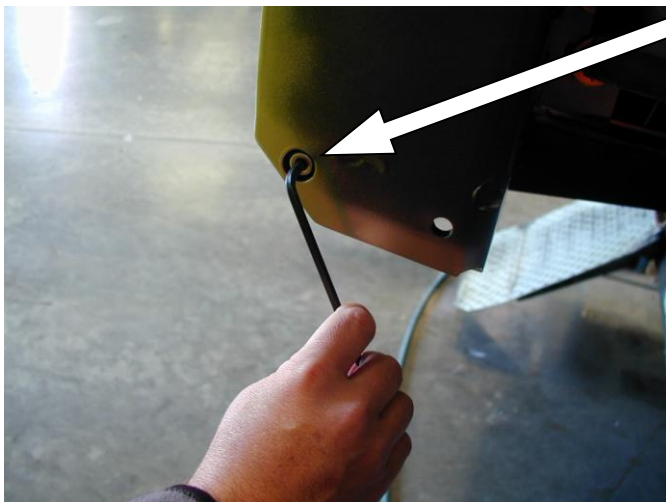
20. Fit bolt assembly from top through aligned fixtures. This is a neat fit. The bolt may need a gentle tap with a hammer.

21. Pass down so that the end of the bolt protrudes just enough to get a start on the M20 nyloc nut.



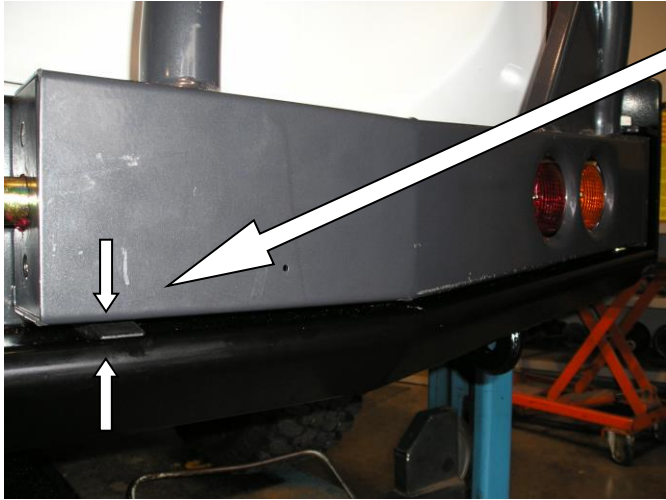
22. The nut is held captive, so all tightening is from the top using a 30mm socket.

23. Nip up, rotate arm checking that there is no slack then using torque wrench tighten to 70-80Nm.

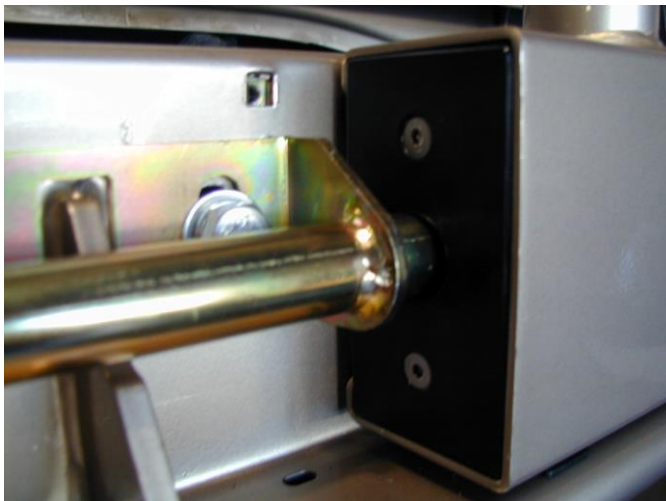


24. Fit M8 x 30 stainless steel socket head cap screw into outer end of rear bar.

This screw pushes on the nut to adjust the height of the wheel carrier arm.



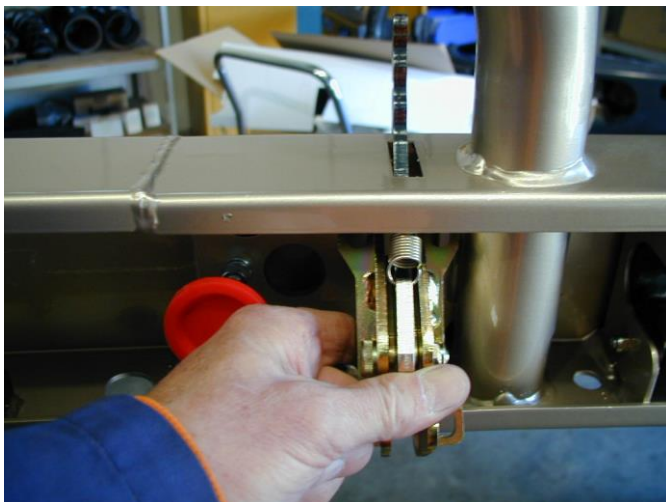
25. Tighten adjuster screw until the lower section just clears the black plastic height wedge.
26. Tighten M20 bolt using 30mm socket to the point where arm swings freely without slack.
Do not over tighten to the point where bearings are crushed.



27. To adjust the position of the centre locator bracket, close wheel carrier arm so that tube sections of the locator bracket are centralised by the urethane C section.

If fitting arms to both LHS and RHS, both arms should be adjusted as described above, and then closed to position the locator bracket.

28. Tighten M12 bolts.



29. To fit catch assembly to arm mounting plate, pass handle through slot in top of arm and secure using four **M8 x 20 stainless steel cap screws** and spring washers.

It is recommended that Loctite is used to secure cap screws.



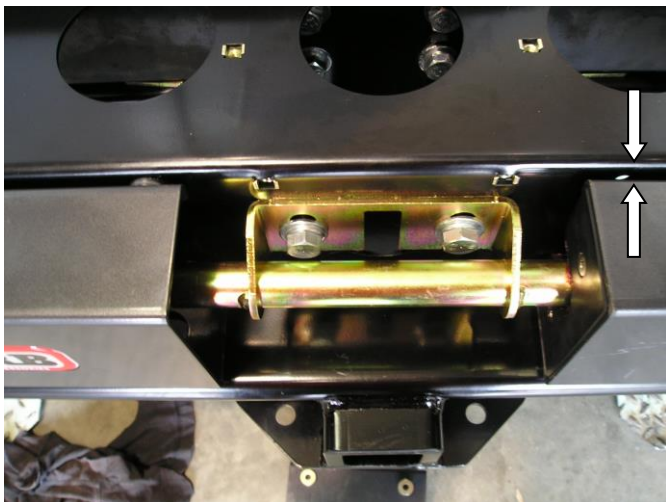
30. Carefully close wheel carrier arm so the catch can position the catch hook.
31. Release the catch and open arm.
32. Check catch hook is horizontal and tighten firmly.
33. Close arm to check catch hook position.

The above process may need to be repeated until the catch action works freely.

If catch does not work correctly red bump stop may be too far out.



34. To put tension on slam catch, unscrew red bump stop and repeat closing action until there is no movement in arm when it has been closed.
- When correctly adjusted the slam catch should have a crisp sounding click as it locks up.



When closed and under tension the rear of the arm should be 5mm from the front face of the rear bar.

35. If the end of the arm is closer to the rear bar than 5mm, packers can be placed behind the catch hook.
- After fitting packers steps 32 to 36 will need to be repeated to readjust the arm.





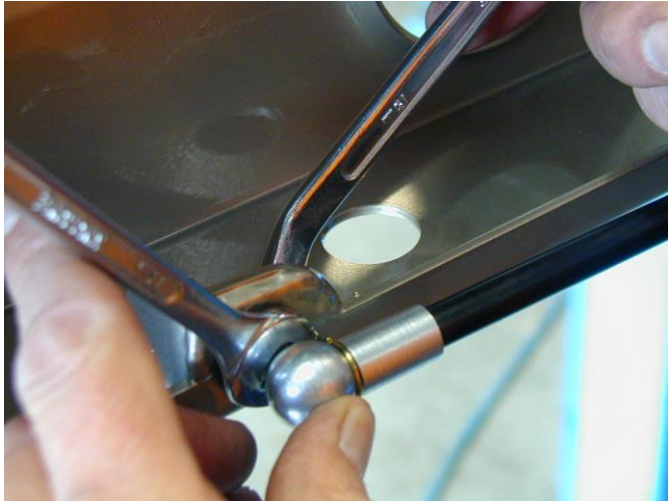
36. Centralise light assembly over apertures in arm and tighten all 6mm hardware.



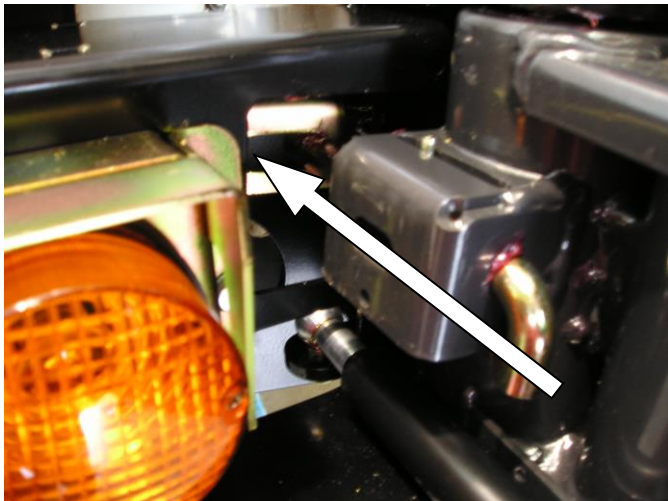
37. Fit ball mounts to both ends of strut and lock using wire retainer clips.



38. Using **M8 nyloc nut**, fit covered end of strut to rear bar mount and tighten securely.



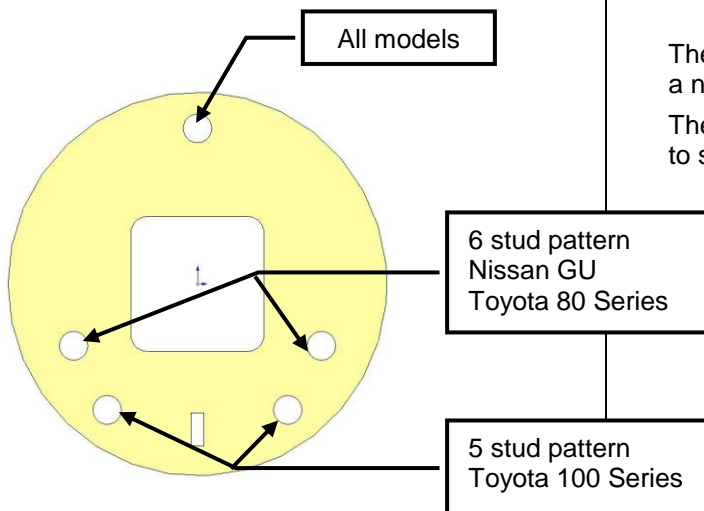
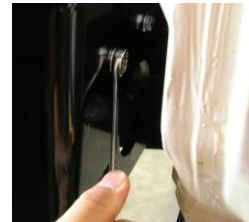
39. Fit other end of strut to swing arm with **M8 nyloc nut** and tighten securely.



40. With arm fully opened, slide locking pin into locking pin bracket.

41. Adjust locking pin bracket so that pin is up against end of slotted hole.

42. Tighten M8 bolts securely from rear of rear bar.



The wheel mount bracket has been designed to suit a number of stud patterns.

The studs must be fitted to the wheel mount bracket to suit your vehicle.



43. From rear of wheel mount bracket fit studs into rear of mount plate as shown.

44. Hammer stud head until stud is firmly up against plate.



Two nut channels are supplied.

One with a large round hole and one without.

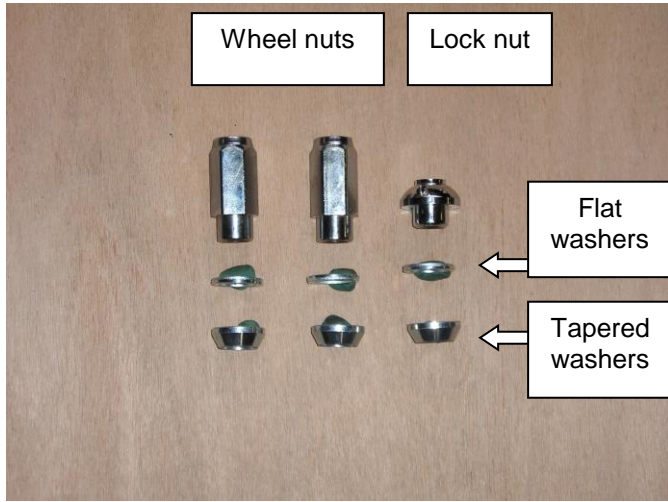
45. Fit M12 caged nuts to nut channel with the large round hole.

46. Fit caged nut channel into rear of wheel mount bracket and align with holes in sides of tube.



47. Fit wheel mount bracket to wheel carrier arm.

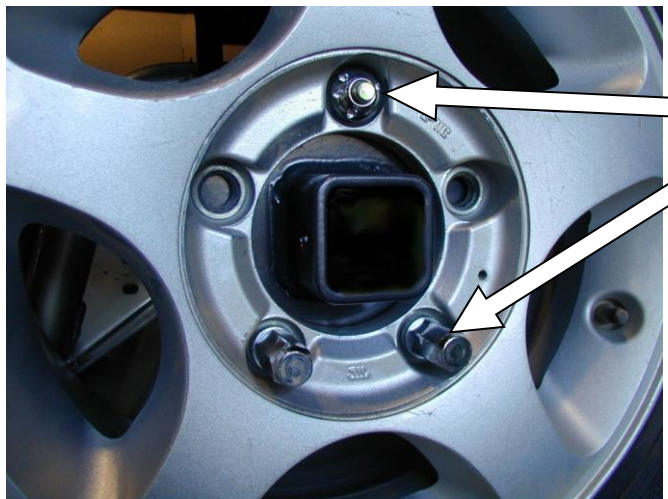
48. Secure finger tight with two M12 x 35 bolts, spring washers and large gold colored flat washers.



A combination of nuts and washers are supplied to suit aluminium mag wheels and steel wheels.

If fitting steel wheels or aluminium wheels with tapered holes, use the flat washer and **tapered locating washer** with the wheel nuts and lock nut.

If fitting aluminium mag wheels with counter bored holes use the **flat locating washer only** with the nuts.



49. Fit spare wheel to spare wheel mount.

50. Fit lock nut with corresponding washers to top stud.

51. Fit two domed nuts with corresponding washers to lower studs.



52. Push tyre so that tyre touches frame. Note the position of the wheel mount bracket in the wheel carrier.



53. Remove the tyre. Push the wheel mount bracket back approximately 10mm into the wheel carrier and fasten two M12 bolts securely. (Refer to step 48.)
54. Using a 10mm drill bit, drill through rear hole.

NB. If no hole is already in this position to use as a drilling template, drill a 10mm hole 20mm behind front hole.



55. Once the 10mm hole has been drilled, fit a 10m x 30 mm bolt assembly (SEMS) into drilled hole. Fit a 10mm flange nut into a 15mm ring spanner, slide inside tube section to rear hole and tighten bolt securely.



56. Refit tyre to wheel mount bracket and fasten securely.

After fitting tyre, repeat step 27. Adjust clearance to suit and fit stainless steel adjusting screw with Loctite.



57. If fitting a jerry can carrier and a wheel carrier, the number plate and light should be fitted to the jerry can carrier. If not fitting a jerry can carrier the number plate and light should be fitted to the bracket as described below.

Compile parts the following parts as shown:

- Number plate bracket

Number plate light (supplied in rear bar fitting kit)

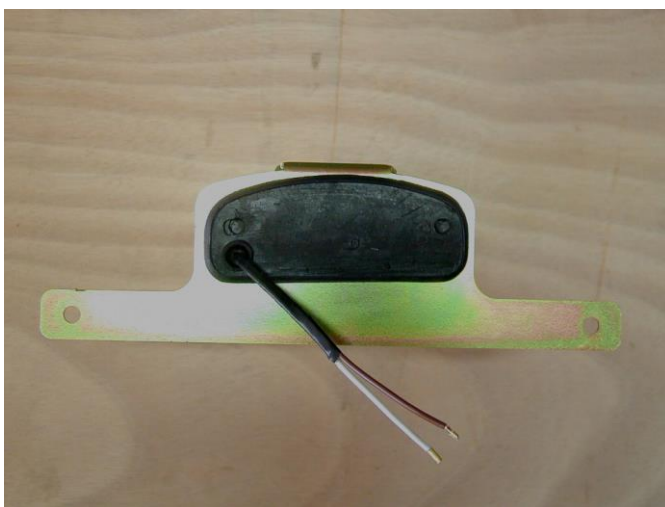
- Number plate loom (supplied in rear bar fitting kit)

- 2 x M5 x 12 pan head screws

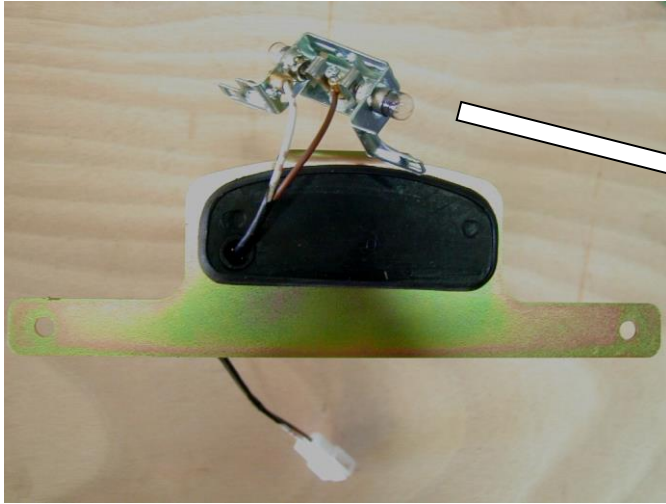
- 2 x M5 flange nuts



58. Remove screw from front of light and disassemble as shown.



59. Feed loom through bracket and seal as shown.



60. Fit loom to light as shown. Note position of white and brown wires.



White wire
(Earth)

Brown wire
(Tail light)

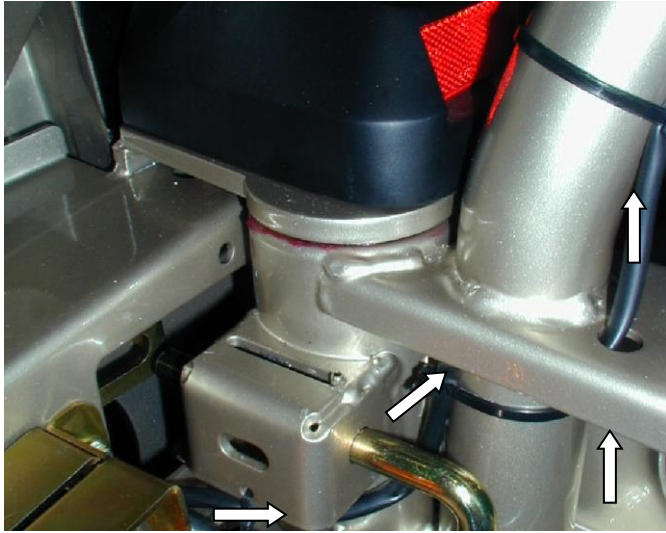


61. Secure light to bracket using M5 pan head screws and flange nuts.



62. Refit light cover using screw supplied.

63. Fit number plate using **M6 x 16 bolts**, flat washers and flange nuts.



- 64. Fit number plate loom to wheel carrier.
- 65. Cable tie to locking pin bracket so that wire is free to move through opening and closing action.
- 66. Feed loom between hub and wheel carrier frame, up through hole and along frame. Cable tie to frame where required.



- 67. Feed loom through rear of wheel mount as shown.

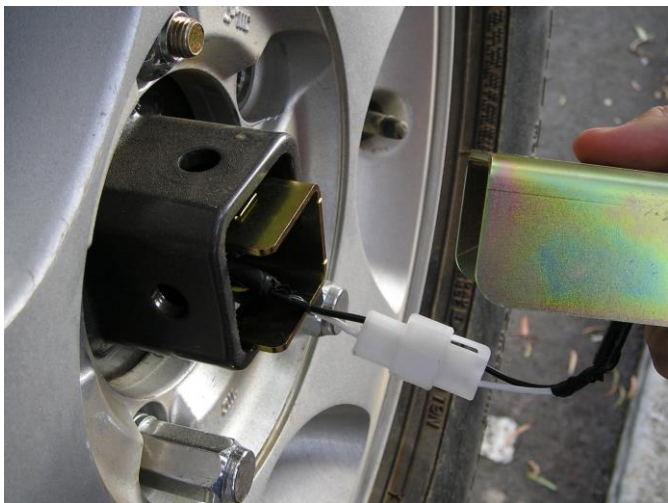


Fit M12 x 1.75 caged nut to channel then sit inside wheel mount as shown.



68. Cable tie loom to wheel carrier frame leaving enough excess, as shown above, for fitting to number plate bracket.

(Wheel carrier frame shown here with optional HF aerial mount fitted.)



69. Connect loom and insert number plate bracket into wheel mount.



70. Secure finger tight with **M12 x 30 bolt**, spring washer and flat washer.



71. Slide bracket in and secure tightly.

(Number plate bracket shown here with optional reversing light fitted.)



72. To secure wheel mount bracket to wheel carrier a padlock can be fitted as shown.

TO FIT REMAINDER OF REAR BAR REFER TO FITTING INSTRUCTIONS SUPPLIED IN REAR BAR FITTING KIT.