

48002310

AFN
acessórios 4x4



Checklist / Manual de Montagem -



Checklist / Fitting Instructions -



Despiezas / Instrucciones de montaje -



2h



1 x1 48001522		2 x1 48001309		3 x1 47001757		4 x1 47001756	
5 x1 47001755		6 x1 47001754		7 x1 47001753		8 x1 47001752	
9 x1 47001751		10 x2 47001451		11 x2 47001450		12 x2 47001111	
13 x2 46005516		14 x2 46005515		15 x2 46005514		16 x1 46005369	
17 x2 46005253		18 x6 46004358		19 x2 46004345		20 x2 46004340	
21 x4 46003952		22 x2 46003951		23 x1 46003674		24 x2 46003673	
25 x2 46003672		26 x4 46003671		27 x1 46003043		28 x1 46003042	
29 x2 46002997		30 x2 46002340		31 x2 45001052		32 x1 45001049	
33 x1 45000921		34 x2 45000874		35 x2 45000872		36 x2 45000871	

Nissan Navara NP300
(2015-)



37 x2 45000641 Mola Ø9x1x14,5	38 x2 45000626 Prf.Sx.Rsc.P M8x60x	39 x2 45000719 Prf.cb.con - M6x20	40 x10 45000315 Prf. Sx. M12x35x1,25
41 x1 45000276 Anilha M4	42 x1 45000267 Prf. Cb. Sx. M12x40	43 x2 45000216 Prf. Cb. Sx. M14x30	44 x2 45000079 Batente de amort.
45 x8 45000077 Prf. Cb. Sx. M6x25	46 x8 45000074 Fêmea Freiada M6	47 x9 45000067 Prf. Cb. Sx. M12x35	48 x8 45000066 Fêmea Freiada M12
49 x8 45000058 Prf. Cb. Sx. M8x20	50 x12 45000048 Anilha M8x16x1,6	51 x2 45000037 Prf. Cb. Sx. M12x30	52 x28 45000036 Anilha Aba Larga M12
53 x2 45000034 Fêmea Sext. M12	54 x6 45000018 Fêmea Freiada M8	55 x8 45000017 Fêmea Freiada M10	56 x2 45000015 Prf. Cb. Sx. M10x25
57 x2 45000013 Fêmea Sext. M8	58 x12 45000010 Anilha Aba Larga M10	59 x8 45000007 Prf.Cb.Sx.M10x30x1,5	60 x2 45000889 Grasser M10

Acessórios: ___ / ___ / ___ | Peças/Compostos: ___ / ___ / ___ | Artigo: ___ / ___ / ___ | Embalagem: ___ / ___ / ___

Thank you for choosing AFN products, a lot of time in R&D has gone into perfecting our products. However, if you find problems with any AFN products you have purchased, or if you have any information which would help us to improve our products, please let us know.

If you think there may be a problem either before or after fitting the AFN product, it is best to contact your nearest AFN distributor.

WARNING

- This product should be installed as demonstrated in the product fitting instructions.
- If verified that any component is damaged, please contact your nearest AFN distributor.
- The specified parts, will only fit the models specified by AFN.
- Do not modify any component of the product.
- It is recommended that this product is installed by specialised and trained personnel.
- AFN cannot be responsible for any changes made by the vehicle manufacturer.
- Work safely and use specialised tools at all times.
- Always use protective gear.



size	Torque Nm	Torque lbft
M6	9Nm	4 lbft
M8	22Nm	16 lbft
M10	44Nm	32 lbft
M12	77Nm	57 lbft

- Tools set required:



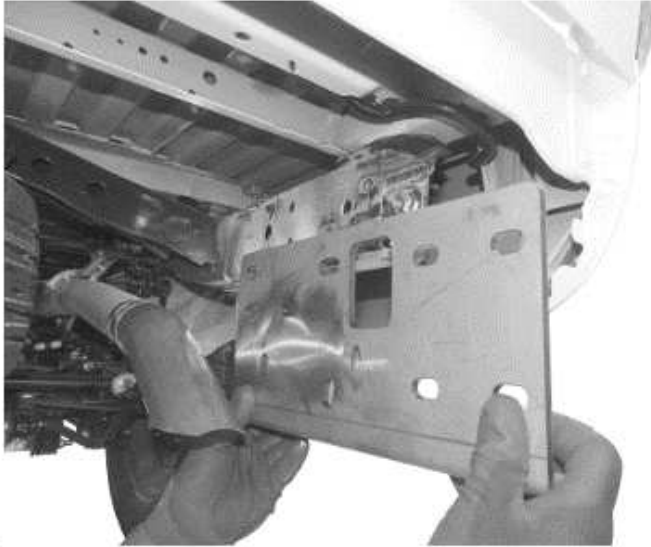
CONTACTS

R. da Madeira, nº 113
Z. Industrial das Travessas
3700-176 S. João da Madeira
Portugal

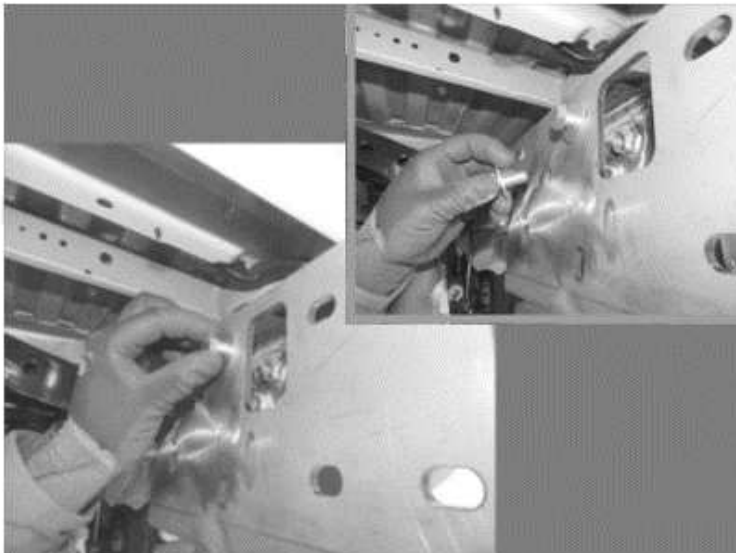
Tel.: (+351) 256 838 300
Fax: (+351) 256 838 305
www.afn.pt
geral@afn.pt

COORDINATES

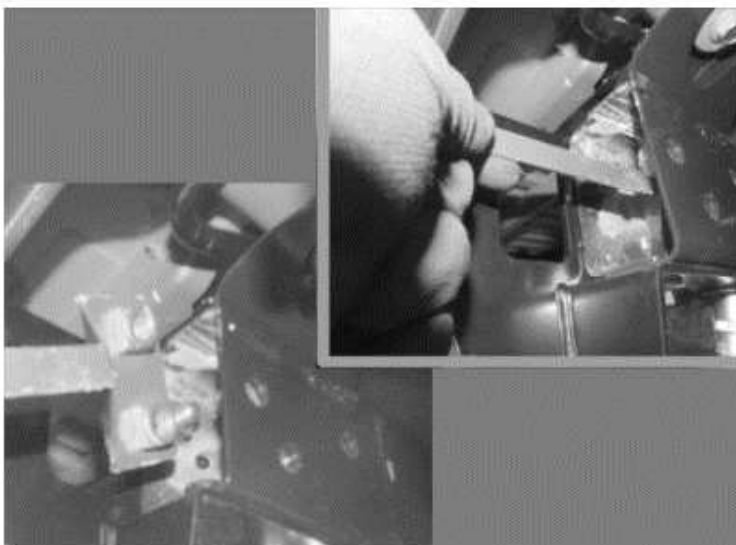
DATUM: European 79
UTM 05.44.100
29T 45.28.300
N 40°54' 14.0"
W 08°28' 35.0"

01

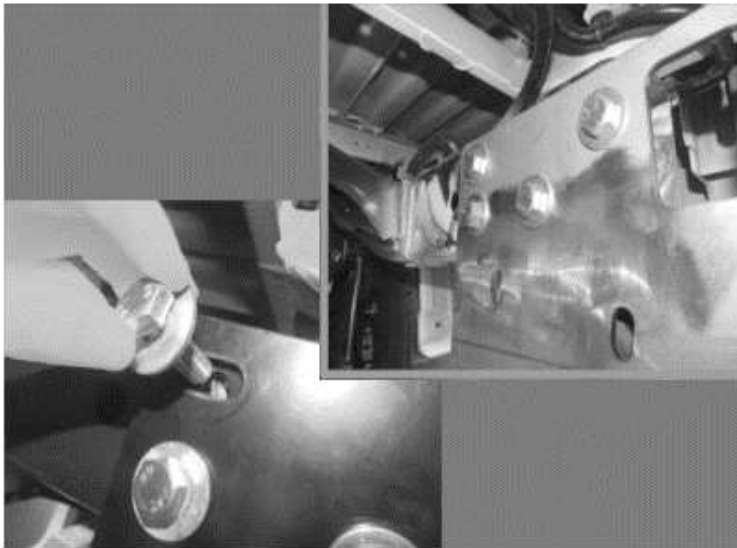
- After removing the OEM parts, please insert part number 47001754.

02

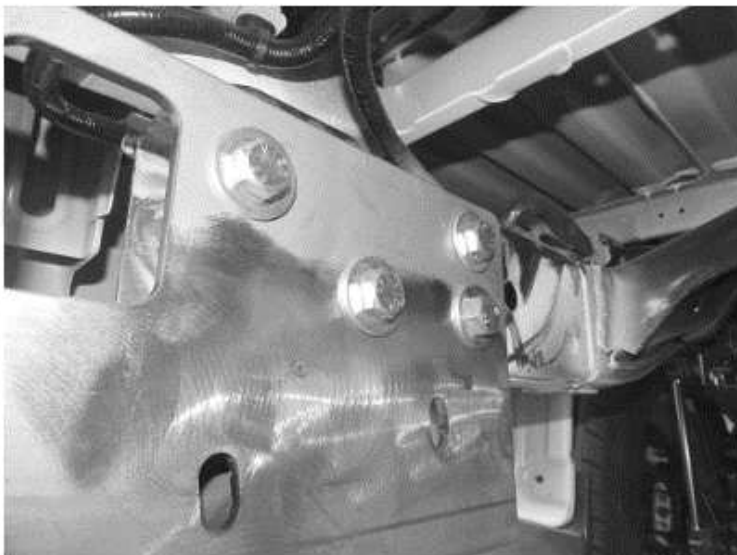
- Please finger tight bolts 45000315 / 45000036.

03

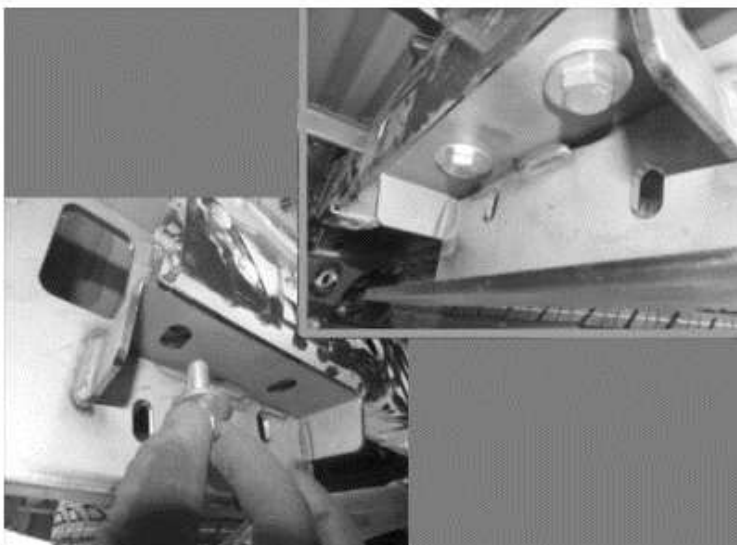
- Please insert part number 47001757 inside chassis, only on the right side.

04

- Please finger tight bolts
4500037 / 45000036.

05

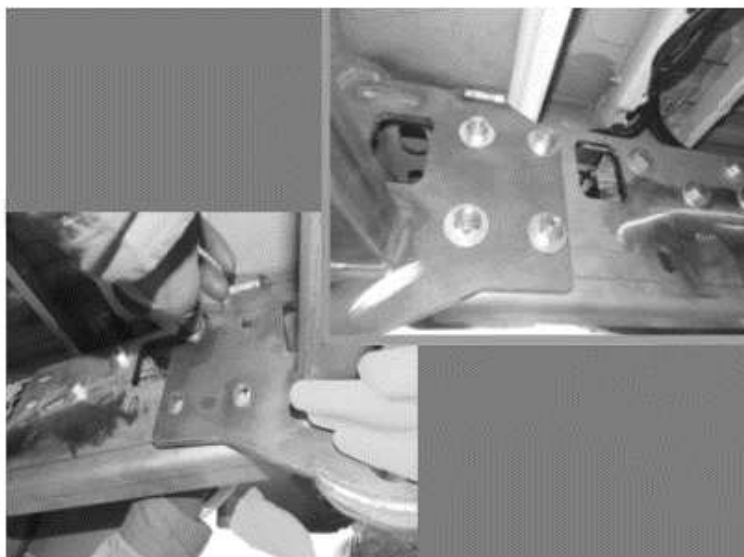
- Please do the same operation on
the opposite side.

06

- Please finger tight the bolts
45000315 / 45000036.

07

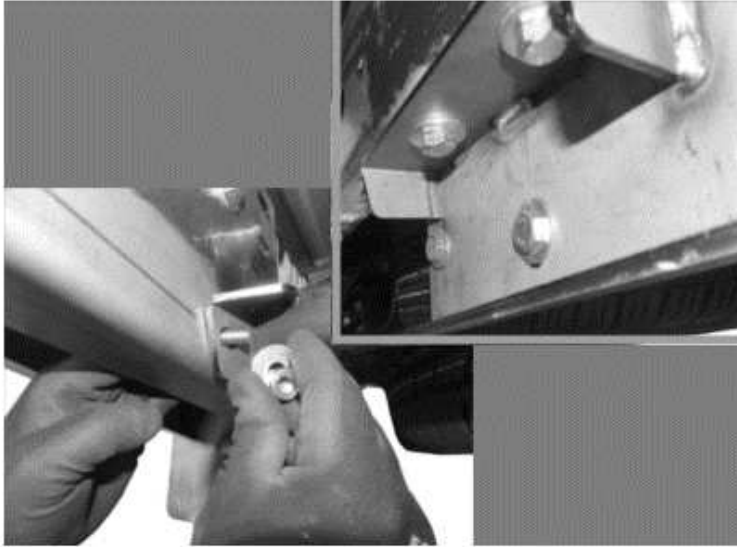
- Fit part number 47001751

08

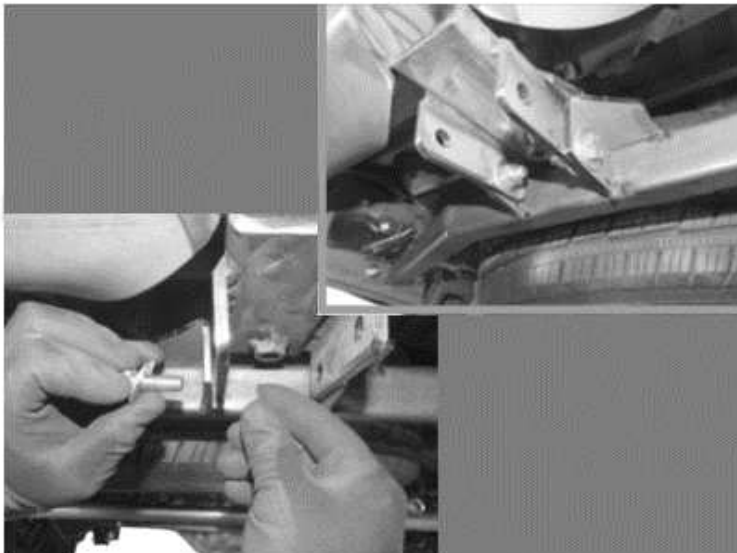
- Please finger tight bolts
45000067 / 45000036 / 45000066.

09

- Fit part number 47001756.

10

- Please finger tight bolts
45000007 / 45000010 / 45000017.

11

- Please finger tight bolts
45000007 / 45000010 / 45000017.

12

- Make sure you leave enough
gap between the body and the
rear bumper.

- Once all bolts are in place
please give the final tight (use the
table shown in the first page).