

# 48002279



**Checklist / Manual de Montagem - P.**  
**Choques traseiro c/ engate reboque - L200**  
**2015**



**Checklist / Fitting Instructions - Rear step**  
**bar with trailer hitch - L200 2015**



**Despiezas / Instrucciones de montaje -**



2h



<b>1</b> x1 47001716		<b>2</b> x1 47001715		<b>3</b> x1 47001714		<b>4</b> x1 47001713	
<b>5</b> x1 47001712		<b>6</b> x1 47001711		<b>7</b> x1 47001710		<b>8</b> x1 47001709	
<b>9</b> x2 45000267 Prf. Cb. Sx. M12x40		<b>10</b> x10 45000067 Prf. Cb. Sx. M12X35		<b>11</b> x6 45000066 Fêmea Freitada M12		<b>12</b> x26 45000042 Anilha M12	
<b>13</b> x12 45000039 Anilha M10		<b>14</b> x10 45000037 Prf. Cb. Sx. M12x30		<b>15</b> x2 45000034 Fêmea Sext. M12		<b>16</b> x6 45000017 Fêmea Freitada M10	
<b>17</b> x6 45000007 Prf.Cb.Sx.M10x30x1,5		<b>18</b> x2 47001233					

Mitsubishi L-200 Did  
Triton Cab. Dupla -  
Mod. 2015 (15- )



Acessórios: \_\_\_ / \_\_\_ / \_\_\_ | Peças/Compostos: \_\_\_ / \_\_\_ / \_\_\_ | Artigo: \_\_\_ / \_\_\_ / \_\_\_ | Embalagem: \_\_\_ / \_\_\_ / \_\_\_

Thank you for choosing AFN products, a lot of time in R&D has gone into perfecting our products. However, if you find problems with any AFN products you have purchased, or if you have any information which would help us to improve our products, please let us know.

If you think there may be a problem either before or after fitting the AFN product, it is best to contact your nearest AFN distributor.

## **WARNING**

- This product should be installed as demonstrated in the product fitting instructions.
- If verified that any component is damaged, please contact your nearest AFN distributor.
- The specified parts, will only fit the models specified by AFN.
- Do not modify any component of the product.
- It is recommended that this product is installed by specialised and trained personnel.
- AFN cannot be responsible for any changes made by the vehicle manufacturer.
- Work safely and use specialised tools at all times.
- Always use protective gear.



size	Torque Nm	Torque lbft
M6	9Nm	4 lbft
M8	22Nm	16 lbft
M10	44Nm	32 lbft
M12	77Nm	57 lbft

### - Tools set required:



#### CONTACTS

R. da Madeira, nº 113  
Z. Industrial das Travessas  
3700-176 S. João da Madeira  
Portugal

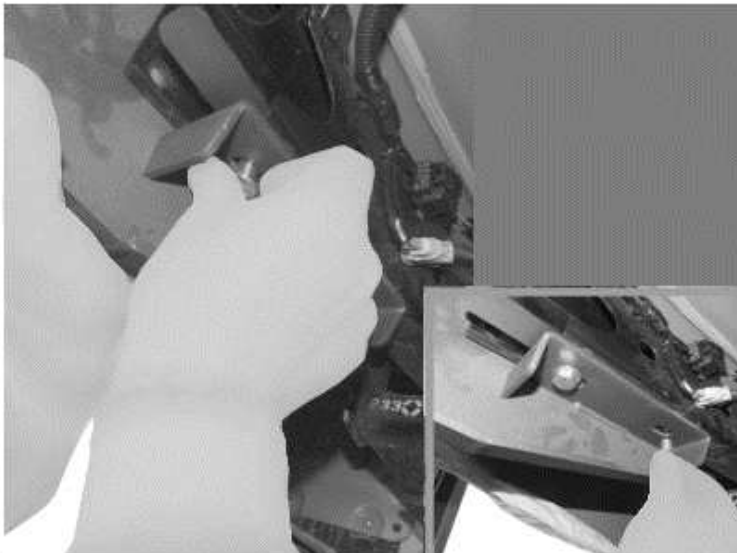
Tel.: (+351) 256 838 300  
Fax: (+351) 256 838 305  
www.afn.pt  
geral@afn.pt

#### COORDINATES

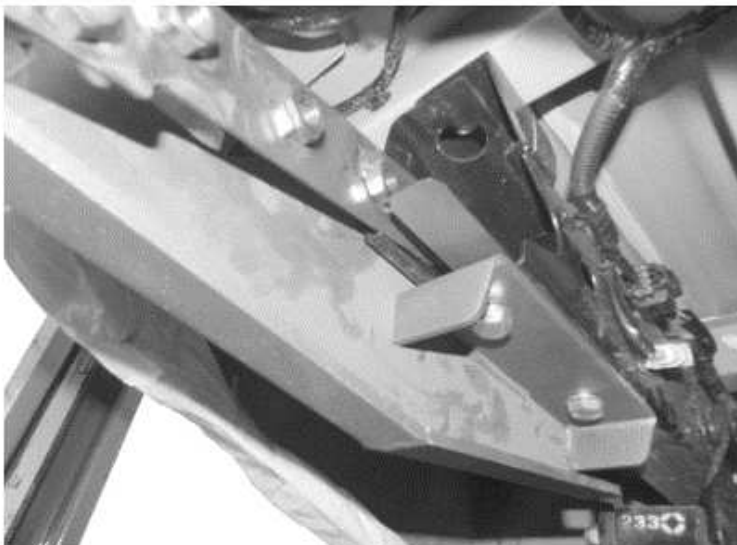
DATUM: European 79  
UTM 05.44.100  
29T 45.28.300  
N 40°54' 14.0"  
W 08°28' 35.0"

**01**

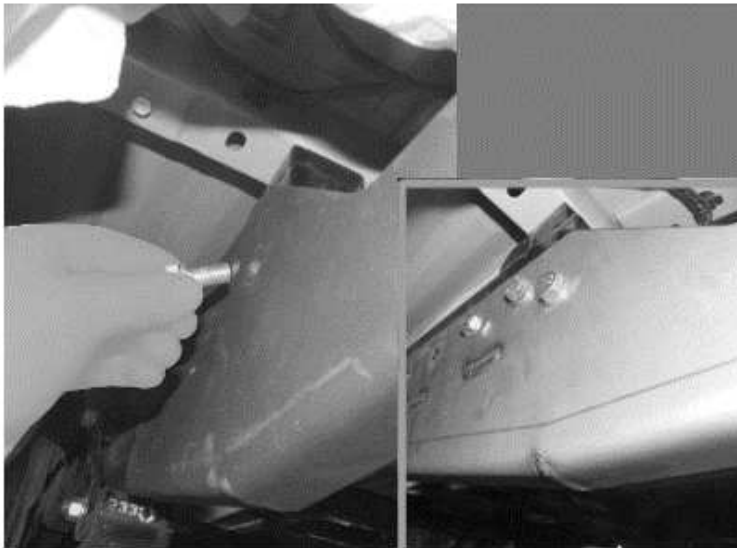
- After removing the OEM parts please insert part number 47001414 inside chassis;

**02**

- Please finger tight the bolts 45000037 / 45000042;

**03**

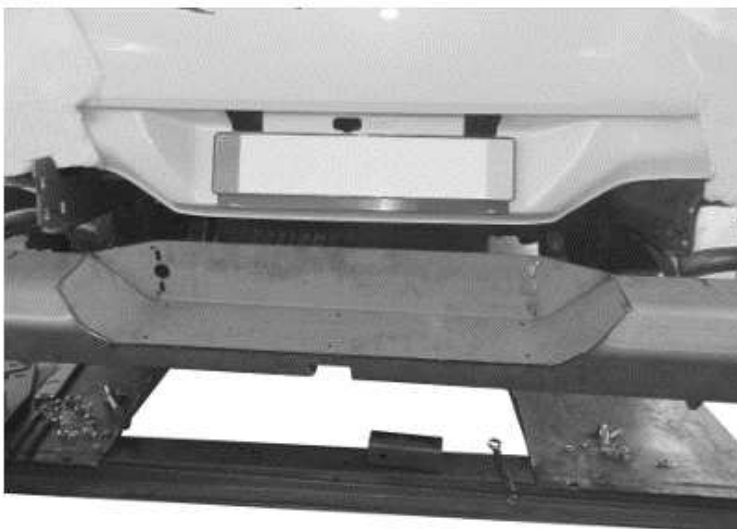
- Please insert part number 47001716 inside chassis;

**04**

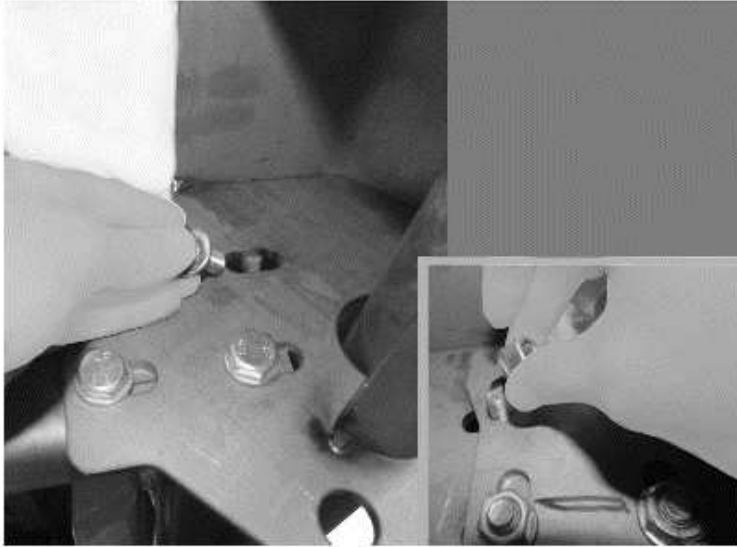
- Please finger tight the bolts  
45000037 / 45000042;

**05**

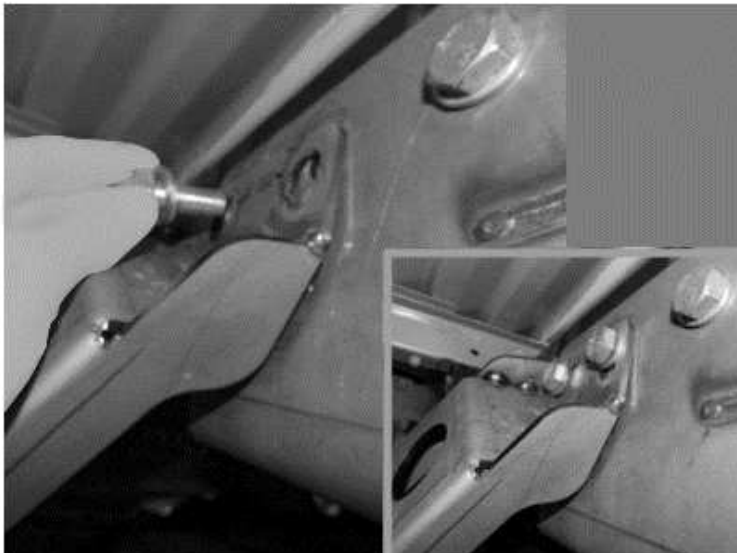
- Please fit part number 47001712

**06**

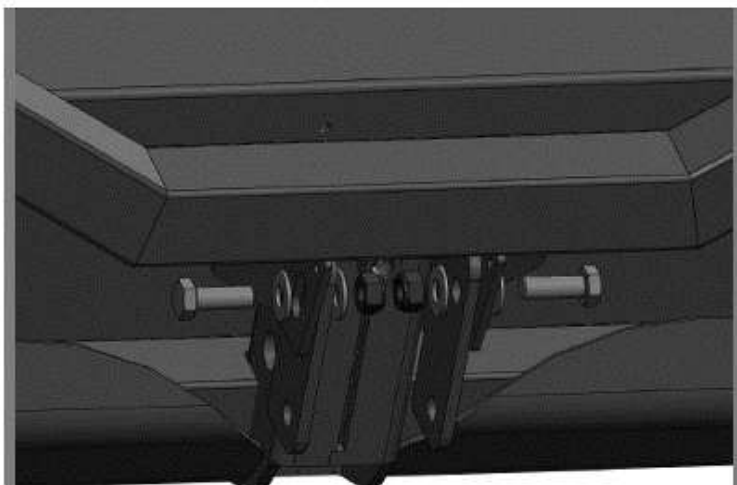
- Please fit part number  
47001709

**07**

- Please finger tight the bolts  
45000067 / 45000042 / 45000066

**08**

- Please finger tight the bolts  
45000067 / 45000042,

**09**

- Please finger tight the bolts  
45000007 / 45000039 / 45000017

**10**

- Make sure you leave enough gap between the body and the rear bumper;

-Once all bolts are in place give the final tight (use the table shown in the first page).